



[Go to Product page](#)

Datasheet for ABIN6140644
anti-FJX1 antibody (AA 138-437)

1 Image

Overview

Quantity:	100 µL
Target:	FJX1
Binding Specificity:	AA 138-437
Reactivity:	Human
Host:	Rabbit
Clonality:	Polyclonal
Conjugate:	This FJX1 antibody is un-conjugated
Application:	Western Blotting (WB)

Product Details

Immunogen:	Recombinant fusion protein containing a sequence corresponding to amino acids 138-437 of human FJX1 (NP_055159.2).
Sequence:	EAQAAWLEA ARGARMVALE RGGCGRSSNR LARFADGTRA CVRYGINPEQ IQGEALSYYL ARLLGLQRHV PPLALARVEA RGAQWAQVQE ELRAAHWTEG SVVSLTRWLP NLTDVVVPAP WRSEDGRLRP LRDAGGELAN LSQAELVDLV QWTDLILFDY LTANFDRLVS NLFSLQWDPR VMQRATSNLH RGPGGALVFL DNEAGLVHGY RVAGMWDKYN EPLLQSVCF RERTARRVLE LHRGQDAAAR LLRLYRRHEP RFPELAALAD PHAQLLQRR LDFLAKHILHC KAKYGRRSGT
Isotype:	IgG
Cross-Reactivity:	Human, Rat
Characteristics:	Polyclonal Antibodies
Purification:	Affinity purification

Target Details

Target: FJX1

Alternative Name: FJX1 ([FJX1 Products](#))

Background: The protein encoded by this gene is the human ortholog of mouse and Drosophila four-jointed gene product. The Drosophila protein is important for growth and differentiation of legs and wings, and for proper development of the eyes. The exact function of this gene in humans is not known.,FJX1,Neuroscience,Stem Cells,FJX1

Molecular Weight: 48 kDa

Gene ID: 24147

UniProt: [Q86VR8](#)

Application Details

Application Notes: WB,1:500 - 1:2000

Restrictions: For Research Use only

Handling

Format: Liquid

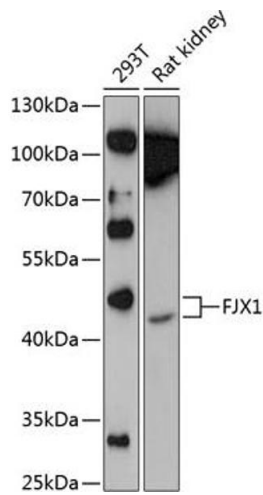
Buffer: PBS with 0.02 % sodium azide,50 % glycerol, pH 7.3.

Preservative: Sodium azide

Precaution of Use: This product contains Sodium azide: a POISONOUS AND HAZARDOUS SUBSTANCE which should be handled by trained staff only.

Storage: -20 °C

Storage Comment: Store at -20°C. Avoid freeze / thaw cycles.



Western Blotting

Image 1. Western blot analysis of extracts of various cell lines, using FJX1 Antibody (ABIN6132035, ABIN6140644, ABIN6140645 and ABIN6224952) at 1:1000 dilution. Secondary antibody: HRP Goat Anti-Rabbit IgG (H+L) (ABIN1684268 and ABIN3020597) at 1:10000 dilution. Lysates/proteins: 25 µg per lane. Blocking buffer: 3 % nonfat dry milk in TBST. Detection: ECL Enhanced Kit (RM00021). Exposure time: 90s.