



[Go to Product page](#)

Datasheet for ABIN6140646
anti-FKBP10 antibody (AA 303-582)

1 Image

Overview

Quantity:	100 µL
Target:	FKBP10
Binding Specificity:	AA 303-582
Reactivity:	Human
Host:	Rabbit
Clonality:	Polyclonal
Conjugate:	This FKBP10 antibody is un-conjugated
Application:	Western Blotting (WB)

Product Details

Immunogen:	Recombinant fusion protein containing a sequence corresponding to amino acids 303-582 of human FKBP10 (NP_068758.3).
Sequence:	FDSSYSRNHT YNTYIGQGYI IPGMDQGLQG ACMGERRRIT IPPHLAYGEN GTGDKIPGSA VLIFNVHVID FHNPAADVVEI RTLSPSETC NETTKLGDFV RYHYNCSLLD GTQLFTSHDY GAPQEATLGA NKVIEGLDTG LQGMCVGERR QLIVPPHLAH GESGARGVPG SAVLLFEVEL VSREDGLPTG YLFVWHKDP ANLFEDMDLN KDGEVPPPEEF STFIKAQVSE GKGRLMPGQD PEKTIGDMFQ NQDRNQDGKI TVDELKCLKSD EDEERVHEEL
Isotype:	IgG
Cross-Reactivity:	Human, Mouse
Characteristics:	Polyclonal Antibodies
Purification:	Affinity purification

Target Details

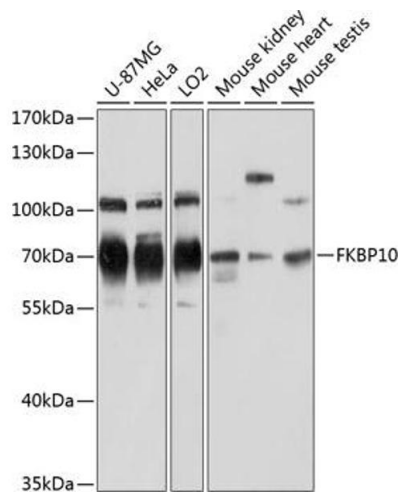
Target:	FKBP10
Alternative Name:	FKBP10 (FKBP10 Products)
Background:	The protein encoded by this gene belongs to the FKBP-type peptidyl-prolyl cis/trans isomerase (PPIase) family. This protein localizes to the endoplasmic reticulum and acts as a molecular chaperone. Alternatively spliced variants encoding different isoforms have been reported, but their biological validity has not been determined.,FKBP10,BRKS1,FKBP65,O111,O16,PPIASE,hFKBP65,Signal Transduction,FKBP10
Molecular Weight:	38 kDa/64 kDa
Gene ID:	60681
UniProt:	Q96AY3
Pathways:	SARS-CoV-2 Protein Interactome

Application Details

Application Notes:	WB,1:500 - 1:2000
Comment:	HIGH QUALITY
Restrictions:	For Research Use only

Handling

Format:	Liquid
Buffer:	PBS with 0.02 % sodium azide,50 % glycerol, pH 7.3.
Preservative:	Sodium azide
Precaution of Use:	This product contains Sodium azide: a POISONOUS AND HAZARDOUS SUBSTANCE which should be handled by trained staff only.
Storage:	-20 °C
Storage Comment:	Store at -20°C. Avoid freeze / thaw cycles.



Western Blotting

Image 1. Western blot analysis of extracts of various cell lines, using FKBP10 antibody at 1:3000 dilution. Secondary antibody: HRP Goat Anti-Rabbit IgG (H+L) (ABIN1684268 and ABIN3020597) at 1:10000 dilution. Lysates/proteins: 25 µg per lane. Blocking buffer: 3% nonfat dry milk in TBST. Detection: ECL Basic Kit (RM00020). Exposure time: 30s.