

Datasheet for ABIN6140656
anti-FKBP3 antibody (AA 1-224)

2 Images

[Go to Product page](#)

Overview

Quantity:	100 µL
Target:	FKBP3
Binding Specificity:	AA 1-224
Reactivity:	Human
Host:	Rabbit
Clonality:	Polyclonal
Conjugate:	This FKBP3 antibody is un-conjugated
Application:	Western Blotting (WB), Immunoprecipitation (IP)

Product Details

Immunogen:	Recombinant fusion protein containing a sequence corresponding to amino acids 1-224 of human FKBP3 (NP_002004.1).
Sequence:	MAAAVPQRAW TVEQLRSEQL PKKDIKFLQ EHGSDSFLAE HKLLGNIKNV AKTANKDHLV TAYNHLFETK RFKGTESISK VSEQVKNVKL NEDKPKETKS EETLDEGPPK YTKSVLKKGD KTNFPKKGDV VHCWYTGTLLQ DGTVFDTNIQ TSAKKKKNAK PLSFKVGVGK VIRGWDEALL TMSKGEKARL EIEPEWAYGK KGQPDAKIPP NAKLTFEVEL VDID
Isotype:	IgG
Cross-Reactivity:	Human
Characteristics:	Polyclonal Antibodies
Purification:	Affinity purification

Target Details

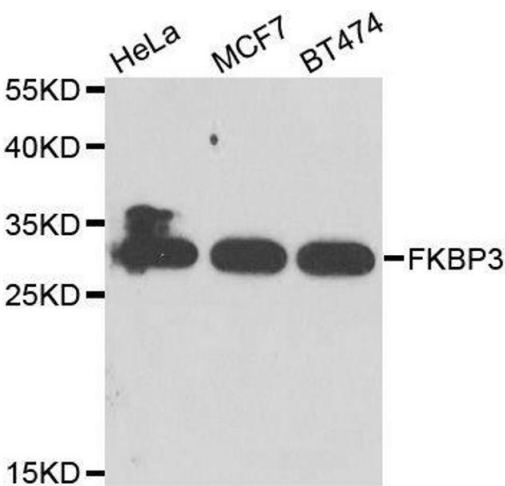
Target:	FKBP3
Alternative Name:	FKBP3 (FKBP3 Products)
Background:	<p>The protein encoded by this gene is a member of the immunophilin protein family, which play a role in immunoregulation and basic cellular processes involving protein folding and trafficking.</p> <p>This encoded protein is a cis-trans prolyl isomerase that binds the immunosuppressants FK506 and rapamycin, as well as histone deacetylases, the transcription factor YY1, casein kinase II, and nucleolin. It has a higher affinity for rapamycin than for FK506 and thus may be an important target molecule for immunosuppression by rapamycin.,FKBP3,FKBP-25,FKBP-3,FKBP25,PPIase,Epigenetics & Nuclear Signaling,RNA Binding,FKBP3</p>
Molecular Weight:	25 kDa
Gene ID:	2287
UniProt:	Q00688

Application Details

Application Notes:	WB,1:500 - 1:2000,IP,1:50 - 1:100
Comment:	HIGH QUALITY
Restrictions:	For Research Use only

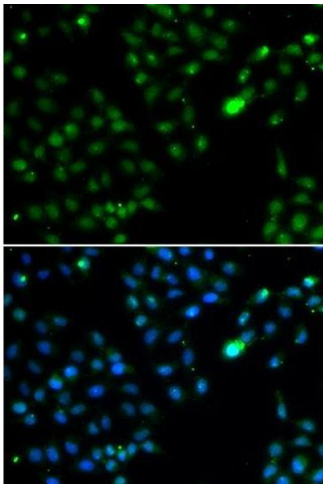
Handling

Format:	Liquid
Buffer:	PBS with 0.02 % sodium azide,50 % glycerol, pH 7.3.
Preservative:	Sodium azide
Precaution of Use:	This product contains Sodium azide: a POISONOUS AND HAZARDOUS SUBSTANCE which should be handled by trained staff only.
Storage:	-20 °C
Storage Comment:	Store at -20°C. Avoid freeze / thaw cycles.



Western Blotting

Image 1. Western blot analysis of extracts of various cell lines, using FKBP3 antibody.



Immunofluorescence

Image 2. Immunofluorescence analysis of HeLa cells using FKBP3 antibody.