

Datasheet for ABIN6140662
anti-FKBP8 antibody (AA 60-270)



[Go to Product page](#)

3 Images

Overview

Quantity:	100 µL
Target:	FKBP8
Binding Specificity:	AA 60-270
Reactivity:	Human
Host:	Rabbit
Clonality:	Polyclonal
Conjugate:	This FKBP8 antibody is un-conjugated
Application:	Western Blotting (WB), Immunoprecipitation (IP), Immunofluorescence (IF)

Product Details

Immunogen:	Recombinant fusion protein containing a sequence corresponding to amino acids 60-270 of human FKBP38/FKBP38/FKBP8 (NP_036313.3).
Sequence:	QPPAEEAEQP GALAREFLAA MEPEPAPAPA PEEWLDILGN GLLRKKTLVP GPPGSSRPVK GQVVTVHLQT SLENGTRVQE EPELVFTLGD CDVIQALDLS VPLMDVGETA MVTADSKYCY GPQGSRSPIY PPHAALCLEV TLKTAVDGPD LEMLTGQERV ALANRKRECG NAHYQRADFV LAANSYDLAI KAITSSAKVD MTFEEEAQLL Q
Isotype:	IgG
Cross-Reactivity:	Human, Mouse, Rat
Characteristics:	Polyclonal Antibodies
Purification:	Affinity purification

Target Details

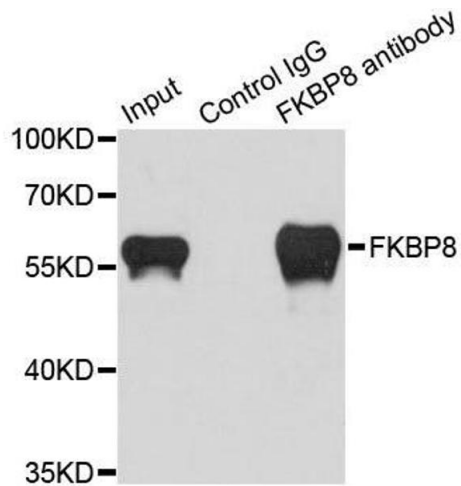
Target:	FKBP8
Alternative Name:	FKBP8 (FKBP8 Products)
Background:	<p>The protein encoded by this gene is a member of the immunophilin protein family, which play a role in immunoregulation and basic cellular processes involving protein folding and trafficking. Unlike the other members of the family, this encoded protein does not seem to have PPlase/rotamase activity. It may have a role in neurons associated with memory function.,FKBP8,FKBP38,FKBPr38,Epigenetics & Nuclear Signaling,Signal Transduction,Cell Biology & Developmental Biology,Apoptosis,Neuroscience,Calcium Signaling,FKBP8</p>
Molecular Weight:	27 kDa/44 kDa
Gene ID:	23770
UniProt:	Q14318
Pathways:	Autophagy

Application Details

Application Notes:	WB,1:500 - 1:2000,IF,1:50 - 1:100,IP,1:50 - 1:200
Comment:	HIGH QUALITY
Restrictions:	For Research Use only

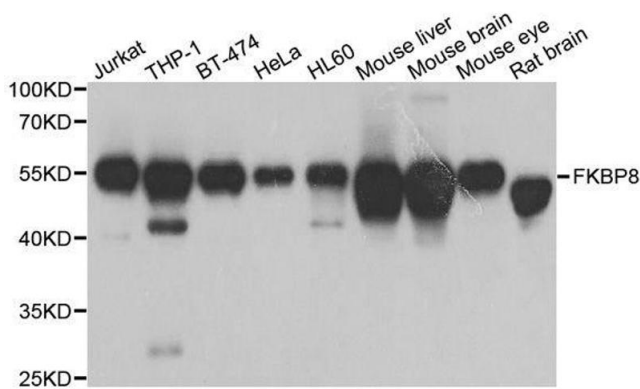
Handling

Format:	Liquid
Buffer:	PBS with 0.02 % sodium azide,50 % glycerol, pH 7.3.
Preservative:	Sodium azide
Precaution of Use:	This product contains Sodium azide: a POISONOUS AND HAZARDOUS SUBSTANCE which should be handled by trained staff only.
Storage:	-20 °C
Storage Comment:	Store at -20°C. Avoid freeze / thaw cycles.



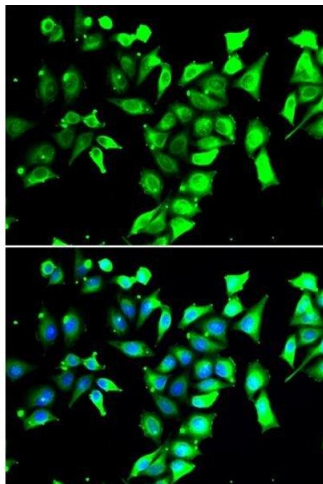
Immunoprecipitation

Image 1. Immunoprecipitation analysis of 200ug extracts of HeLa cells using 1ug FKBP8 antibody.



Western Blotting

Image 2. Western blot analysis of extracts of various cell lines, using FKBP8 antibody.



Immunofluorescence

Image 3. Immunofluorescence analysis of A549 cells using FKBP8 antibody.