



[Go to Product page](#)

Datasheet for ABIN6140675
anti-CPSF7 antibody (AA 50-240)

1 Image

Overview

Quantity:	100 µL
Target:	CPSF7
Binding Specificity:	AA 50-240
Reactivity:	Human
Host:	Rabbit
Clonality:	Polyclonal
Conjugate:	This CPSF7 antibody is un-conjugated
Application:	Western Blotting (WB)

Product Details

Immunogen:	Recombinant fusion protein containing a sequence corresponding to amino acids 50-240 of human FLJ12529 (NP_079087.3).
Sequence:	LIDIYADEEF NQDPEFNNTD QIDLYDDVLT ATSQPSDDRS SSTEPPPPVR QEPSPKPNNK TPAILYTYSG LRNRRAAVYV GSFSWWTTDQ QLIQVIRSIG VYDVVELKFA ENRANGQSKG YAEVVASEN SVHKLELLLP GKVLNGEKVD VRPATRQNLQ QFEAQARKRE CVRVPRGGIP PRAHSRDSSD S
Isotype:	IgG
Cross-Reactivity:	Human, Mouse
Characteristics:	Polyclonal Antibodies
Purification:	Affinity purification

Target Details

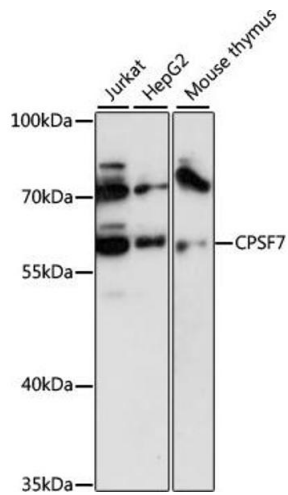
Target:	CPSF7
Alternative Name:	CPSF7 (CPSF7 Products)
Background:	Cleavage factor Im (CFIm) is one of six factors necessary for correct cleavage and polyadenylation of pre-mRNAs. CFIm is composed of three different subunits of 25, 59, and 68 kDa, and it functions as a heterotetramer, with a dimer of the 25 kDa subunit binding to two of the 59 or 68 kDa subunits. The protein encoded by this gene represents the 59 kDa subunit, which can interact with the splicing factor U2 snRNP Auxiliary Factor (U2AF) 65 to link the splicing and polyadenylation complexes.,CPSF7,CFIm59,FLJ12529,Epigenetics & Nuclear Signaling,CPSF7
Molecular Weight:	51 kDa/52 kDa/56 kDa
Gene ID:	79869
UniProt:	Q8N684

Application Details

Application Notes:	WB,1:500 - 1:2000
Restrictions:	For Research Use only

Handling

Format:	Liquid
Buffer:	PBS with 0.02 % sodium azide,50 % glycerol, pH 7.3.
Preservative:	Sodium azide
Precaution of Use:	This product contains Sodium azide: a POISONOUS AND HAZARDOUS SUBSTANCE which should be handled by trained staff only.
Storage:	-20 °C
Storage Comment:	Store at -20°C. Avoid freeze / thaw cycles.



Western Blotting

Image 1. Western blot analysis of extracts of various cell lines, using CPSF7 antibody (ABIN6131022, ABIN6140675, ABIN6140676 and ABIN6218037) at 1:3000 dilution. Secondary antibody: HRP Goat Anti-Rabbit IgG (H+L) (ABIN1684268 and ABIN3020597) at 1:10000 dilution. Lysates/proteins: 25 µg per lane. Blocking buffer: 3 % nonfat dry milk in TBST. Detection: ECL Basic Kit (RM00020). Exposure time: 10s.