



Datasheet for ABIN6140691
anti-FLT3 antibody (AA 650-750)



[Go to Product page](#)

3 Images

Overview

Quantity:	100 µL
Target:	FLT3
Binding Specificity:	AA 650-750
Reactivity:	Human
Host:	Rabbit
Clonality:	Polyclonal
Conjugate:	This FLT3 antibody is un-conjugated
Application:	Western Blotting (WB), Immunohistochemistry (IHC)

Product Details

Immunogen:	A synthetic peptide corresponding to a sequence within amino acids 650-750 of human FLT3 (NP_004110.2).
Sequence:	ADSSEREALM SELKMMTQLG SHENIVNLLG ACTLSGPIYL IFEYCCYGDL LNYLRSKREK FHRTWTEIFK EHNFSFYPTF QSHPNSSMPG SREVQIHPDS D
Isotype:	IgG
Cross-Reactivity:	Human, Mouse, Rat
Characteristics:	Polyclonal Antibodies
Purification:	Affinity purification

Target Details

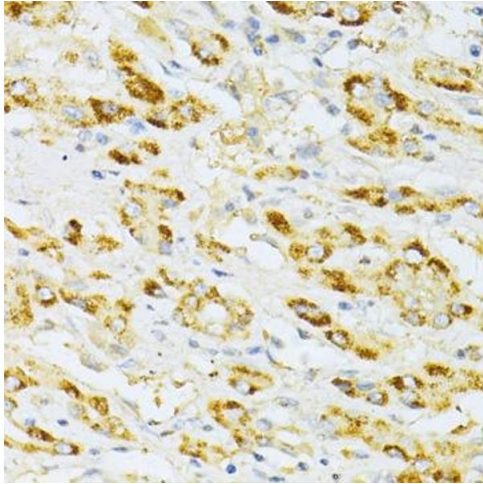
Target:	FLT3
Alternative Name:	FLT3 (FLT3 Products)
Background:	<p>This gene encodes a class III receptor tyrosine kinase that regulates hematopoiesis. This receptor is activated by binding of the fms-related tyrosine kinase 3 ligand to the extracellular domain, which induces homodimer formation in the plasma membrane leading to autophosphorylation of the receptor. The activated receptor kinase subsequently phosphorylates and activates multiple cytoplasmic effector molecules in pathways involved in apoptosis, proliferation, and differentiation of hematopoietic cells in bone marrow. Mutations that result in the constitutive activation of this receptor result in acute myeloid leukemia and acute lymphoblastic leukemia.,FLT3,CD135,FLK-2,FLK2,STK1,Signal Transduction,Kinase,Tyrosine kinases,Immunology & Inflammation,CD markers,Stem Cells,FLT3</p>
Molecular Weight:	108 kDa/112 kDa
Gene ID:	2322
UniProt:	P36888
Pathways:	RTK Signaling

Application Details

Application Notes:	WB,1:500 - 1:2000,IHC,1:50 - 1:200
Comment:	HIGH QUALITY
Restrictions:	For Research Use only

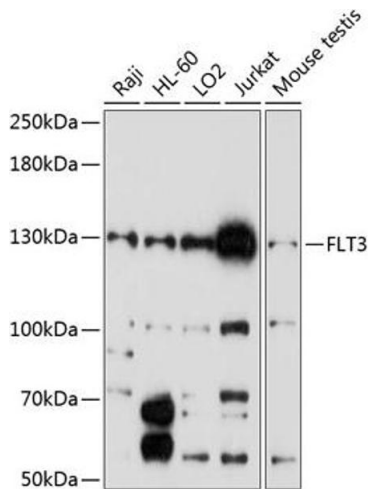
Handling

Format:	Liquid
Buffer:	PBS with 0.02 % sodium azide,50 % glycerol, pH 7.3.
Preservative:	Sodium azide
Precaution of Use:	This product contains Sodium azide: a POISONOUS AND HAZARDOUS SUBSTANCE which should be handled by trained staff only.
Storage:	-20 °C
Storage Comment:	Store at -20°C. Avoid freeze / thaw cycles.



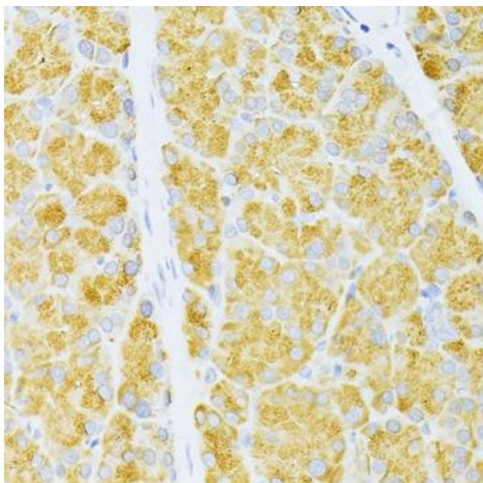
Immunohistochemistry

Image 1. Immunohistochemistry of paraffin-embedded human liver cancer using FLT3 antibody (ABIN6134576, ABIN6140691, ABIN6140694 and ABIN6216061) at dilution of 1:100 (40x lens). Perform microwave antigen retrieval with 10 mM PBS buffer pH 7.2 before commencing with IHC staining protocol.



Western Blotting

Image 2. Western blot analysis of extracts of various cell lines, using FLT3 antibody (ABIN6134576, ABIN6140691, ABIN6140694 and ABIN6216061) at 1:1000 dilution. Secondary antibody: HRP Goat Anti-Rabbit IgG (H+L) (ABIN1684268 and ABIN3020597) at 1:10000 dilution. Lysates/proteins: 25 µg per lane. Blocking buffer: 3 % nonfat dry milk in TBST. Detection: ECL Enhanced Kit (RM00021). Exposure time: 60s.



Immunohistochemistry

Image 3. Immunohistochemistry of paraffin-embedded rat pancreas using FLT3 antibody (ABIN6134576, ABIN6140691, ABIN6140694 and ABIN6216061) at dilution of 1:100 (40x lens). Perform microwave antigen retrieval with 10 mM PBS buffer pH 7.2 before commencing with IHC staining protocol.