

Datasheet for ABIN6140738
anti-FOSL1 antibody (AA 1-100)



[Go to Product page](#)

6 Images

Overview

Quantity:	100 µL
Target:	FOSL1
Binding Specificity:	AA 1-100
Reactivity:	Human
Host:	Rabbit
Clonality:	Polyclonal
Conjugate:	This FOSL1 antibody is un-conjugated
Application:	Western Blotting (WB), Immunohistochemistry (IHC), Immunofluorescence (IF)

Product Details

Immunogen:	Recombinant fusion protein containing a sequence corresponding to amino acids 1-100 of human FOSL1 (NP_005429.1).
Sequence:	MFRDFGEPGP SSGNGGGYGG PAQPPAAAQA AQQKFHLVPS INTMSGSQEL QWMVQPHFLG PSSYPRPLTY PQYSPPQPRP GVIRALGPPP GVRRRPCEQI
Isotype:	IgG
Cross-Reactivity:	Human, Mouse, Rat
Characteristics:	Polyclonal Antibodies
Purification:	Affinity purification

Target Details

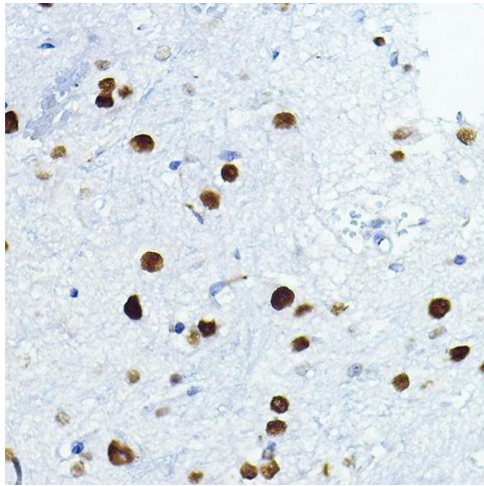
Target:	FOSL1
Alternative Name:	FOSL1 (FOSL1 Products)
Background:	The Fos gene family consists of 4 members: FOS, FOSB, FOSL1, and FOSL2. These genes encode leucine zipper proteins that can dimerize with proteins of the JUN family, thereby forming the transcription factor complex AP-1. As such, the FOS proteins have been implicated as regulators of cell proliferation, differentiation, and transformation. Several transcript variants encoding different isoforms have been found for this gene.,FOSL1,FRA,FRA1,fra-1,Epigenetics & Nuclear Signaling,Transcription Factors,FOSL1
Molecular Weight:	17 kDa/29 kDa
Gene ID:	8061
UniProt:	P15407

Application Details

Application Notes:	WB,1:500 - 1:2000,IHC,1:50 - 1:200,IF,1:50 - 1:100
Restrictions:	For Research Use only

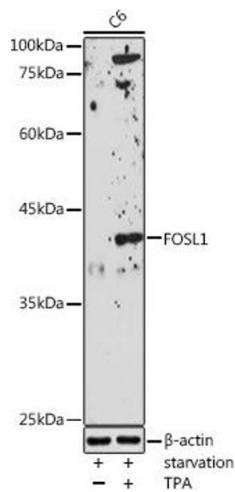
Handling

Format:	Liquid
Buffer:	PBS with 0.02 % sodium azide,50 % glycerol, pH 7.3.
Preservative:	Sodium azide
Precaution of Use:	This product contains Sodium azide: a POISONOUS AND HAZARDOUS SUBSTANCE which should be handled by trained staff only.
Storage:	-20 °C
Storage Comment:	Store at -20°C. Avoid freeze / thaw cycles.



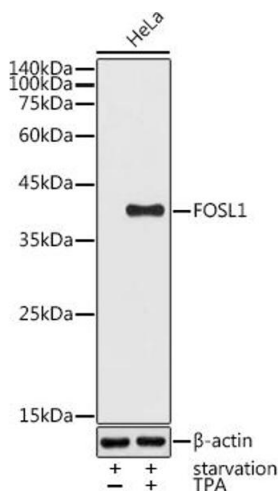
Immunohistochemistry

Image 1. Immunohistochemistry of paraffin-embedded mouse spinal cord using FOSL1 Rabbit pAb (ABIN6131653, ABIN6140738, ABIN6140739 and ABIN6221016) at dilution of 1:100 (40x lens). Perform high pressure antigen retrieval with 10 mM citrate buffer pH 6.0 before commencing with IHC staining protocol.



Western Blotting

Image 2. Western blot analysis of extracts of C6 cells, using FOSL1 antibody (ABIN6131653, ABIN6140738, ABIN6140739 and ABIN6221016) at 1:1000 dilution. C6 cells were treated by PMA/TPA (200 nM) at 37 °C for 15 minutes after serum-starvation overnight. Secondary antibody: HRP Goat Anti-Rabbit IgG (H+L) (ABIN1684268 and ABIN3020597) at 1:10000 dilution. Lysates/proteins: 25 µg per lane. Blocking buffer: 3 % nonfat dry milk in TBST. Detection: ECL Enhanced Kit (RM00021). Exposure time: 180s.



Western Blotting

Image 3. Western blot analysis of extracts of HeLa cells, using FOSL1 antibody (ABIN6131653, ABIN6140738, ABIN6140739 and ABIN6221016) at 1:1000 dilution. HeLa cells were treated by PMA/TPA (200 nM) at 37 °C for 15 minutes after serum-starvation overnight. Secondary antibody: HRP Goat Anti-Rabbit IgG (H+L) (ABIN1684268 and ABIN3020597) at 1:10000 dilution. Lysates/proteins: 25 µg per lane. Blocking buffer: 3 % nonfat dry milk in TBST. Detection: ECL Basic Kit (RM00020). Exposure time: 90s.

Please check the [product details page](#) for more images. Overall 6 images are available for ABIN6140738.