

Datasheet for ABIN6140865
anti-GAA antibody (AA 350-450)[Go to Product page](#)

1 Image

Overview

Quantity:	100 µL
Target:	GAA
Binding Specificity:	AA 350-450
Reactivity:	Human
Host:	Rabbit
Clonality:	Polyclonal
Conjugate:	This GAA antibody is un-conjugated
Application:	Western Blotting (WB), Immunoprecipitation (IP), Immunofluorescence (IF)

Product Details

Immunogen:	A synthetic peptide corresponding to a sequence within amino acids 350-450 of human GAA (NP_000143.2).
Sequence:	VVQQYLDVVG YPFMPPYWGL GFHLCRWGYS STAITRQVVE NMTRAHFPLD VQWNDLDYMD SRRDFTFNKD GFRDFPAMVQ ELHQGGRRYM MIVDPAISSS G
Isotype:	IgG
Cross-Reactivity:	Human, Mouse, Rat
Characteristics:	Polyclonal Antibodies
Purification:	Affinity purification

Target Details

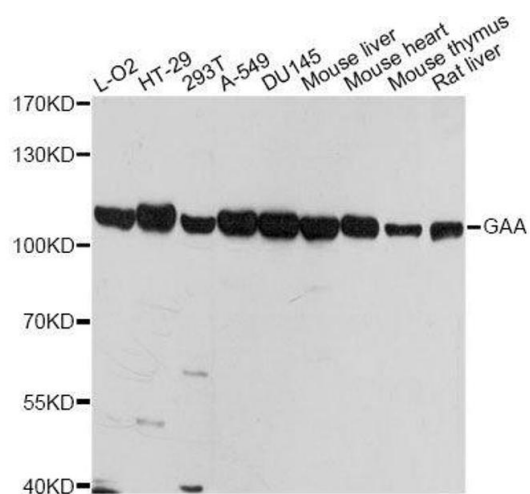
Target:	GAA
Alternative Name:	GAA (GAA Products)
Background:	This gene encodes lysosomal alpha-glucosidase, which is essential for the degradation of glycogen to glucose in lysosomes. The encoded preproprotein is proteolytically processed to generate multiple intermediate forms and the mature form of the enzyme. Defects in this gene are the cause of glycogen storage disease II, also known as Pompe's disease, which is an autosomal recessive disorder with a broad clinical spectrum. Alternative splicing results in multiple transcript variants.,GAA,LYAG,Cancer,Signal Transduction,Endocrine & Metabolism,GAA
Molecular Weight:	105 kDa
Gene ID:	2548
UniProt:	P10253
Pathways:	Cellular Glucan Metabolic Process

Application Details

Application Notes:	WB,1:500 - 1:2000,IF,1:50 - 1:200,IP,1:50 - 1:200
Comment:	HIGH QUALITY
Restrictions:	For Research Use only

Handling

Format:	Liquid
Buffer:	PBS with 0.02 % sodium azide,50 % glycerol, pH 7.3.
Preservative:	Sodium azide
Precaution of Use:	This product contains Sodium azide: a POISONOUS AND HAZARDOUS SUBSTANCE which should be handled by trained staff only.
Storage:	-20 °C
Storage Comment:	Store at -20°C. Avoid freeze / thaw cycles.



Western Blotting

Image 1. Western blot analysis of extracts of various cell lines, using GAA antibody.