



[Go to Product page](#)

Datasheet for ABIN6140903
anti-GABRA3 antibody (AA 29-276)

1 Image

Overview

Quantity:	100 µL
Target:	GABRA3
Binding Specificity:	AA 29-276
Reactivity:	Human
Host:	Rabbit
Clonality:	Polyclonal
Conjugate:	This GABRA3 antibody is un-conjugated
Application:	Western Blotting (WB)

Product Details

Immunogen:	Recombinant fusion protein containing a sequence corresponding to amino acids 29-276 of human GABRA3 (NP_000799.1).
Sequence:	QGESRRQEPG DFVKQDIGGL SPKHAPDIPD DSTDNITIFT RILDRLLDGY DNRLRPGLGD AVTEVKTDIY VTSFGPVSDT DMEYTI DVFF RQTWHERLK FDGPMKILPL NNLLASKIWT PDTFFHNGKK SVAHNMTTPN KLLRLVDNGT LLYTMRLTIH AECPMHLEDF PMDVHACPLK FGSYAYTTAE VVYSWTLGKN KSVEVAQDGS RLNQYDLLGH VVGTEIIRSS TGEYVVMTHH FHLKRKIG
Isotype:	IgG
Cross-Reactivity:	Human, Mouse, Rat
Characteristics:	Polyclonal Antibodies
Purification:	Affinity purification

Target Details

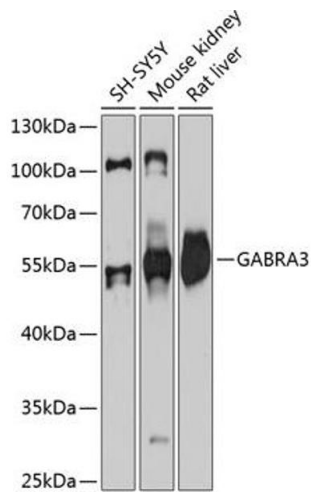
Target:	GABRA3
Alternative Name:	GABRA3 (GABRA3 Products)
Background:	<p>GABA is the major inhibitory neurotransmitter in the mammalian brain where it acts at GABA-A receptors, which are ligand-gated chloride channels. Chloride conductance of these channels can be modulated by agents such as benzodiazepines that bind to the GABA-A receptor. At least 16 distinct subunits of GABA-A receptors have been identified.,GABRA3,Neuroscience,GABRA3</p>
Molecular Weight:	55 kDa
Gene ID:	2556
UniProt:	P34903

Application Details

Application Notes:	WB,1:500 - 1:2000
Comment:	HIGH QUALITY
Restrictions:	For Research Use only

Handling

Format:	Liquid
Buffer:	PBS with 0.02 % sodium azide,50 % glycerol, pH 7.3.
Preservative:	Sodium azide
Precaution of Use:	This product contains Sodium azide: a POISONOUS AND HAZARDOUS SUBSTANCE which should be handled by trained staff only.
Storage:	-20 °C
Storage Comment:	Store at -20°C. Avoid freeze / thaw cycles.



Western Blotting

Image 1. Western blot analysis of extracts of various cell lines, using G antibody (ABIN6131687, ABIN6140903, ABIN6140906 and ABIN6215329) at 1:3000 dilution. Secondary antibody: HRP Goat Anti-Rabbit IgG (H+L) (ABIN1684268 and ABIN3020597) at 1:10000 dilution. Lysates/proteins: 25 μ g per lane. Blocking buffer: 3% nonfat dry milk in TBST. Detection: ECL Basic Kit (RM00020). Exposure time: 30s.