



[Go to Product page](#)

Datasheet for ABIN6140910  
**anti-GABRA5 antibody (AA 32-259)**

1 Image

Overview

Quantity:	100 µL
Target:	GABRA5
Binding Specificity:	AA 32-259
Reactivity:	Human
Host:	Rabbit
Clonality:	Polyclonal
Conjugate:	This GABRA5 antibody is un-conjugated
Application:	Western Blotting (WB)

Product Details

Immunogen:	Recombinant fusion protein containing a sequence corresponding to amino acids 32-259 of human GABRA5 (NP_000801.1).
Sequence:	QMPTSSVKDE TNDNITIFTR ILDGLLDGYD NRLRPGLGER ITQVRTDIYV TSFGPVS DTE MEYTIDVFFR QSWKDERLRF KGPMQRLPLN NLLASKIWTP DTFHNGKKS IAHNM TTPNK LLRLEDDGTL LYTMRLTISA ECPMQLED FP MDAHACPLKF GSYAYPNSEV VYVWTNGSTK SVVVAEDGSR LNQYHLMGQT VGTENISTST GEYTIMTAHF HLK RKIGY
Isotype:	IgG
Cross-Reactivity:	Mouse, Rat
Characteristics:	Polyclonal Antibodies
Purification:	Affinity purification

## Target Details

---

Target:	GABRA5
Alternative Name:	GABRA5 ( <a href="#">GABRA5 Products</a> )
Background:	<p>GABA is the major inhibitory neurotransmitter in the mammalian brain where it acts at GABA-A receptors, which are ligand-gated chloride channels. Chloride conductance of these channels can be modulated by agents such as benzodiazepines that bind to the GABA-A receptor. At least 16 distinct subunits of GABA-A receptors have been identified. Transcript variants utilizing three different alternative non-coding first exons have been described.,GABRA5,Neuroscience,GABRA5</p>
Molecular Weight:	52 kDa
Gene ID:	2558
UniProt:	<a href="#">P31644</a>
Pathways:	<a href="#">Sensory Perception of Sound</a> , <a href="#">Synaptic Membrane</a>

## Application Details

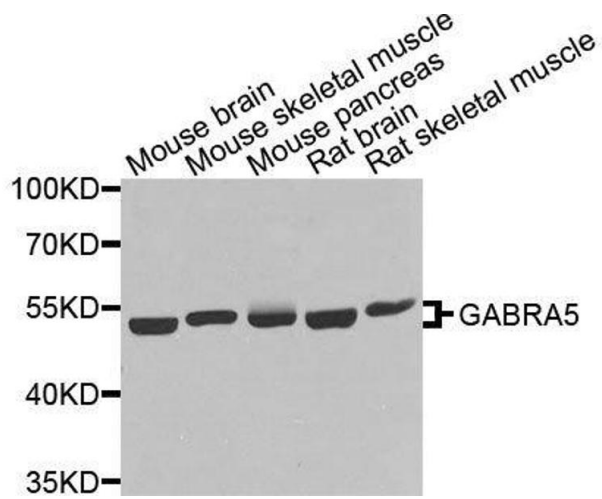
---

Application Notes:	WB,1:1000 - 1:4000
Comment:	HIGH QUALITY
Restrictions:	For Research Use only

## Handling

---

Format:	Liquid
Buffer:	PBS with 0.02 % sodium azide,50 % glycerol, pH 7.3.
Preservative:	Sodium azide
Precaution of Use:	This product contains Sodium azide: a POISONOUS AND HAZARDOUS SUBSTANCE which should be handled by trained staff only.
Storage:	-20 °C
Storage Comment:	Store at -20°C. Avoid freeze / thaw cycles.



### Western Blotting

**Image 1.** Western blot analysis of extracts of various cell lines, using GABRA5 antibody.