

Datasheet for ABIN6140967  
**anti-GAS6 antibody (AA 100-300)**



[Go to Product page](#)

2 Images

## Overview

Quantity:	100 µL
Target:	GAS6
Binding Specificity:	AA 100-300
Reactivity:	Human
Host:	Rabbit
Clonality:	Polyclonal
Conjugate:	This GAS6 antibody is un-conjugated
Application:	Western Blotting (WB), Immunohistochemistry (IHC)

## Product Details

Immunogen:	Recombinant fusion protein containing a sequence corresponding to amino acids 100-300 of human GAS6 (NP_000811.1).
Sequence:	GSPYTKNSGF ATCVQNLPDQ CTPNPCDRKG TQACQDLMGN FFCLCKAGWG GRLCDKDVNE CSQENGGCLQ ICHNKPGSFH CSCHSGFELS SDGRTCQDID ECADSEACGE ARCKNLPGSY SCLCDEGFAY SSQEKACRDV DECLQGRCEQ VCVNSPGSYT CHCDGRGGLK LSQDMDTCED ILPCVPFSVA KSVKSLYLGR M
Isotype:	IgG
Cross-Reactivity:	Human, Mouse
Characteristics:	Polyclonal Antibodies
Purification:	Affinity purification

## Target Details

---

Target:	GAS6
Alternative Name:	GAS6 ( <a href="#">GAS6 Products</a> )
Background:	This gene encodes a gamma-carboxyglutamic acid (Gla)-containing protein thought to be involved in the stimulation of cell proliferation. This gene is frequently overexpressed in many cancers and has been implicated as an adverse prognostic marker. Elevated protein levels are additionally associated with a variety of disease states, including venous thromboembolic disease, systemic lupus erythematosus, chronic renal failure, and preeclampsia.,GAS6,AXLLG,AXSF,Signal Transduction,Kinase,Tyrosine kinases,Stem Cells,Hematopoietic Progenitors,Mesenchymal Stem Cells,Cardiovascular,GAS6
Molecular Weight:	41 kDa/44 kDa/68 kDa/74 kDa/79 kDa
Gene ID:	2621
UniProt:	<a href="#">Q14393</a>
Pathways:	<a href="#">RTK Signaling</a> , <a href="#">Carbohydrate Homeostasis</a> , <a href="#">Production of Molecular Mediator of Immune Response</a>

## Application Details

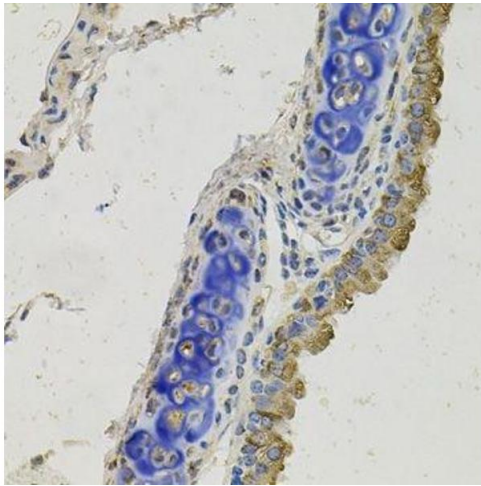
---

Application Notes:	WB,1:500 - 1:2000,IHC,1:50 - 1:100
Comment:	HIGH QUALITY
Restrictions:	For Research Use only

## Handling

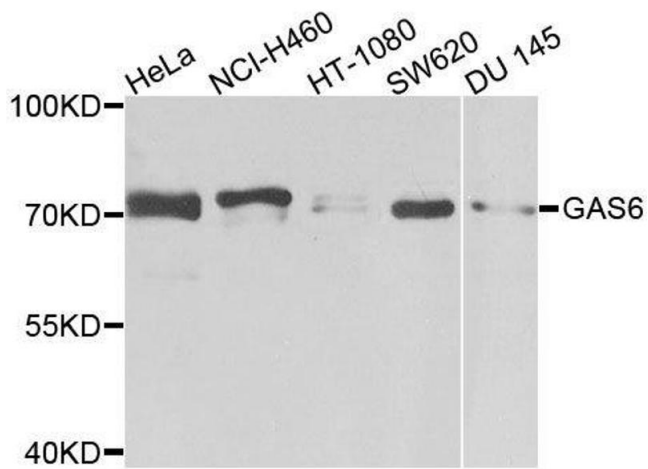
---

Format:	Liquid
Buffer:	PBS with 0.02 % sodium azide,50 % glycerol, pH 7.3.
Preservative:	Sodium azide
Precaution of Use:	This product contains Sodium azide: a POISONOUS AND HAZARDOUS SUBSTANCE which should be handled by trained staff only.
Storage:	-20 °C
Storage Comment:	Store at -20°C. Avoid freeze / thaw cycles.



### Immunohistochemistry (Paraffin-embedded Sections)

**Image 1.** Immunohistochemistry of paraffin-embedded mouse lung using GAS6 antibody.



### Western Blotting

**Image 2.** Western blot analysis of extracts of various cell lines, using GAS6 antibody.