



Datasheet for ABIN6140975
anti-GATA4 antibody (AA 50-150)



[Go to Product page](#)

5 Images

Overview

Quantity:	100 µL
Target:	GATA4
Binding Specificity:	AA 50-150
Reactivity:	Human
Host:	Rabbit
Clonality:	Polyclonal
Conjugate:	This GATA4 antibody is un-conjugated
Application:	Western Blotting (WB), Immunohistochemistry (IHC), Immunofluorescence (IF)

Product Details

Immunogen:	A synthetic peptide corresponding to a sequence within amino acids 50-150 of human GATA4 (NP_002043.2).
Sequence:	GLSYLQGGGA GSASGGASGG SSGGAASGAG PGTQQGSPGW SQAGADGAAY TPPPVSFRFS FPGTTGSLAA AAAAAAAREA AAYSSGGGAA GAGLAGREQY G
Isotype:	IgG
Cross-Reactivity:	Human, Mouse, Rat
Characteristics:	Polyclonal Antibodies
Purification:	Affinity purification

Target Details

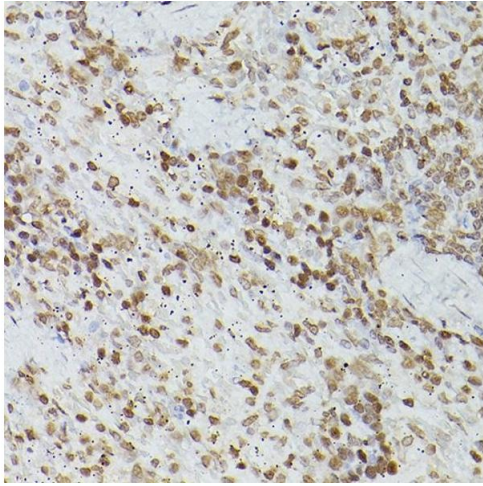
Target:	GATA4
Alternative Name:	GATA4 (GATA4 Products)
Background:	<p>This gene encodes a member of the GATA family of zinc-finger transcription factors. Members of this family recognize the GATA motif which is present in the promoters of many genes. This protein is thought to regulate genes involved in embryogenesis and in myocardial differentiation and function, and is necessary for normal testicular development. Mutations in this gene have been associated with cardiac septal defects. Additionally, alterations in gene expression have been associated with several cancer types. Alternative splicing results in multiple transcript variants.,GATA4,ASD2,TACHD,TOF,VSD1,Epigenetics & Nuclear Signaling,Transcription Factors,Cancer,Tumor suppressors,Cell Biology & Developmental Biology,Stem Cells,Mesenchymal Stem Cells,Cardiovascular,Cardiovascular Markers,Cardiomyocytes,Heart,Hypertrophy,GATA4</p>
Molecular Weight:	44 kDa
Gene ID:	2626
UniProt:	P43694
Pathways:	Peptide Hormone Metabolism , Carbohydrate Homeostasis

Application Details

Application Notes:	WB,1:500 - 1:2000,IHC,1:50 - 1:200,IF,1:50 - 1:200
Restrictions:	For Research Use only

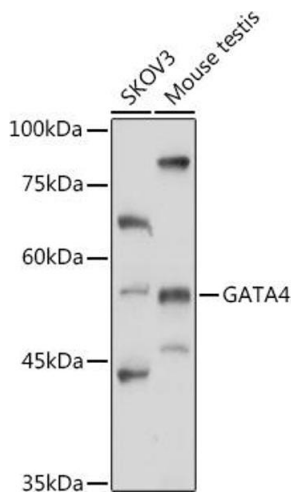
Handling

Format:	Liquid
Buffer:	PBS with 0.02 % sodium azide,50 % glycerol, pH 7.3.
Preservative:	Sodium azide
Precaution of Use:	This product contains Sodium azide: a POISONOUS AND HAZARDOUS SUBSTANCE which should be handled by trained staff only.
Storage:	-20 °C
Storage Comment:	Store at -20°C. Avoid freeze / thaw cycles.



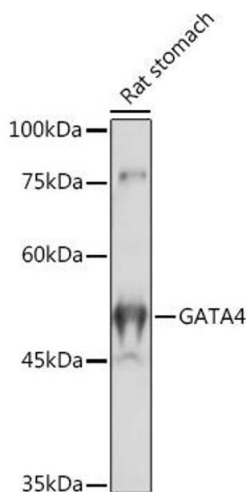
Immunohistochemistry

Image 1. Immunohistochemistry of paraffin-embedded rat spleen using G antibody (ABIN6133721, ABIN6140975, ABIN6140976 and ABIN6217864) at dilution of 1:150 (40x lens). Perform high pressure antigen retrieval with 10 mM citrate buffer pH 6.0 before commencing with IHC staining protocol.



Western Blotting

Image 2. Western blot analysis of extracts of various cell lines, using G antibody (ABIN6133721, ABIN6140975, ABIN6140976 and ABIN6217864) at 1:1000 dilution. Secondary antibody: HRP Goat Anti-Rabbit IgG (H+L) (ABIN1684268 and ABIN3020597) at 1:10000 dilution. Lysates/proteins: 25 µg per lane. Blocking buffer: 3 % nonfat dry milk in TBST. Detection: ECL Basic Kit (RM00020). Exposure time: 60s.



Western Blotting

Image 3. Western blot analysis of extracts of Rat stomach, using G antibody (ABIN6133721, ABIN6140975, ABIN6140976 and ABIN6217864) at 1:1000 dilution. Secondary antibody: HRP Goat Anti-Rabbit IgG (H+L) (ABIN1684268 and ABIN3020597) at 1:10000 dilution. Lysates/proteins: 25 µg per lane. Blocking buffer: 3 % nonfat dry milk in TBST. Detection: ECL Basic Kit (RM00020). Exposure time: 180s.

Please check the [product details page](#) for more images. Overall 5 images are available for ABIN6140975.