

Datasheet for ABIN6140994
anti-GBF1 antibody (AA 1-85)[Go to Product page](#)

1 Image

Overview

Quantity:	100 µL
Target:	GBF1
Binding Specificity:	AA 1-85
Reactivity:	Human
Host:	Rabbit
Clonality:	Polyclonal
Conjugate:	This GBF1 antibody is un-conjugated
Application:	Western Blotting (WB)

Product Details

Immunogen:	Recombinant fusion protein containing a sequence corresponding to amino acids 1-85 of human GBF1 (NP_004184.1).
Sequence:	MVDKNIYIIQ GEINIVVGAI KRNARWSTHT PLDEERDPLL HSFGLHKEVL NSITELSEIE PNVFLRPFLE VIRSEDTTGP ITGLA
Isotype:	IgG
Cross-Reactivity:	Human, Mouse
Characteristics:	Polyclonal Antibodies
Purification:	Affinity purification

Target Details

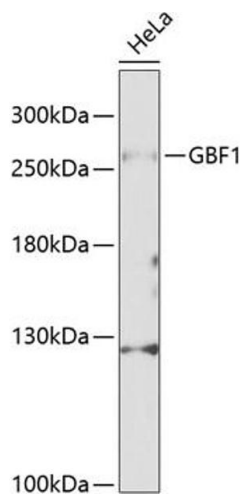
Target:	GBF1
Alternative Name:	GBF1 (GBF1 Products)
Background:	This gene encodes a member of the Sec7 domain family. The encoded protein is a guanine nucleotide exchange factor that regulates the recruitment of proteins to membranes by mediating GDP to GTP exchange. The encoded protein is localized to the Golgi apparatus and plays a role in vesicular trafficking by activating ADP ribosylation factor 1. The encoded protein has also been identified as an important host factor for viral replication. Multiple transcript variants have been observed for this gene.,GBF1,ARF1GEF,Signal Transduction,GBF1
Molecular Weight:	206 kDa
Gene ID:	8729
UniProt:	Q92538

Application Details

Application Notes:	WB,1:500 - 1:2000
Comment:	HIGH QUALITY
Restrictions:	For Research Use only

Handling

Format:	Liquid
Buffer:	PBS with 0.02 % sodium azide,50 % glycerol, pH 7.3.
Preservative:	Sodium azide
Precaution of Use:	This product contains Sodium azide: a POISONOUS AND HAZARDOUS SUBSTANCE which should be handled by trained staff only.
Storage:	-20 °C
Storage Comment:	Store at -20°C. Avoid freeze / thaw cycles.



Western Blotting

Image 1. Western blot analysis of extracts of HeLa cells, using GBF1 Antibody (ABIN6132031, ABIN6140994, ABIN6140996 and ABIN6216201) at 1:1000 dilution. Secondary antibody: HRP Goat Anti-Rabbit IgG (H+L) (ABIN1684268 and ABIN3020597) at 1:10000 dilution. Lysates/proteins: 25 µg per lane. Blocking buffer: 3 % nonfat dry milk in TBST. Detection: ECL Basic Kit (RM00020). Exposure time: 90s.