

Datasheet for ABIN6141000
anti-GBP2 antibody (AA 410-520)



[Go to Product page](#)

3 Images

Overview

Quantity:	100 µL
Target:	GBP2
Binding Specificity:	AA 410-520
Reactivity:	Human
Host:	Rabbit
Clonality:	Polyclonal
Conjugate:	This GBP2 antibody is un-conjugated
Application:	Western Blotting (WB), Immunofluorescence (IF)

Product Details

Immunogen:	Recombinant fusion protein containing a sequence corresponding to amino acids 410-520 of human GBP2 (NP_004111.2).
Sequence:	QDIFGPLEED VKQGTFSKPG GYRLFTQKLQ ELKNKYYQVP RKGIAKEVL KKYLESKEDV ADALLQTDQS LSEKEKAIEV ERIKAESAEA AKKMLEEIQK KNEEMMEQKE K
Isotype:	IgG
Cross-Reactivity:	Human, Mouse
Characteristics:	Polyclonal Antibodies
Purification:	Affinity purification

Target Details

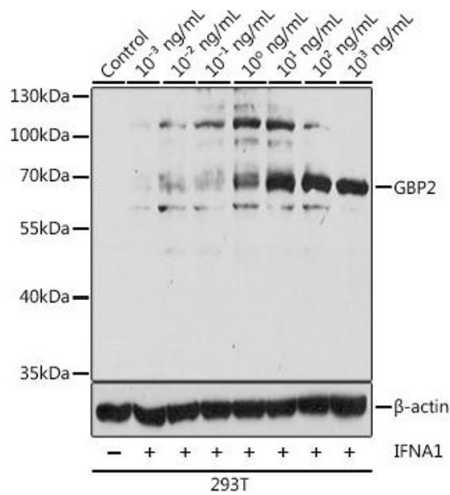
Target:	GBP2
Alternative Name:	GBP2 (GBP2 Products)
Background:	This gene belongs to the guanine-binding protein (GBP) family, which includes interferon-induced proteins that can bind to guanine nucleotides (GMP, GDP and GTP). The encoded protein is a GTPase which hydrolyzes GTP, predominantly to GDP. The protein may play a role as a marker of squamous cell carcinomas.,GBP2,Signal Transduction,Immunology & Inflammation,Cytokines,Interferons,Cell Intrinsic Innate Immunity Signaling Pathway,GBP2
Molecular Weight:	67 kDa
Gene ID:	2634
UniProt:	P32456
Pathways:	Cellular Response to Molecule of Bacterial Origin

Application Details

Application Notes:	WB,1:500 - 1:2000,IF,1:50 - 1:200
Comment:	HIGH QUALITY
Restrictions:	For Research Use only

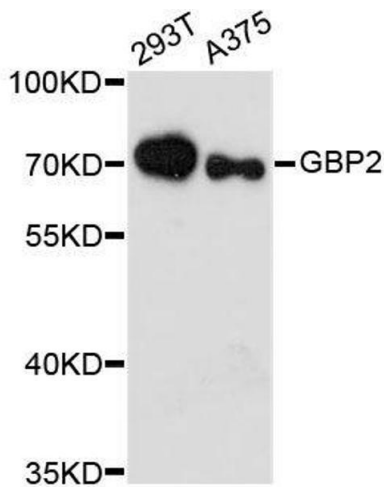
Handling

Format:	Liquid
Buffer:	PBS with 0.02 % sodium azide,50 % glycerol, pH 7.3.
Preservative:	Sodium azide
Precaution of Use:	This product contains Sodium azide: a POISONOUS AND HAZARDOUS SUBSTANCE which should be handled by trained staff only.
Storage:	-20 °C
Storage Comment:	Store at -20°C. Avoid freeze / thaw cycles.



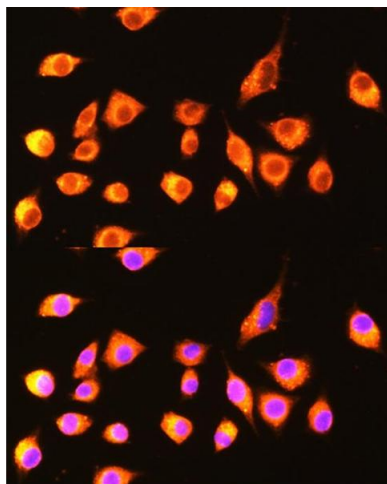
Western Blotting

Image 1. Western blot analysis of extracts of 293T cells, using GBP2 antibody at 1:1000 dilution. 293T cells treated with different concentrations of IFN. Secondary antibody: HRP Goat Anti-Rabbit IgG (H+L) (ABIN1684268 and ABIN3020597) at 1:10000 dilution. Lysates/proteins: 25 μ g per lane. Blocking buffer: 3% BSA. Detection: ECL Basic Kit (RM00020). Exposure time: 10s.



Western Blotting

Image 2. Western blot analysis of extracts of various cell lines, using GBP2 antibody.



Immunofluorescence

Image 3. Immunofluorescence analysis of L929 cells using GBP2 Rabbit pAb at dilution of 1:100 (40x lens). Blue: DAPI for nuclear staining.