

Datasheet for ABIN6141044
anti-GDF5 antibody (AA 350-450)[Go to Product page](#)

1 Image

Overview

Quantity:	100 µL
Target:	GDF5
Binding Specificity:	AA 350-450
Reactivity:	Human
Host:	Rabbit
Clonality:	Polyclonal
Conjugate:	This GDF5 antibody is un-conjugated
Application:	Western Blotting (WB), Immunohistochemistry (IHC)

Product Details

Immunogen:	A synthetic peptide corresponding to a sequence within amino acids 350-450 of human GDF5 (NP_000548.2).
Sequence:	KRDLFFNEIK ARSGQDDKT V YEYLF SQRRK RRAPLATRQG KRPSKNL KAR CSRKALHVNF KDMGWDDWII APLEYEAFHC EGLCEFPLRS HLEPTNHAVI Q
Isotype:	IgG
Cross-Reactivity:	Mouse, Rat
Characteristics:	Polyclonal Antibodies
Purification:	Affinity purification

Target Details

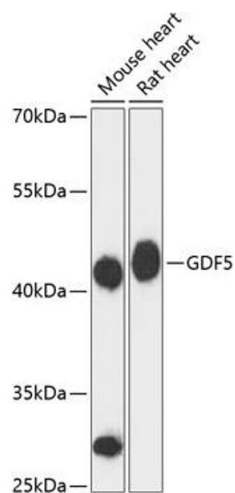
Target:	GDF5
Alternative Name:	GDF5 (GDF5 Products)
Background:	<p>This gene encodes a secreted ligand of the TGF-beta (transforming growth factor-beta) superfamily of proteins. Ligands of this family bind various TGF-beta receptors leading to recruitment and activation of SMAD family transcription factors that regulate gene expression. The encoded preproprotein is proteolytically processed to generate each subunit of the disulfide-linked homodimer. This protein regulates the development of numerous tissue and cell types, including cartilage, joints, brown fat, teeth, and the growth of neuronal axons and dendrites. Mutations in this gene are associated with acromesomelic dysplasia, brachydactyly, chondrodysplasia, multiple synostoses syndrome, proximal symphalangism, and susceptibility to osteoarthritis.,GDF5,BDA1C,BMP-14,BMP14,CDMP1,LAP-4,LAP4,OS5,SYM1B,SYNS2,Signal Transduction,Cell Biology & Developmental Biology,Apoptosis,Growth factor,Immunology & Inflammation,Cytokines,Stem Cells,Cardiovascular,Angiogenesis,GDF5</p>
Molecular Weight:	55 kDa
Gene ID:	8200
UniProt:	P43026

Application Details

Application Notes:	WB,1:500 - 1:2000,IHC,1:50 - 1:200
Restrictions:	For Research Use only

Handling

Format:	Liquid
Buffer:	PBS with 0.02 % sodium azide,50 % glycerol, pH 7.3.
Preservative:	Sodium azide
Precaution of Use:	This product contains Sodium azide: a POISONOUS AND HAZARDOUS SUBSTANCE which should be handled by trained staff only.
Storage:	-20 °C
Storage Comment:	Store at -20°C. Avoid freeze / thaw cycles.



Western Blotting

Image 1. Western blot analysis of extracts of various cell lines, using GDF5 antibody (ABIN6133596, ABIN6141044, ABIN6141045 and ABIN6217062) at 1:3000 dilution. Secondary antibody: HRP Goat Anti-Rabbit IgG (H+L) (ABIN1684268 and ABIN3020597) at 1:10000 dilution. Lysates/proteins: 25 µg per lane. Blocking buffer: 3 % nonfat dry milk in TBST. Detection: ECL Basic Kit (RM00020). Exposure time: 90s.