

Datasheet for ABIN6141046
anti-GDI1 antibody (AA 188-447)



[Go to Product page](#)

1 Image

Overview

Quantity:	100 µL
Target:	GDI1
Binding Specificity:	AA 188-447
Reactivity:	Human
Host:	Rabbit
Clonality:	Polyclonal
Conjugate:	This GDI1 antibody is un-conjugated
Application:	Western Blotting (WB), Immunohistochemistry (IHC)

Product Details

Immunogen:	Recombinant fusion protein containing a sequence corresponding to amino acids 188-447 of human GDI1 (NP_001484.1).
Sequence:	ALALYRTDDY LDQPCLETVN RIKLYSESLA RYGKSPYLYP LYGLGELPQG FARLSAIYGG TYMLNKPVDD IIMENGVVVG VKSEGEVARC KQLICDPSYI PDRVRKAGQV IRIICILSHP IKNTNDANSC QIIIPQNQVN RKSDIYVCM I SYAHNVAAQG KYIAIASTTV ETTDPEKEVE PALELLEPID QKFVAISDLY EPIDDGCESQ VFCSCSYDAT THFETTCNDI KDIYKRMAGT AFDFENMKRK QNDVFGAEQ
Isotype:	IgG
Cross-Reactivity:	Human, Mouse
Characteristics:	Polyclonal Antibodies
Purification:	Affinity purification

Target Details

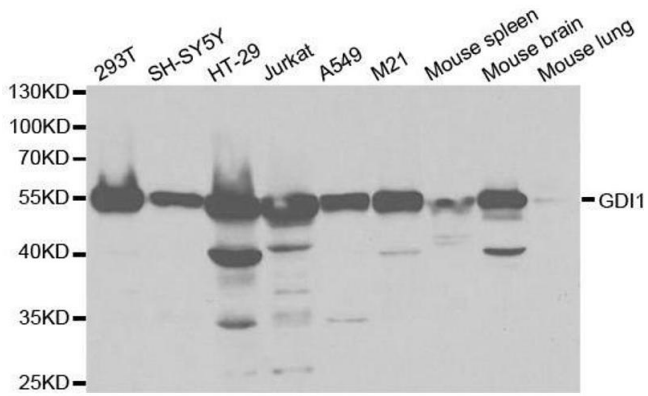
Target:	GDI1
Alternative Name:	GDI1 (GDI1 Products)
Background:	<p>GDP dissociation inhibitors are proteins that regulate the GDP-GTP exchange reaction of members of the rab family, small GTP-binding proteins of the ras superfamily, that are involved in vesicular trafficking of molecules between cellular organelles. GDIs slow the rate of dissociation of GDP from rab proteins and release GDP from membrane-bound rabs. GDI1 is expressed primarily in neural and sensory tissues. Mutations in GDI1 have been linked to X-linked nonspecific mental retardation.,GDI1,1A,GDIL,MRX41,MRX48,OPHN2,RABGD1A,RABGDIA,XAP-4,Signal Transduction,GDI1</p>
Molecular Weight:	50 kDa
Gene ID:	2664
UniProt:	P31150

Application Details

Application Notes:	WB,1:500 - 1:2000,IHC,1:50 - 1:200
Comment:	HIGH QUALITY
Restrictions:	For Research Use only

Handling

Format:	Liquid
Buffer:	PBS with 0.02 % sodium azide,50 % glycerol, pH 7.3.
Preservative:	Sodium azide
Precaution of Use:	This product contains Sodium azide: a POISONOUS AND HAZARDOUS SUBSTANCE which should be handled by trained staff only.
Storage:	-20 °C
Storage Comment:	Store at -20°C. Avoid freeze / thaw cycles.



Western Blotting

Image 1. Western blot analysis of extracts of various cell lines, using GDI1 antibody.