



[Go to Product page](#)

Datasheet for ABIN6141048  
**anti-GDI2 antibody (AA 296-445)**

3 Images

Overview

Quantity:	100 µL
Target:	GDI2
Binding Specificity:	AA 296-445
Reactivity:	Human
Host:	Rabbit
Clonality:	Polyclonal
Conjugate:	This GDI2 antibody is un-conjugated
Application:	Western Blotting (WB), Immunofluorescence (IF)

Product Details

Immunogen:	Recombinant fusion protein containing a sequence corresponding to amino acids 296-445 of human GDI2 (NP_001485.2).
Sequence:	QVIRVICILS HPIKNTNDAN SCQIIPQNNQ VNRKSDIYVC MISFAHNVAQ QGKYIAIVST TVETKEPEKE IRPALELLEP IEQKFVVSISD LLVPKDLGTE SQIFISRTYD ATTHFETTCD DIKNYKRMT GSEFDFEEMK RKKNDIYGED
Isotype:	IgG
Cross-Reactivity:	Human, Mouse, Rat
Characteristics:	Polyclonal Antibodies
Purification:	Affinity purification

## Target Details

---

Target:	GDI2
Alternative Name:	GDI2 ( <a href="#">GDI2 Products</a> )
Background:	GDP dissociation inhibitors are proteins that regulate the GDP-GTP exchange reaction of members of the rab family, small GTP-binding proteins of the ras superfamily, that are involved in vesicular trafficking of molecules between cellular organelles. GDIs slow the rate of dissociation of GDP from rab proteins and release GDP from membrane-bound rabs. GDI2 is ubiquitously expressed. The GDI2 gene contains many repetitive elements indicating that it may be prone to inversion/deletion rearrangements. Alternative splicing results in multiple transcript variants encoding distinct isoforms.,GDI2,HEL-S-46e,RABGDIB,Signal Transduction,GDI2
Molecular Weight:	45 kDa/50 kDa
Gene ID:	2665
UniProt:	<a href="#">P50395</a>

## Application Details

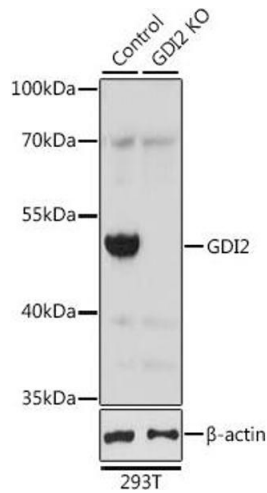
---

Application Notes:	WB,1:200 - 1:3000,IF,1:50 - 1:100
Comment:	HIGH QUALITY
Restrictions:	For Research Use only

## Handling

---

Format:	Liquid
Buffer:	PBS with 0.02 % sodium azide,50 % glycerol, pH 7.3.
Preservative:	Sodium azide
Precaution of Use:	This product contains Sodium azide: a POISONOUS AND HAZARDOUS SUBSTANCE which should be handled by trained staff only.
Storage:	-20 °C
Storage Comment:	Store at -20°C. Avoid freeze / thaw cycles.

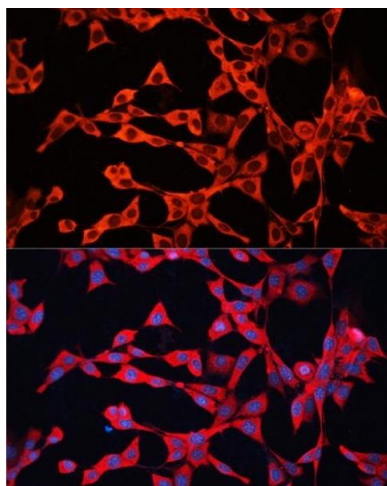
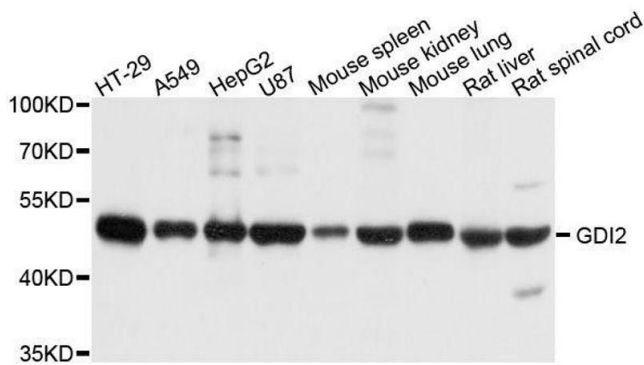


### Western Blotting

**Image 1.** Western blot analysis of extracts from normal (control) and GDI2 knockout (KO) 293T cells, using GDI2 antibody (ABIN6129647, ABIN6141048, ABIN6141049 and ABIN7101828) at 1:2000 dilution. Secondary antibody: HRP Goat Anti-Rabbit IgG (H+L) (ABIN1684268 and ABIN3020597) at 1:10000 dilution. Lysates/proteins: 25 µg per lane. Blocking buffer: 3% nonfat dry milk in TBST. Detection: ECL Basic Kit (RM00020). Exposure time: 1s.

### Western Blotting

**Image 2.** Western blot analysis of extracts of various cell lines, using GDI2 antibody.



### Immunofluorescence

**Image 3.** Immunofluorescence analysis of NIH/3T3 cells using GDI2 antibody (ABIN6129647, ABIN6141048, ABIN6141049 and ABIN7101828) at dilution of 1:100. Blue: DAPI for nuclear staining.