



[Go to Product page](#)

Datasheet for ABIN6141065

anti-GFRA1 antibody (AA 25-280)

5 Images

1 Publication

Overview

Quantity:	100 µL
Target:	GFRA1
Binding Specificity:	AA 25-280
Reactivity:	Human
Host:	Rabbit
Clonality:	Polyclonal
Conjugate:	This GFRA1 antibody is un-conjugated
Application:	Western Blotting (WB), Immunohistochemistry (IHC), Immunofluorescence (IF)

Product Details

Immunogen:	Recombinant fusion protein containing a sequence corresponding to amino acids 25-280 of human GFRA1 (NP_665736.1).
Sequence:	DRLDCVKASD QCLKEQSCST KYRTLRLQCVA GKETNFSLAS GLEAKDECRS AMEALKQKSL YNCRCRGMK KEKNCLRIYW SMYQSLQGND LLEDSPYEPV NSRLSDIFRV VPFISVEHIP KGNCLDAK ACNLDDICKK YRSAYITPCT TSVSNDVCNR RKCHKALRQF FDKVPAKHSY GMLFCSCRDI ACTERRRQTI VPVCSYEERE KPNCNLQDS CKTNYICRSR LADFFTNCQP ESRSVSSCLK ENYADC
Isotype:	IgG
Cross-Reactivity:	Human, Mouse, Rat
Characteristics:	Polyclonal Antibodies
Purification:	Affinity purification

Target Details

Target:	GFRA1
Alternative Name:	GFRA1 (GFRA1 Products)
Background:	<p>This gene encodes a member of the glial cell line-derived neurotrophic factor receptor (GDNFR) family of proteins. The encoded preproprotein is proteolytically processed to generate the mature receptor. Glial cell line-derived neurotrophic factor (GDNF) and neurturin (NTN) are two structurally related, potent neurotrophic factors that play key roles in the control of neuron survival and differentiation. This receptor is a glycosylphosphatidylinositol (GPI)-linked cell surface receptor for both GDNF and NTN, and mediates activation of the RET tyrosine kinase receptor. This gene is a candidate gene for Hirschsprung disease. Alternative splicing results in multiple transcript variants, at least one of which encodes a preproprotein that is proteolytically processed.,GFRA1,GDNFR,GDNFRA,GFR-ALPHA-1,RET1L,RETL1,TRNR1,Neuroscience,GFRA1</p>
Molecular Weight:	50 kDa/51 kDa
Gene ID:	2674
UniProt:	P56159

Application Details

Application Notes:	WB,1:500 - 1:2000,IHC,1:50 - 1:200,IF,1:50 - 1:200
Restrictions:	For Research Use only

Handling

Format:	Liquid
Buffer:	PBS with 0.02 % sodium azide,50 % glycerol, pH 7.3.
Preservative:	Sodium azide
Precaution of Use:	This product contains Sodium azide: a POISONOUS AND HAZARDOUS SUBSTANCE which should be handled by trained staff only.
Storage:	-20 °C
Storage Comment:	Store at -20°C. Avoid freeze / thaw cycles.

Publications

Product cited in:	Chen, Wu, Sang, Wang, Zong, Sun, Liu, Zhao: "The lncRNA HULC functions as an oncogene by targeting ATG7 and ITGB1 in epithelial ovarian carcinoma." in: Cell death & disease , Vol. 8,
-------------------	---

Images

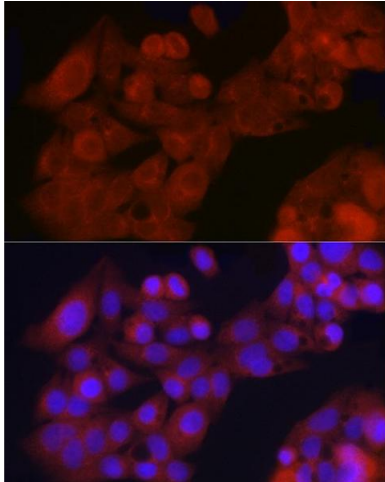
**Immunofluorescence**

Image 1. Immunofluorescence analysis of HepG2 cells using GFR Rabbit pAb (ABIN6127950, ABIN6141065, ABIN6141066 and ABIN6221017) at dilution of 1:200 (40x lens). Blue: DAPI for nuclear staining.

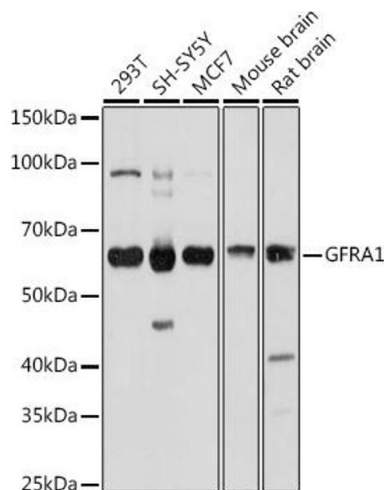
**Western Blotting**

Image 2. Western blot analysis of extracts of various cell lines, using GFR antibody (ABIN6127950, ABIN6141065, ABIN6141066 and ABIN6221017) at 1:1000 dilution. Secondary antibody: HRP Goat Anti-Rabbit IgG (H+L) (ABIN1684268 and ABIN3020597) at 1:10000 dilution. Lysates/proteins: 25 µg per lane. Blocking buffer: 3 % nonfat dry milk in TBST. Detection: ECL Basic Kit (RM00020). Exposure time: 30s.

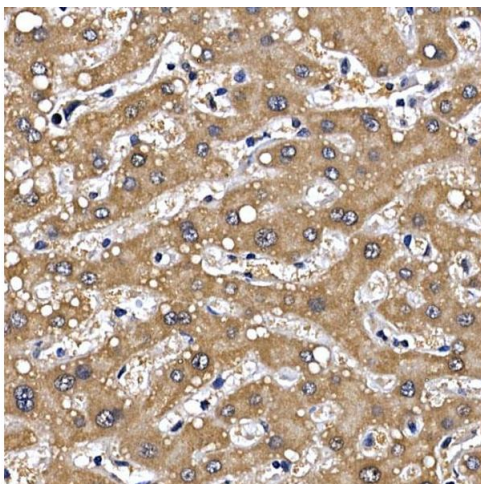
**Immunohistochemistry**

Image 3. Immunohistochemistry of paraffin-embedded human liver using GFR Rabbit pAb (ABIN6127950, ABIN6141065, ABIN6141066 and ABIN6221017) at dilution of 1:100 (40x lens). Perform high pressure antigen retrieval with 10 mM citrate buffer pH 6.0 before commencing with IHC staining protocol.

Please check the [product details page](#) for more images. Overall 5 images are available for ABIN6141065.