



[Go to Product page](#)

Datasheet for ABIN6141068
anti-GGCT antibody (AA 1-188)

1 Image

Overview

Quantity:	100 µL
Target:	GGCT
Binding Specificity:	AA 1-188
Reactivity:	Human
Host:	Rabbit
Clonality:	Polyclonal
Conjugate:	This GGCT antibody is un-conjugated
Application:	Western Blotting (WB)

Product Details

Immunogen:	Recombinant fusion protein containing a sequence corresponding to amino acids 1-188 of human GGCT (NP_076956.1).
Sequence:	MANSGCKDVT GPDEESFLYF AYGSNLLTER IHLRNPSAAF FCVARLQDFK LDFGNSQGKT SQTWHGGIAT IFQSPGDEVW GVVWKMNKSNS LNSLDEQEGV KSGMYVVEIV KVATQEGKEI TCRSYLMTNY ESAPPSPQYK KIICMGAKEN GLPLEYQEKL KAIEPNDYTG KVSEEIEDII KKGETQTL
Isotype:	IgG
Cross-Reactivity:	Human
Characteristics:	Polyclonal Antibodies
Purification:	Affinity purification

Target Details

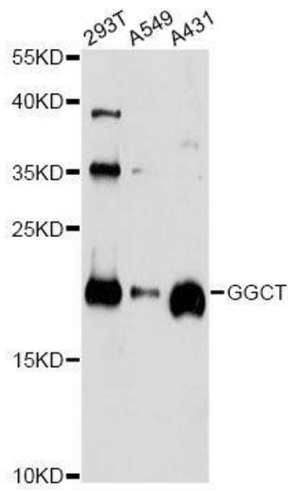
Target:	GGCT
Alternative Name:	GGCT (GGCT Products)
Background:	<p>The protein encoded by this gene catalyzes the formation of 5-oxoproline from gamma-glutamyl dipeptides, the penultimate step in glutathione catabolism, and may play a critical role in glutathione homeostasis. The encoded protein may also play a role in cell proliferation, and the expression of this gene is a potential marker for cancer. Pseudogenes of this gene are located on the long arm of chromosome 5 and the short arm of chromosomes 2 and 20. Alternatively spliced transcript variants encoding multiple isoforms have been observed for this gene.,GGCT,C7orf24,CRF21,GCTG,GGC,Cell Biology & Developmental Biology,Apoptosis,Endocrine & Metabolism,Mitochondrial metabolism,Mitochondrial markers,GGCT</p>
Molecular Weight:	10 kDa/12 kDa/19 kDa/21 kDa
Gene ID:	79017
UniProt:	O75223

Application Details

Application Notes:	WB,1:500 - 1:2000
Comment:	HIGH QUALITY
Restrictions:	For Research Use only

Handling

Format:	Liquid
Buffer:	PBS with 0.02 % sodium azide,50 % glycerol, pH 7.3.
Preservative:	Sodium azide
Precaution of Use:	This product contains Sodium azide: a POISONOUS AND HAZARDOUS SUBSTANCE which should be handled by trained staff only.
Storage:	-20 °C
Storage Comment:	Store at -20°C. Avoid freeze / thaw cycles.



Western Blotting

Image 1. Western blot analysis of extracts of various cell lines, using GGCT antibody.