

Datasheet for ABIN6141075
anti-GHRH antibody (AA 21-107)[Go to Product page](#)

1 Image

Overview

Quantity:	100 µL
Target:	GHRH
Binding Specificity:	AA 21-107
Reactivity:	Human
Host:	Rabbit
Clonality:	Polyclonal
Conjugate:	This GHRH antibody is un-conjugated
Application:	Western Blotting (WB)

Product Details

Immunogen:	Recombinant fusion protein containing a sequence corresponding to amino acids 21-107 of human GHRH (NP_001171660.1).
Sequence:	PPPPLTLRMR RYADAIFTNS YRKVLGQLSA RKLLQDIMSR QQGESNQERG ARARLGRQVD SMWAEQKQME LESILVALLQ KHRNSQG
Isotype:	IgG
Cross-Reactivity:	Human, Mouse, Rat
Characteristics:	Polyclonal Antibodies
Purification:	Affinity purification

Target Details

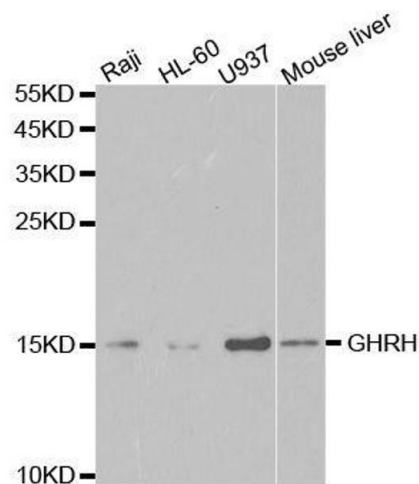
Target:	GHRH
Alternative Name:	GHRH (GHRH Products)
Background:	<p>This gene encodes a member of the glucagon family of proteins. The encoded preproprotein is produced in the hypothalamus and cleaved to generate the mature factor, known as somatoliberin, which acts to stimulate growth hormone release from the pituitary gland. Variant receptors for somatoliberin have been found in several types of tumors, and antagonists of these receptors can inhibit the growth of the tumors. Defects in this gene are a cause of dwarfism, while hypersecretion of the encoded protein is a cause of gigantism. Alternative splicing results in multiple transcript variants, at least one of which encodes a preproprotein that is proteolytically processed.,GHRH,GHRF,GRF,INN,Signal Transduction,Cell Biology & Developmental Biology,Growth factor,GHRH</p>
Molecular Weight:	12 kDa
Gene ID:	2691
UniProt:	P01286
Pathways:	Hormone Transport , Hormone Activity , cAMP Metabolic Process

Application Details

Application Notes:	WB,1:500 - 1:2000
Comment:	HIGH QUALITY
Restrictions:	For Research Use only

Handling

Format:	Liquid
Buffer:	PBS with 0.02 % sodium azide,50 % glycerol, pH 7.3.
Preservative:	Sodium azide
Precaution of Use:	This product contains Sodium azide: a POISONOUS AND HAZARDOUS SUBSTANCE which should be handled by trained staff only.
Storage:	-20 °C
Storage Comment:	Store at -20°C. Avoid freeze / thaw cycles.



Western Blotting

Image 1. Western blot analysis of extracts of various cell lines, using GHRH antibody.