

Datasheet for ABIN6141085
anti-GIMAP5 antibody (AA 190-270)[Go to Product page](#)

1 Image

Overview

Quantity:	100 µL
Target:	GIMAP5
Binding Specificity:	AA 190-270
Reactivity:	Human
Host:	Rabbit
Clonality:	Polyclonal
Conjugate:	This GIMAP5 antibody is un-conjugated
Application:	Western Blotting (WB)

Product Details

Immunogen:	Recombinant fusion protein containing a sequence corresponding to amino acids 190-270 of human GIMAP5 (NP_060854.2).
Sequence:	WGSVEEQRQQ QAELLAVIER LGREREGSFH SNDLFLDAQ LQRTGAGACQ EDYRQYQAKV EWQVEKHKQE LRENESNWAY K
Isotype:	IgG
Cross-Reactivity:	Human, Mouse, Rat
Characteristics:	Polyclonal Antibodies
Purification:	Affinity purification

Target Details

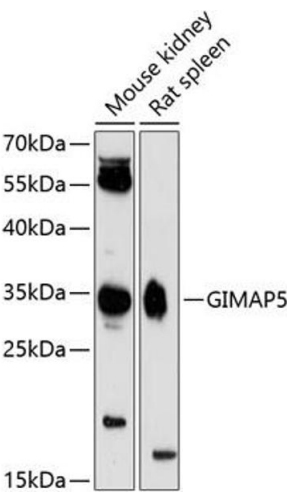
Target:	GIMAP5
Alternative Name:	GIMAP5 (GIMAP5 Products)
Background:	This gene encodes a protein belonging to the GTP-binding superfamily and to the immun-associated nucleotide (IAN) subfamily of nucleotide-binding proteins. In humans, the IAN subfamily genes are located in a cluster at 7q36.1. This gene encodes an antiapoptotic protein that functions in T-cell survival. Polymorphisms in this gene are associated with systemic lupus erythematosus. Read-through transcription exists between this gene and the neighboring upstream GIMAP1 (GTPase, IMAP family member 1) gene.,GIMAP5,HIMAP3,IAN-5,IAN4,IAN4L1,IAN5,IMAP3,IROD,Signal Transduction,Immunology & Inflammation,GIMAP5
Molecular Weight:	34 kDa/39 kDa
Gene ID:	55340
UniProt:	Q96F15
Pathways:	Regulation of Leukocyte Mediated Immunity , Positive Regulation of Immune Effector Process , Production of Molecular Mediator of Immune Response

Application Details

Application Notes:	WB,1:500 - 1:2000
Restrictions:	For Research Use only

Handling

Format:	Liquid
Buffer:	PBS with 0.02 % sodium azide,50 % glycerol, pH 7.3.
Preservative:	Sodium azide
Precaution of Use:	This product contains Sodium azide: a POISONOUS AND HAZARDOUS SUBSTANCE which should be handled by trained staff only.
Storage:	-20 °C
Storage Comment:	Store at -20°C. Avoid freeze / thaw cycles.



Western Blotting

Image 1. Western blot analysis of extracts of various cell lines, using GIM antibody (ABIN6127954, ABIN6141085, ABIN6141086 and ABIN6224753) at 1:3000 dilution. Secondary antibody: HRP Goat Anti-Rabbit IgG (H+L) (ABIN1684268 and ABIN3020597) at 1:10000 dilution. Lysates/proteins: 25 µg per lane. Blocking buffer: 3 % nonfat dry milk in TBST. Detection: ECL Enhanced Kit (RM00021). Exposure time: 90s.