

Datasheet for ABIN6141104
anti-GJB1 antibody (AA 214-283)[Go to Product page](#)

1 Image

Overview

Quantity:	100 µL
Target:	GJB1
Binding Specificity:	AA 214-283
Reactivity:	Human
Host:	Rabbit
Clonality:	Polyclonal
Conjugate:	This GJB1 antibody is un-conjugated
Application:	Western Blotting (WB)

Product Details

Immunogen:	Recombinant fusion protein containing a sequence corresponding to amino acids 214-283 of human GJB1 (NP_000157.1).
Sequence:	IRACARRAQR RSNPPSRKGS GFGHRLSPEY KQNEINKLLS EQDGLKDIL RRSPGTGAGL AEKSDRCSAC
Isotype:	IgG
Cross-Reactivity:	Human, Mouse, Rat
Characteristics:	Polyclonal Antibodies
Purification:	Affinity purification

Target Details

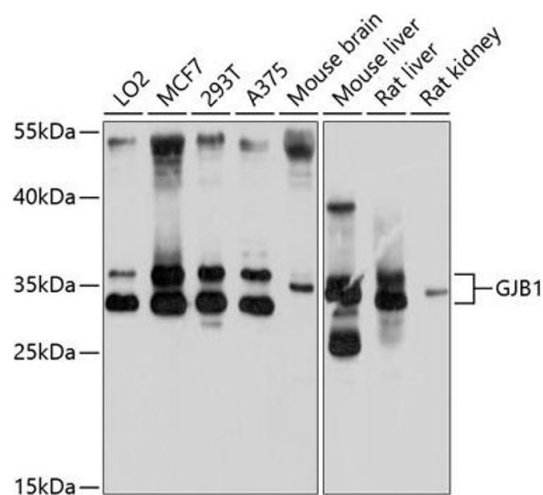
Target:	GJB1
Alternative Name:	GJB1 (GJB1 Products)
Background:	This gene encodes a member of the gap junction protein family. The gap junction proteins are membrane-spanning proteins that assemble to form gap junction channels that facilitate the transfer of ions and small molecules between cells. According to sequence similarities at the nucleotide and amino acid levels, the gap junction proteins are divided into two categories, alpha and beta. Mutations in this gene cause X-linked Charcot-Marie-Tooth disease, an inherited peripheral neuropathy. Alternatively spliced transcript variants encoding the same protein have been found for this gene.,GJB1,CMTX,CMTX1,CX32,Neuroscience,GJB1
Molecular Weight:	32 kDa
Gene ID:	2705
UniProt:	P08034
Pathways:	Cell-Cell Junction Organization

Application Details

Application Notes:	WB,1:200 - 1:1000
Restrictions:	For Research Use only

Handling

Format:	Liquid
Buffer:	PBS with 0.02 % sodium azide,50 % glycerol, pH 7.3.
Preservative:	Sodium azide
Precaution of Use:	This product contains Sodium azide: a POISONOUS AND HAZARDOUS SUBSTANCE which should be handled by trained staff only.
Storage:	-20 °C
Storage Comment:	Store at -20°C. Avoid freeze / thaw cycles.



Western Blotting

Image 1. Western blot analysis of extracts of various cell lines, using GJB1 antibody (ABIN6130197, ABIN6141104, ABIN6141105 and ABIN6214243) at 1:1000 dilution. Secondary antibody: HRP Goat Anti-Rabbit IgG (H+L) (ABIN1684268 and ABIN3020597) at 1:10000 dilution. Lysates/proteins: 25 µg per lane. Blocking buffer: 3 % nonfat dry milk in TBST. Detection: ECL Basic Kit (RM00020). Exposure time: 30s.