



[Go to Product page](#)

Datasheet for ABIN6141114
anti-GLA antibody (AA 150-429)

2 Images

Overview

Quantity:	100 µL
Target:	GLA
Binding Specificity:	AA 150-429
Reactivity:	Human
Host:	Rabbit
Clonality:	Polyclonal
Conjugate:	This GLA antibody is un-conjugated
Application:	Western Blotting (WB), Immunofluorescence (IF)

Product Details

Immunogen:	Recombinant fusion protein containing a sequence corresponding to amino acids 150-429 of human Galactosidase alpha (Galactosidase alpha (GLA)) (NP_000160.1).
Sequence:	GYDIDAQTF ADWGVDLLKF DGCYCDSLEN LADGYKHMSL ALNRTGRSIV YSCEWPLYMW PFQKPNYTEI RQYCNHWRNF ADIDDSWKSI KSILDWTSFN QERIVDVAGP GGWNDPDMMLV IGNFGLSWNQ QVTQMALWAI MAAPLFMSND LRHISPAKA LLQDKDVIAI NQDPLGKQGY QLRQGDNFEV WERPLSGLAW AVAMINRQEI GGPRSYTIAV ASLGKGVACN PACFITQLLP VKRKLGFYEW TSRLRSHINP TGTVLLQLEN TMQMSLKDLL
Isotype:	IgG
Cross-Reactivity:	Human, Mouse
Characteristics:	Polyclonal Antibodies
Purification:	Affinity purification

Target Details

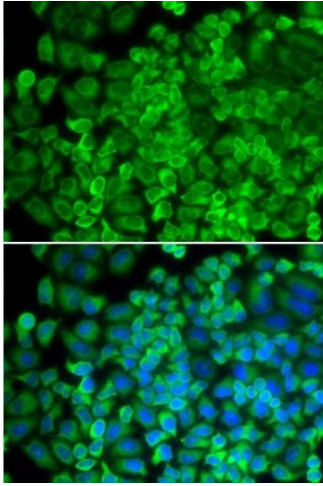
Target:	GLA
Alternative Name:	GLA (GLA Products)
Background:	This gene encodes a homodimeric glycoprotein that hydrolyses the terminal alpha-galactosyl moieties from glycolipids and glycoproteins. This enzyme predominantly hydrolyzes ceramide trihexoside, and it can catalyze the hydrolysis of melibiose into galactose and glucose. A variety of mutations in this gene affect the synthesis, processing, and stability of this enzyme, which causes Fabry disease, a rare lysosomal storage disorder that results from a failure to catabolize alpha-D-galactosyl glycolipid moieties.,GLA,GALA,Cardiovascular,Blood,Blood Cell Antigens,GLA
Molecular Weight:	48 kDa
Gene ID:	2717
UniProt:	P06280
Pathways:	SARS-CoV-2 Protein Interactome

Application Details

Application Notes:	WB,1:500 - 1:2000,IF,1:50 - 1:100
Restrictions:	For Research Use only

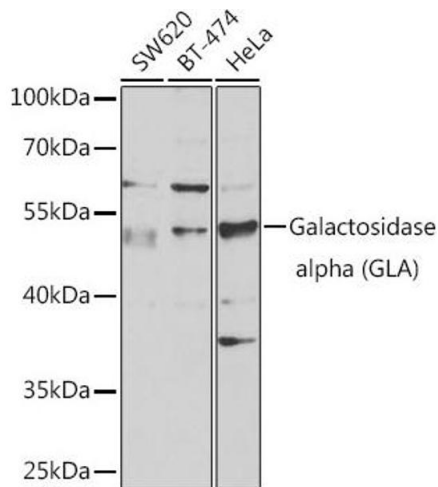
Handling

Format:	Liquid
Buffer:	PBS with 0.02 % sodium azide,50 % glycerol, pH 7.3.
Preservative:	Sodium azide
Precaution of Use:	This product contains Sodium azide: a POISONOUS AND HAZARDOUS SUBSTANCE which should be handled by trained staff only.
Storage:	-20 °C
Storage Comment:	Store at -20°C. Avoid freeze / thaw cycles.



Immunofluorescence

Image 1. Immunofluorescence analysis of HeLa cells using Galactosidase alpha (Galactosidase alpha (GLA)) antibody (ABIN6131511, ABIN6141114, ABIN6141116 and ABIN6218799). Blue: DAPI for nuclear staining.



Western Blotting

Image 2. Western blot analysis of extracts of various cell lines, using Galactosidase alpha (Galactosidase alpha (GLA)) antibody (ABIN6131511, ABIN6141114, ABIN6141116 and ABIN6218799) at 1:1000 dilution. Secondary antibody: HRP Goat Anti-Rabbit IgG (H+L) (ABIN1684268 and ABIN3020597) at 1:10000 dilution. Lysates/proteins: 25 µg per lane. Blocking buffer: 3 % nonfat dry milk in TBST. Detection: ECL Enhanced Kit (RM00021). Exposure time: 30s.