

Datasheet for ABIN6141125
anti-GLG1 antibody (AA 974-1203)



[Go to Product page](#)

1 Image

Overview

Quantity:	100 µL
Target:	GLG1
Binding Specificity:	AA 974-1203
Reactivity:	Human
Host:	Rabbit
Clonality:	Polyclonal
Conjugate:	This GLG1 antibody is un-conjugated
Application:	Western Blotting (WB)

Product Details

Immunogen:	Recombinant fusion protein containing a sequence corresponding to amino acids 974-1203 of human GLG1 (NP_036333.2).
Sequence:	RYADQRLSSD CEDQIRIIIQ ESALDYRLDP QLQLHCSDEI SSLCAEEAAA QEQTGQVEEC LKVNLLKIKT ELCKKEVLNM LKESKADIFV DPVLHTACAL DIKHHCAAIT PGRGRQMSCL MEALEDKRVR LQPECKKRLN DRIEMWSYAA KVAPADGFSD LAMQVMTSPS KNYILSVISG SICILFLIGL MCGRITKRVT RELKDRLQYR SETMAYKGLV WSQDVTGSPA
Isotype:	IgG
Cross-Reactivity:	Human, Mouse
Characteristics:	Polyclonal Antibodies
Purification:	Affinity purification

Target Details

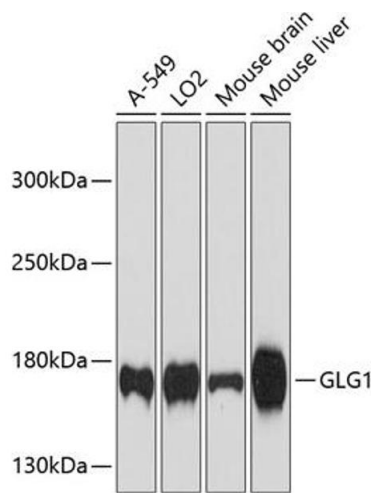
Target:	GLG1
Alternative Name:	GLG1 (GLG1 Products)
Background:	Binds fibroblast growth factor and E-selectin (cell-adhesion lectin on endothelial cells mediating the binding of neutrophils.,GLG1,CFR-1,ESL-1,MG-160,MG160,GLG1
Molecular Weight:	134 kDa/135 kDa/137 kDa
Gene ID:	2734
UniProt:	Q92896

Application Details

Application Notes:	WB,1:500 - 1:1000
Restrictions:	For Research Use only

Handling

Format:	Liquid
Buffer:	PBS with 0.02 % sodium azide,50 % glycerol, pH 7.3.
Preservative:	Sodium azide
Precaution of Use:	This product contains Sodium azide: a POISONOUS AND HAZARDOUS SUBSTANCE which should be handled by trained staff only.
Storage:	-20 °C
Storage Comment:	Store at -20°C. Avoid freeze / thaw cycles.



Western Blotting

Image 1. Western blot analysis of extracts of various cell lines, using GLG1 antibody at 1:3000 dilution. Secondary antibody: HRP Goat Anti-Rabbit IgG (H+L) (ABIN1684268 and ABIN3020597) at 1:10000 dilution. Lysates/proteins: 25 µg per lane. Blocking buffer: 3% nonfat dry milk in TBST. Detection: ECL Enhanced Kit (RM00021). Exposure time: 90s.