



[Go to Product page](#)

Datasheet for ABIN6141131
anti-GLIS3 antibody (AA 606-775)

1 Image

Overview

Quantity:	100 µL
Target:	GLIS3
Binding Specificity:	AA 606-775
Reactivity:	Human
Host:	Rabbit
Clonality:	Polyclonal
Conjugate:	This GLIS3 antibody is un-conjugated
Application:	Western Blotting (WB)

Product Details

Immunogen:	Recombinant fusion protein containing a sequence corresponding to amino acids 606-775 of human GLIS3 (NP_689842.3).
Sequence:	DAGAERFAPS APSPHHISPR RVPAPSSILQ RTQPPYTQQP SGSHLKSYPQ ETNSSFQPNG IHVHGFYQQL QKFCPPHYPD SQRIVPPVSS CSVVPSFEDC LVPTSMGQAS FDFVHRAFST HSGITVYDLP SSSSSLFGES LRSGAEDATF LQISTVDRCP SQLSSVYTEG
Isotype:	IgG
Cross-Reactivity:	Human, Mouse
Characteristics:	Polyclonal Antibodies
Purification:	Affinity purification

Target Details

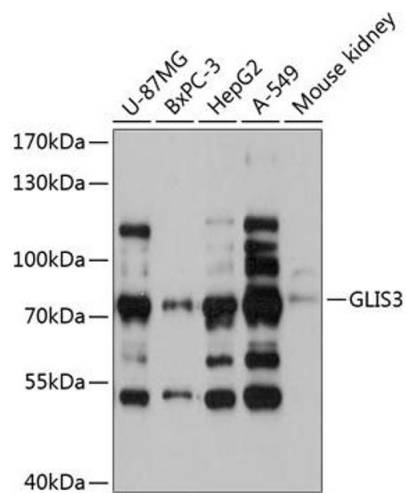
Target:	GLIS3
Alternative Name:	GLIS3 (GLIS3 Products)
Background:	This gene is a member of the GLI-similar zinc finger protein family and encodes a nuclear protein with five C2H2-type zinc finger domains. This protein functions as both a repressor and activator of transcription and is specifically involved in the development of pancreatic beta cells, the thyroid, eye, liver and kidney. Mutations in this gene have been associated with neonatal diabetes and congenital hypothyroidism (NDH). Alternatively spliced variants that encode different protein isoforms have been described but the full-length nature of only two have been determined.,GLIS3,NDH,ZNF515,Epigenetics & Nuclear Signaling,Transcription Factors,GLIS3
Molecular Weight:	83 kDa/99 kDa
Gene ID:	169792
UniProt:	Q8NEA6

Application Details

Application Notes:	WB,1:500 - 1:2000
Restrictions:	For Research Use only

Handling

Format:	Liquid
Buffer:	PBS with 0.02 % sodium azide,50 % glycerol, pH 7.3.
Preservative:	Sodium azide
Precaution of Use:	This product contains Sodium azide: a POISONOUS AND HAZARDOUS SUBSTANCE which should be handled by trained staff only.
Storage:	-20 °C
Storage Comment:	Store at -20°C. Avoid freeze / thaw cycles.



Western Blotting

Image 1. Western blot analysis of extracts of various cell lines, using GLIS3 antibody at 1:3000 dilution. Secondary antibody: HRP Goat Anti-Rabbit IgG (H+L) (ABIN1684268 and ABIN3020597) at 1:10000 dilution. Lysates/proteins: 25 µg per lane. Blocking buffer: 3% nonfat dry milk in TBST. Detection: ECL Basic Kit (RM00020). Exposure time: 5s.