

Datasheet for ABIN6141172
anti-Prmel15 antibody (AA 1-477)



[Go to Product page](#)

4 Images

Overview

| | |
|----------------------|---|
| Quantity: | 100 µL |
| Target: | Prmel15 |
| Binding Specificity: | AA 1-477 |
| Reactivity: | Mouse |
| Host: | Rabbit |
| Clonality: | Polyclonal |
| Conjugate: | This Prmel15 antibody is un-conjugated |
| Application: | Western Blotting (WB), Immunohistochemistry (IHC) |

Product Details

| | |
|------------|---|
| Immunogen: | Recombinant fusion protein containing a sequence corresponding to amino acids 1-477 of mouse Gm13125 (NP_001108549.1). |
| Sequence: | MSSKPLLTQL ELAAQNILRN EALAISALQY LPELFLPQLL KQAYDGNHLK VLRAIVSSWP FPRLPLGALK KRTPYLETQL QVVLEEVDKL LIQEVHPREY KLEVLDLRSV GQNYLNVWPG AMDDWLPKTT QTDPCCSKTV MTQPLKVLVD LQLNNRGQSR LFSYLVQWSD RRGKLLQLYC NKLQIWSPSQ QNYRKLKLSQKV NLDYVETLGL HSSCSPSFLL NFAPYLRQMR NLRKLALSNI REEHIISPEK RRCIITRFTL QILKLESQK LHLDAVCFLE GHLDQLLGSV KTSLEDELAVT HCNLSVSEWS HFSEFPCVSQ LQQLNLENVR LTGLSPEPLQ VLLVKAGPTL VALDLEDCHL EDGQLYAILP ALSKCFKLTG FSFYGNQISM LAMKDLLHHT ASLIHLRLEL YPVPQDSYDY HGTPLMQRMQ QHCDELMNLL KTFRNPGRVF FGTDRCDQCC NRYIYNKTIM CNCRRSY |
| Isotype: | IgG |

Product Details

Cross-Reactivity: Human, Mouse, Rat

Characteristics: Polyclonal Antibodies

Purification: Affinity purification

Target Details

Target: Pramel15

Alternative Name: Gm13125 ([Pramel15 Products](#))

Background: PRAMEF20,PRAMEF21,Gm13125,Gm13125

Molecular Weight: 55 kDa

Gene ID: 627009

UniProt: [Q5VT98](#)

Application Details

Application Notes: WB,1:500 - 1:2000,IHC,1:50 - 1:200

Restrictions: For Research Use only

Handling

Format: Liquid

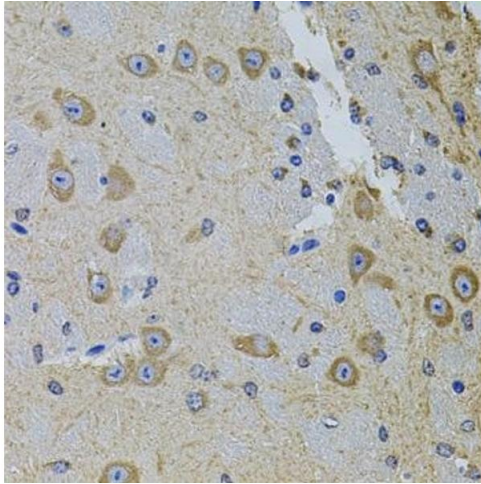
Buffer: PBS with 0.02 % sodium azide,50 % glycerol, pH 7.3.

Preservative: Sodium azide

Precaution of Use: This product contains Sodium azide: a POISONOUS AND HAZARDOUS SUBSTANCE which should be handled by trained staff only.

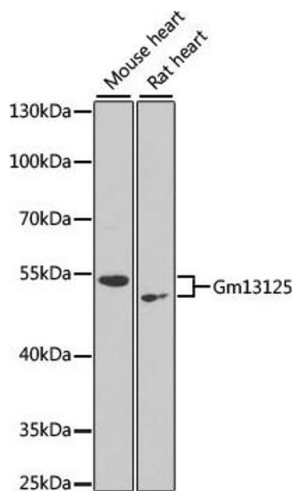
Storage: -20 °C

Storage Comment: Store at -20°C. Avoid freeze / thaw cycles.



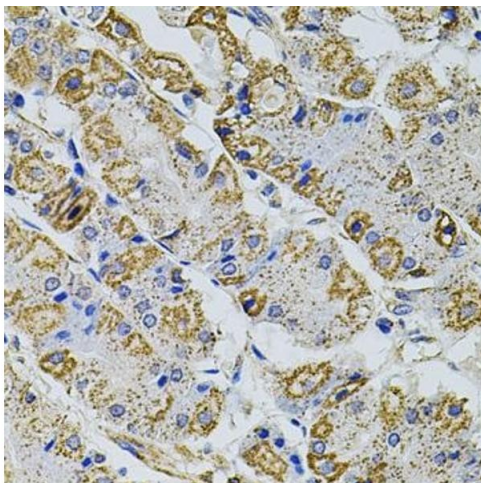
Immunohistochemistry

Image 1. Immunohistochemistry of paraffin-embedded mouse brain using GM13125 antibody (ABIN6127294, ABIN6141172, ABIN6141175 and ABIN6216319) at dilution of 1:100 (40x lens). Perform microwave antigen retrieval with 10 mM PBS buffer pH 7.2 before commencing with IHC staining protocol.



Western Blotting

Image 2. Western blot analysis of extracts of various cell lines, using Gm13125 antibody (ABIN6127294, ABIN6141172, ABIN6141175 and ABIN6216319) at 1:1000 dilution. Secondary antibody: HRP Goat Anti-Rabbit IgG (H+L) (ABIN1684268 and ABIN3020597) at 1:10000 dilution. Lysates/proteins: 25 µg per lane. Blocking buffer: 3 % nonfat dry milk in TBST. Detection: ECL Enhanced Kit (RM00021). Exposure time: 90s.



Immunohistochemistry

Image 3. Immunohistochemistry of paraffin-embedded human stomach using GM13125 antibody (ABIN6127294, ABIN6141172, ABIN6141175 and ABIN6216319) at dilution of 1:100 (40x lens). Perform microwave antigen retrieval with 10 mM PBS buffer pH 7.2 before commencing with IHC staining protocol.

Please check the [product details page](#) for more images. Overall 4 images are available for ABIN6141172.