

Datasheet for ABIN6141174
anti-Prmel15 antibody (AA 67-274)



[Go to Product page](#)

3 Images

Overview

Quantity:	100 µL
Target:	Prmel15
Binding Specificity:	AA 67-274
Reactivity:	Mouse
Host:	Rabbit
Clonality:	Polyclonal
Conjugate:	This Prmel15 antibody is un-conjugated
Application:	Western Blotting (WB), Immunohistochemistry (IHC)

Product Details

Immunogen:	Recombinant fusion protein containing a sequence corresponding to amino acids 67-274 of mouse Gm13125 (NP_001108549.1).
Sequence:	GALKKRTPYL ETQLQVVLEE VDKLLIQEVH PREYKLEVLD LRSVGQNYLN VWPGAMDDWL PKTTQTDPCCK SKTVMTQPLK VLVDLQLNLR GQSRLFSYLV QWSDRRKGLL QLYCNKLQIW SPSQQNYRKL SQKVNLDYVE TLGLHSSCSP SFLLNFAPYL RQMRNLRKLA LSNIREEHII SPEKRRCIIT RFTLQILKLE SLQKLHLD
Isotype:	IgG
Cross-Reactivity:	Human, Mouse, Rat
Characteristics:	Polyclonal Antibodies
Purification:	Affinity purification

Target Details

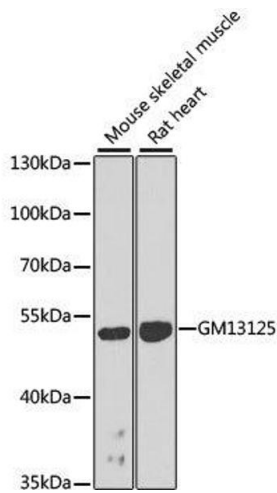
Target:	Pramel15
Alternative Name:	Gm13125 (Pramel15 Products)
Background:	PRAMEF20,PRAMEF21,Gm13125,Gm13125
Molecular Weight:	55 kDa
Gene ID:	627009
UniProt:	Q5VT98

Application Details

Application Notes:	WB,1:500 - 1:2000,IHC,1:100 - 1:200
Comment:	HIGH QUALITY
Restrictions:	For Research Use only

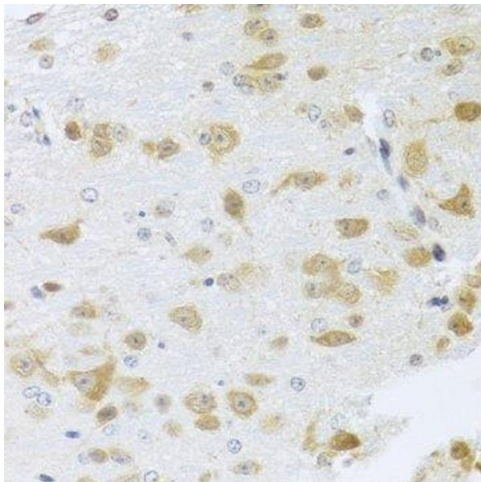
Handling

Format:	Liquid
Buffer:	PBS with 0.02 % sodium azide,50 % glycerol, pH 7.3.
Preservative:	Sodium azide
Precaution of Use:	This product contains Sodium azide: a POISONOUS AND HAZARDOUS SUBSTANCE which should be handled by trained staff only.
Storage:	-20 °C
Storage Comment:	Store at -20°C. Avoid freeze / thaw cycles.



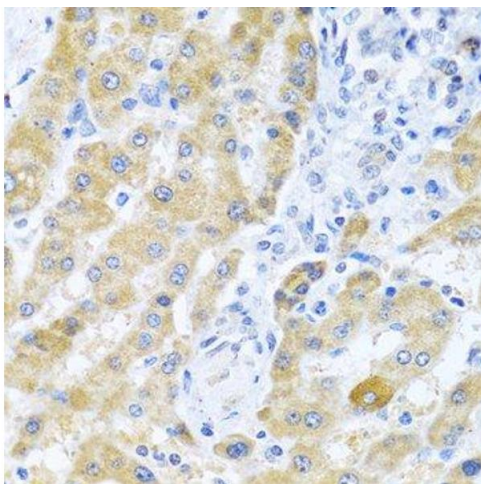
Western Blotting

Image 1. Western blot analysis of extracts of various cell lines, using Gm13125 antibody.



Immunohistochemistry (Paraffin-embedded Sections)

Image 2. Immunohistochemistry of paraffin-embedded mouse brain using Gm13125 antibody.



Immunohistochemistry (Paraffin-embedded Sections)

Image 3. Immunohistochemistry of paraffin-embedded human liver cancer using Gm13125 antibody.