

Datasheet for ABIN6141223
anti-GNB2 antibody (AA 1-340)



[Go to Product page](#)

5 Images

Overview

Quantity:	100 µL
Target:	GNB2
Binding Specificity:	AA 1-340
Reactivity:	Human
Host:	Rabbit
Clonality:	Polyclonal
Conjugate:	This GNB2 antibody is un-conjugated
Application:	Western Blotting (WB), Immunohistochemistry (IHC), Immunofluorescence (IF)

Product Details

Immunogen:	Recombinant fusion protein containing a sequence corresponding to amino acids 1-340 of human GNB2 (NP_005264.2).
Sequence:	MSELEQLRQE AEQLRNQIRD ARKACGDSTL TQITAGLDPV GRIQMRTRRT LRGHLAKIYA MHWGTDSTRLL VSASQDGKLI IWDSYTTNKV HAIPLRSSWV MTCAYAPSGN FVACGGLDNI CSIYSLKTR EGNVRVSRELP GHTGYLSSCR FLDDNQIITS SGGTTTCALWD IETGQQTVGF AGHSGDVMSL SLAPDGRFTV SGACDASIKL WDVDRSMCRQ TFIGHESDIN AVAFFPNGYA FTTGSDDATC RFLDLRADQE LLMYSHDNII CGITSVAFSR SGRLLLAGYD DFNCNIWDAM KGDRAGVLAG HDNRVSLGLV TDDGMAVATG SWDSFLKIWN
Isotype:	IgG
Cross-Reactivity:	Human, Mouse, Rat
Characteristics:	Polyclonal Antibodies

Product Details

Purification: Affinity purification

Target Details

Target: GNB2

Alternative Name: GNB2 ([GNB2 Products](#))

Background: Heterotrimeric guanine nucleotide-binding proteins (G proteins), which integrate signals between receptors and effector proteins, are composed of an alpha, a beta, and a gamma subunit. These subunits are encoded by families of related genes. This gene encodes a beta subunit. Beta subunits are important regulators of alpha subunits, as well as of certain signal transduction receptors and effectors. This gene contains a trinucleotide (CCG) repeat length polymorphism in its 5' UTR.,GNB2,Epigenetics & Nuclear Signaling,Translation Control,Regulation of eIF4 and p70 S6 Kinase,Cancer,Signal Transduction,G protein signaling,mTOR Signaling Pathway,Phospholipase Signaling Pathway,MAPK-JNK Signaling Pathway,Endocrine & Metabolism,Neuroscience,Neurodegenerative Diseases,Dopamine Signaling in Parkinson's Disease,GNB2

Molecular Weight: 25 kDa/37 kDa

Gene ID: 2783

UniProt: [P62879](#)

Pathways: [Myometrial Relaxation and Contraction](#)

Application Details

Application Notes: WB,1:500 - 1:2000,IHC,1:50 - 1:200,IF,1:50 - 1:200

Comment: HIGH QUALITY

Restrictions: For Research Use only

Handling

Format: Liquid

Buffer: PBS with 0.02 % sodium azide,50 % glycerol, pH 7.3.

Preservative: Sodium azide

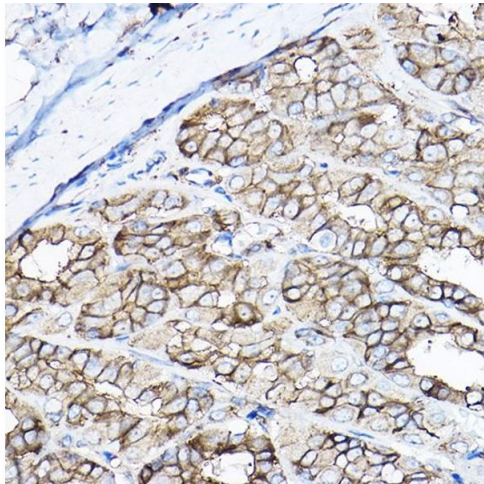
Precaution of Use: This product contains Sodium azide: a POISONOUS AND HAZARDOUS SUBSTANCE which should be handled by trained staff only.

Handling

Storage: -20 °C

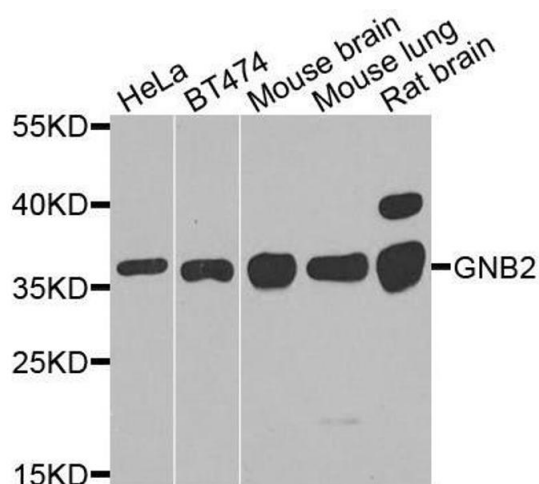
Storage Comment: Store at -20°C. Avoid freeze / thaw cycles.

Images



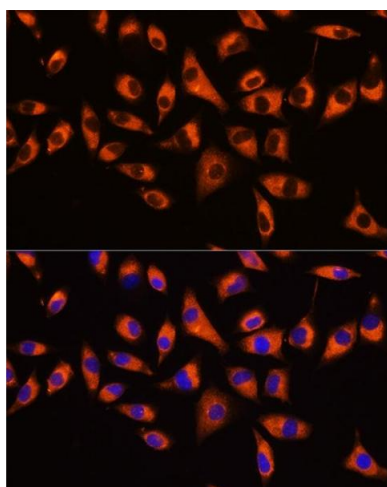
Immunohistochemistry

Image 1. Immunohistochemistry of paraffin-embedded rat stomach using GNB2 Rabbit pAb at dilution of 1:100 (40x lens). Perform high pressure antigen retrieval with 10 mM citrate buffer pH 6.0 before commencing with IHC staining protocol.



Western Blotting

Image 2. Western blot analysis of extracts of various cell lines, using GNB2 antibody.



Immunofluorescence

Image 3. Immunofluorescence analysis of L929 cells using GNB2 Rabbit pAb at dilution of 1:100 (40x lens). Blue: DAPI for nuclear staining.

Please check the [product details page](#) for more images. Overall 5 images are available for ABIN6141223.