



[Go to Product page](#)

Datasheet for ABIN6141259  
**anti-GnRH2 antibody (AA 24-120)**

5 Images

Overview

Quantity:	100 µL
Target:	GnRH2
Binding Specificity:	AA 24-120
Reactivity:	Human
Host:	Rabbit
Clonality:	Polyclonal
Conjugate:	This GnRH2 antibody is un-conjugated
Application:	Western Blotting (WB), Immunofluorescence (IF)

Product Details

Immunogen:	Recombinant fusion protein containing a sequence corresponding to amino acids 24-120 of human GNRH2 (NP_001492.1).
Sequence:	QHWSHGWYPG GKRALSSAQD PQNALRPPGR ALDTAAGSPV QTAHGLPSDA LAPLDDSPW EGRTTAQWSL HRKRHLARTL LTAAREPRPA PPSSNKV
Isotype:	IgG
Cross-Reactivity:	Human, Mouse, Rat
Characteristics:	Polyclonal Antibodies
Purification:	Affinity purification

## Target Details

---

Target:	GnRH2
Alternative Name:	GNRH2 ( <a href="#">GnRH2 Products</a> )
Background:	This gene encodes a secreted peptide hormone and member of the gonadotropin-releasing hormone (GnRH) family of proteins. The encoded protein regulates reproductive function by stimulating the production and release of the gonadotropins follicle-stimulating hormone (FSH) and luteinizing hormone (LH). The encoded protein may inhibit endometrial, ovarian, prostate, and breast cancer cell proliferation. Alternative splicing results in multiple transcript variants.,GNRH2,GnRH-II,LH-RHII,Signal Transduction,Cell Biology & Developmental Biology,Growth factor,GNRH2
Molecular Weight:	12 kDa
Gene ID:	2797
UniProt:	<a href="#">O43555</a>
Pathways:	<a href="#">Hormone Activity</a>

## Application Details

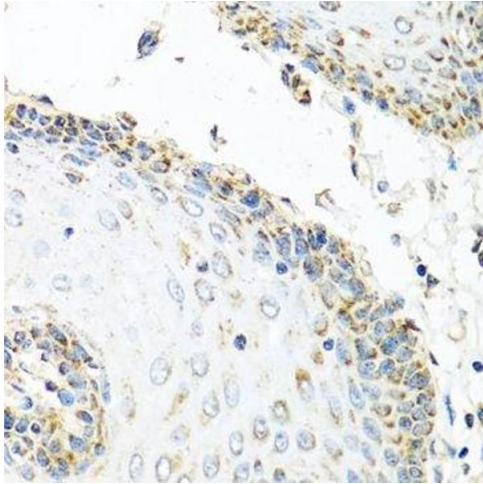
---

Application Notes:	WB,1:500 - 1:2000,IF,1:50 - 1:100
Comment:	HIGH QUALITY
Restrictions:	For Research Use only

## Handling

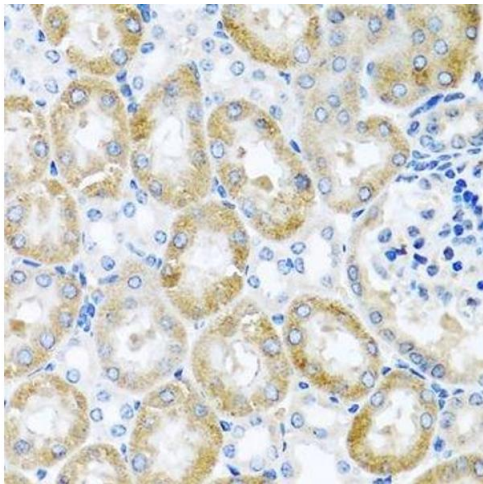
---

Format:	Liquid
Buffer:	PBS with 0.02 % sodium azide,50 % glycerol, pH 7.3.
Preservative:	Sodium azide
Precaution of Use:	This product contains Sodium azide: a POISONOUS AND HAZARDOUS SUBSTANCE which should be handled by trained staff only.
Storage:	-20 °C
Storage Comment:	Store at -20°C. Avoid freeze / thaw cycles.



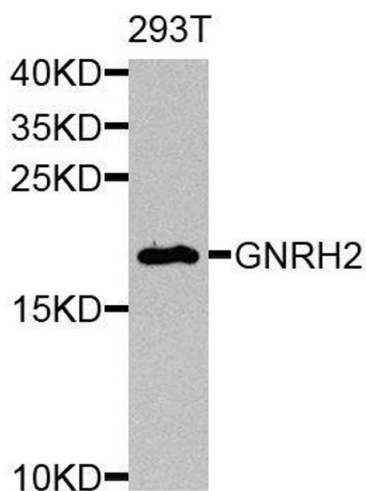
#### Immunohistochemistry (Paraffin-embedded Sections)

**Image 1.** Immunohistochemistry of paraffin-embedded human esophagus using GNRH2 antibody.



#### Immunohistochemistry (Paraffin-embedded Sections)

**Image 2.** Immunohistochemistry of paraffin-embedded mouse kidney using GNRH2 antibody.



#### Western Blotting

**Image 3.** Western blot analysis of extracts of 293T cells, using GNRH2 antibody.

Please check the [product details page](#) for more images. Overall 5 images are available for ABIN6141259.