

Datasheet for ABIN6141269
anti-GOLM1 antibody (AA 112-401)



[Go to Product page](#)

4 Images

Overview

Quantity:	100 µL
Target:	GOLM1
Binding Specificity:	AA 112-401
Reactivity:	Human
Host:	Rabbit
Clonality:	Polyclonal
Conjugate:	This GOLM1 antibody is un-conjugated
Application:	Western Blotting (WB), Immunohistochemistry (IHC), Immunofluorescence (IF)

Product Details

Immunogen:	Recombinant fusion protein containing a sequence corresponding to amino acids 112-401 of human GOLPH2 (NP_057632.2).
Sequence:	TGERLIRVLQ DQLKTLQRNY GRLQQDVLQF QKNQTNLERK FSYDLSQCIN QMKEVKEQCE ERIEIVTKKG NEAVASRDLS ENNDQRQQLQ ALSEPQPRQLQ AAGLPHTVEVP QGKGNVLGNS KSQTPAPSSE VVLDSCRQVE KEETNEIQVW NEEPQRDRLP QEPGREQVVE DRPVGGRGFG GAGELGQTPQ VQAALSVSQE NPEMEGPERD QLVIPDGQEE EQEAAGEGRN QQKLRGEDDY NMDENEAESE TDKQAALAGN DRNIDVFNVE DQKRDTINLL DQREKRNHTL
Isotype:	IgG
Cross-Reactivity:	Human, Mouse, Rat
Characteristics:	Polyclonal Antibodies
Purification:	Affinity purification

Target Details

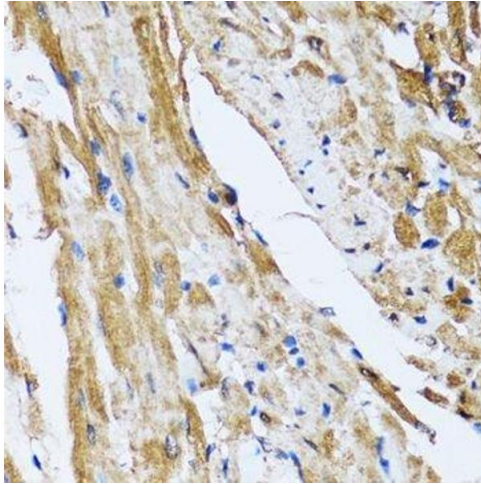
Target:	GOLM1
Alternative Name:	GOLM1 (GOLM1 Products)
Background:	<p>The Golgi complex plays a key role in the sorting and modification of proteins exported from the endoplasmic reticulum. The protein encoded by this gene is a type II Golgi transmembrane protein. It processes proteins synthesized in the rough endoplasmic reticulum and assists in the transport of protein cargo through the Golgi apparatus. The expression of this gene has been observed to be upregulated in response to viral infection. Alternatively spliced transcript variants encoding the same protein have been described for this gene.,GOLM1,C9orf155,GOLPH2,GP73,HEL46,PSEC0257,bA379P1.3,Signal Transduction,GOLM1</p>
Molecular Weight:	44 kDa/45 kDa
Gene ID:	51280
UniProt:	Q8NBJ4

Application Details

Application Notes:	WB,1:500 - 1:2000,IHC,1:50 - 1:200,IF,1:20 - 1:50
Comment:	HIGH QUALITY
Restrictions:	For Research Use only

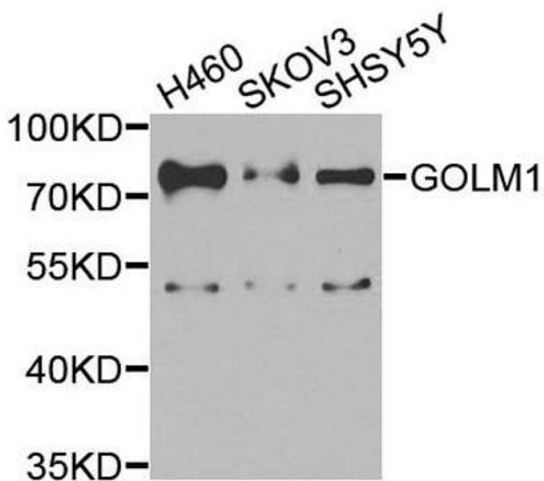
Handling

Format:	Liquid
Buffer:	PBS with 0.02 % sodium azide,50 % glycerol, pH 7.3.
Preservative:	Sodium azide
Precaution of Use:	This product contains Sodium azide: a POISONOUS AND HAZARDOUS SUBSTANCE which should be handled by trained staff only.
Storage:	-20 °C
Storage Comment:	Store at -20°C. Avoid freeze / thaw cycles.



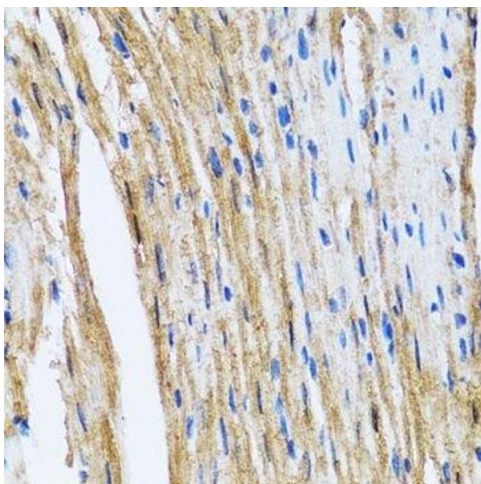
Immunohistochemistry (Paraffin-embedded Sections)

Image 1. Immunohistochemistry of paraffin-embedded rat heart using GOLM1 antibody.



Western Blotting

Image 2. Western blot analysis of extracts of various cell lines, using GOLM1 antibody.



Immunohistochemistry (Paraffin-embedded Sections)

Image 3. Immunohistochemistry of paraffin-embedded mouse heart using GOLM1 antibody.

Please check the [product details page](#) for more images. Overall 4 images are available for ABIN6141269.