



[Go to Product page](#)

Datasheet for ABIN6141293
anti-CD42a antibody (AA 17-147)

2 Images

Overview

Quantity:	100 µL
Target:	CD42a (GP9)
Binding Specificity:	AA 17-147
Reactivity:	Human
Host:	Rabbit
Clonality:	Polyclonal
Conjugate:	This CD42a antibody is un-conjugated
Application:	Western Blotting (WB), Immunohistochemistry (IHC)

Product Details

Immunogen:	Recombinant fusion protein containing a sequence corresponding to amino acids 17-147 of human GP9 (NP_000165.1).
Sequence:	TKDCPSPCTC RALETMGLWV DCRGHGLTAL PALPARTRHL LLANNSLQSV PPGAFDHLPPQ LQTLDVTQNP WHCDCSLTYL RLWLEDRTPE ALLQVRCASP SLAAHGPLGR LTGYQLGSCG WQLQASWVRP G
Isotype:	IgG
Cross-Reactivity:	Human, Mouse, Rat
Characteristics:	Polyclonal Antibodies
Purification:	Affinity purification

Target Details

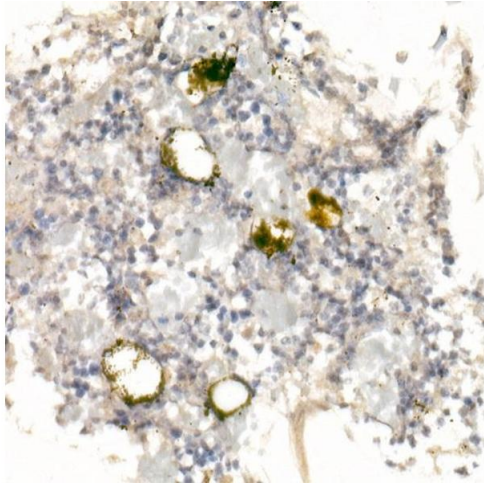
Target:	CD42a (GP9)
Alternative Name:	GP9 (GP9 Products)
Background:	<p>This gene encodes a small membrane glycoprotein found on the surface of human platelets. It forms a 1-to-1 noncovalent complex with glycoprotein Ib, a platelet surface membrane glycoprotein complex that functions as a receptor for von Willebrand factor. The complete receptor complex includes noncovalent association of the alpha and beta subunits with the protein encoded by this gene and platelet glycoprotein V. Defects in this gene are a cause of Bernard-Soulier syndrome, also known as giant platelet disease. These patients have unusually large platelets and have a clinical bleeding tendency.,GP9,CD42a,GPIX,Immunology & Inflammation,CD markers,GP9</p>
Molecular Weight:	19 kDa
Gene ID:	2815
UniProt:	P14770

Application Details

Application Notes:	WB,1:500 - 1:2000,IHC,1:50 - 1:200
Restrictions:	For Research Use only

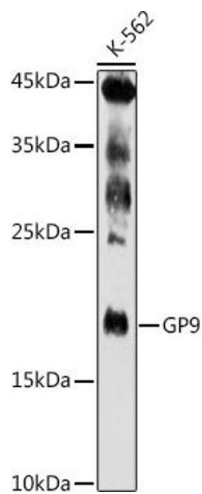
Handling

Format:	Liquid
Buffer:	PBS with 0.02 % sodium azide,50 % glycerol, pH 7.3.
Preservative:	Sodium azide
Precaution of Use:	This product contains Sodium azide: a POISONOUS AND HAZARDOUS SUBSTANCE which should be handled by trained staff only.
Storage:	-20 °C
Storage Comment:	Store at -20°C. Avoid freeze / thaw cycles.



Immunohistochemistry

Image 1. Immunohistochemistry of paraffin-embedded rat bone marrow using GP9 Rabbit pAb (ABIN6127598, ABIN6141293, ABIN6141294 and ABIN6221019) at dilution of 1:25 (40x lens). Perform high pressure antigen retrieval with 10 mM citrate buffer pH 6.0 before commencing with IHC staining protocol.



Western Blotting

Image 2. Western blot analysis of extracts of K-562 cells, using GP9 antibody (ABIN6127598, ABIN6141293, ABIN6141294 and ABIN6221019) at 1:500 dilution. Secondary antibody: HRP Goat Anti-Rabbit IgG (H+L) (ABIN1684268 and ABIN3020597) at 1:10000 dilution. Lysates/proteins: 25 µg per lane. Blocking buffer: 3 % nonfat dry milk in TBST. Detection: ECL Enhanced Kit (RM00021). Exposure time: 180s.