



Datasheet for ABIN6141330  
**anti-GPIHBP1 antibody (AA 50-151)**



[Go to Product page](#)

1 Image

Overview

Quantity:	100 µL
Target:	GPIHBP1
Binding Specificity:	AA 50-151
Reactivity:	Human
Host:	Rabbit
Clonality:	Polyclonal
Conjugate:	This GPIHBP1 antibody is un-conjugated
Application:	Western Blotting (WB)

Product Details

Immunogen:	Recombinant fusion protein containing a sequence corresponding to amino acids 50-151 of human GPIHBP1 (NP_835466.2).
Sequence:	ETNRLPGGRS RVLLRCYTCK SLPRDERCNL TQNC SHGQTC TTLIAHGNT E SGLLTTHSTW CTDSCQPITK TVEGTQVTMT CCQSSLCNVP PWQSSRVQDP TG
Isotype:	IgG
Cross-Reactivity:	Human
Characteristics:	Polyclonal Antibodies
Purification:	Affinity purification

## Target Details

---

Target:	GPIHBP1
Alternative Name:	GPIHBP1 ( <a href="#">GPIHBP1 Products</a> )
Background:	<p>This gene encodes a capillary endothelial cell protein that facilitates the lipolytic processing of triglyceride-rich lipoproteins. The encoded protein is a glycosylphosphatidylinositol-anchored protein that is a member of the lymphocyte antigen 6 (Ly6) family. This protein plays a major role in transporting lipoprotein lipase (LPL) from the subendothelial spaces to the capillary lumen. Mutations in this gene are the cause of hyperlipoproteinemia, type 1D. Alternate splicing results in multiple transcript variants.,GPIHBP1,GPI-HBP1,HYPL1D,Signal Transduction,Endocrine &amp; Metabolism,Lipid Metabolism,Lipases,Cardiovascular,Lipids,Lipoproteins/Apolipoproteins,GPIHBP1</p>
Molecular Weight:	19 kDa
Gene ID:	338328
UniProt:	<a href="#">Q8IV16</a>

## Application Details

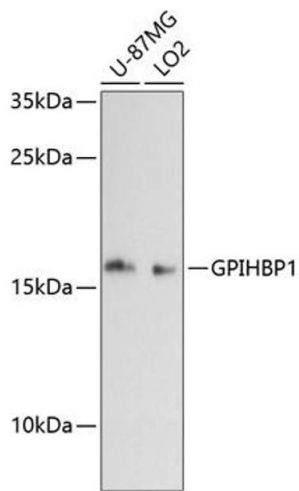
---

Application Notes:	WB,1:500 - 1:2000
Restrictions:	For Research Use only

## Handling

---

Format:	Liquid
Buffer:	PBS with 0.02 % sodium azide,50 % glycerol, pH 7.3.
Preservative:	Sodium azide
Precaution of Use:	This product contains Sodium azide: a POISONOUS AND HAZARDOUS SUBSTANCE which should be handled by trained staff only.
Storage:	-20 °C
Storage Comment:	Store at -20°C. Avoid freeze / thaw cycles.



### Western Blotting

**Image 1.** Western blot analysis of extracts of various cell lines, using GPIHBP1 antibody (ABIN6131315, ABIN6141330, ABIN6141331 and ABIN6217167) at 1:3000 dilution. Secondary antibody: HRP Goat Anti-Rabbit IgG (H+L) (ABIN1684268 and ABIN3020597) at 1:10000 dilution. Lysates/proteins: 25 µg per lane. Blocking buffer: 3 % nonfat dry milk in TBST. Detection: ECL Basic Kit (RM00020). Exposure time: 90s.