

Datasheet for ABIN6141365
anti-GPSM2 antibody (AA 380-490)[Go to Product page](#)

1 Image

Overview

Quantity:	100 µL
Target:	GPSM2
Binding Specificity:	AA 380-490
Reactivity:	Human
Host:	Rabbit
Clonality:	Polyclonal
Conjugate:	This GPSM2 antibody is un-conjugated
Application:	Western Blotting (WB)

Product Details

Immunogen:	Recombinant fusion protein containing a sequence corresponding to amino acids 380-490 of human GPSM2 (NP_037428.3).
Sequence:	STNNSIMSEN TEIDSSLNGV RPKLGRRHSM ENMELMKLTP EKVQNWNSEI LAKQKPLIAK PSAKLLFVNR LKGKKYKTNS STKVLQDASN SIDHRIPNSQ RKISADTIGD E
Isotype:	IgG
Cross-Reactivity:	Human, Mouse
Characteristics:	Polyclonal Antibodies
Purification:	Affinity purification

Target Details

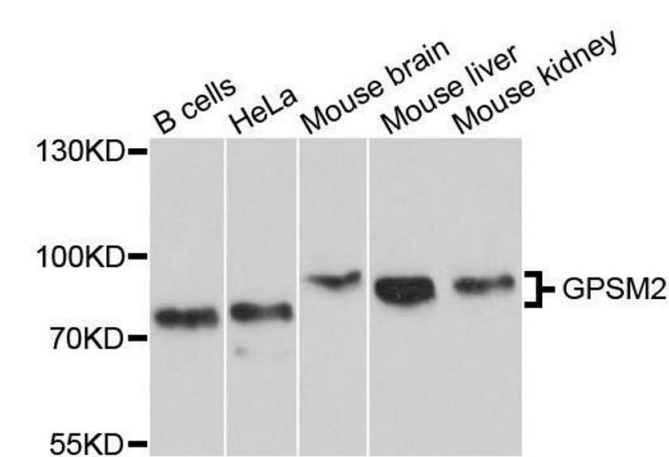
Target:	GPSM2
Alternative Name:	GPSM2 (GPSM2 Products)
Background:	<p>The protein encoded by this gene belongs to a family of proteins that modulate activation of G proteins, which transduce extracellular signals received by cell surface receptors into integrated cellular responses. The N-terminal half of this protein contains 10 copies of leu-gly-asn (LGN) repeat, and the C-terminal half contains 4 GoLoco motifs, which are involved in guanine nucleotide exchange. This protein may play a role in neuroblast division and in the development of normal hearing. Mutations in this gene are associated with autosomal recessive nonsyndromic deafness (DFNB82). Alternative splicing results in multiple transcript variants.,GPSM2,CMCS,DFNB82,LGN,PINS,Signal Transduction,G protein signaling,Cell Biology & Developmental Biology,Cell Cycle,GPSM2</p>
Molecular Weight:	76 kDa
Gene ID:	29899
UniProt:	P81274
Pathways:	Regulation of G-Protein Coupled Receptor Protein Signaling

Application Details

Application Notes:	WB,1:1000 - 1:2000
Comment:	HIGH QUALITY
Restrictions:	For Research Use only

Handling

Format:	Liquid
Buffer:	PBS with 0.02 % sodium azide,50 % glycerol, pH 7.3.
Preservative:	Sodium azide
Precaution of Use:	This product contains Sodium azide: a POISONOUS AND HAZARDOUS SUBSTANCE which should be handled by trained staff only.
Storage:	-20 °C
Storage Comment:	Store at -20°C. Avoid freeze / thaw cycles.



Western Blotting

Image 1. Western blot analysis of extracts of various cell lines, using GPSM2 antibody.