

Datasheet for ABIN6141382
anti-GREM1 antibody (AA 44-143)[Go to Product page](#)

1 Image

Overview

Quantity:	100 µL
Target:	GREM1
Binding Specificity:	AA 44-143
Reactivity:	Human
Host:	Rabbit
Clonality:	Polyclonal
Conjugate:	This GREM1 antibody is un-conjugated
Application:	Western Blotting (WB)

Product Details

Immunogen:	Recombinant fusion protein containing a sequence corresponding to amino acids 44-143 of human GREM1 (NP_001178252.1).
Sequence:	ERKYLKRDWC KTQPLKQTIH EEGNSRTII NRFCYGQCNS FYIPRHIRKE EGSFQSCSFC KPKKFTTMMV TLNCPQLQPP TKKKRVTRVK QCRCISIDLD
Isotype:	IgG
Cross-Reactivity:	Human
Characteristics:	Polyclonal Antibodies
Purification:	Affinity purification

Target Details

Target:	GREM1
Alternative Name:	GREM1 (GREM1 Products)
Background:	<p>This gene encodes a member of the BMP (bone morphogenic protein) antagonist family. Like BMPs, BMP antagonists contain cystine knots and typically form homo- and heterodimers. The CAN (cerberus and dan) subfamily of BMP antagonists, to which this gene belongs, is characterized by a C-terminal cystine knot with an eight-membered ring. The antagonistic effect of the secreted glycosylated protein encoded by this gene is likely due to its direct binding to BMP proteins. As an antagonist of BMP, this gene may play a role in regulating organogenesis, body patterning, and tissue differentiation. In mouse, this protein has been shown to relay the sonic hedgehog (SHH) signal from the polarizing region to the apical ectodermal ridge during limb bud outgrowth. Alternatively spliced transcript variants encoding different isoforms have been found for this gene.,GREM1,C15DUPq,CKTSF1B1,CRAC1,CRCS4,DAND2,DRM,DUP15q,GREMLIN,HMPS,HMPS1,IHG-2,MPSH,PIG2,gremlin-1,Signal Transduction,Cell Biology & Developmental Biology,Cytoskeleton,Extracellular Matrix,Bone,Immunology & Inflammation,Cytokines,Stem Cells,Embryonic Stem Cells,GREM1</p>
Molecular Weight:	16 kDa/20 kDa
Gene ID:	26585
UniProt:	O60565
Pathways:	Regulation of Muscle Cell Differentiation , Tube Formation , Maintenance of Protein Location

Application Details

Application Notes:	WB,1:500 - 1:2000
Comment:	HIGH QUALITY
Restrictions:	For Research Use only

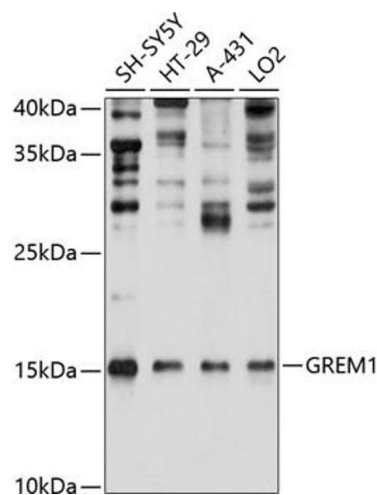
Handling

Format:	Liquid
Buffer:	PBS with 0.02 % sodium azide,50 % glycerol, pH 7.3.
Preservative:	Sodium azide
Precaution of Use:	This product contains Sodium azide: a POISONOUS AND HAZARDOUS SUBSTANCE which should be handled by trained staff only.

Handling

Storage:	-20 °C
Storage Comment:	Store at -20°C. Avoid freeze / thaw cycles.

Images



Western Blotting

Image 1. Western blot analysis of extracts of various cell lines, using GREM1 Antibody (ABIN6127963, ABIN6141382, ABIN6141383 and ABIN6215282) at 1:1000 dilution. Secondary antibody: HRP Goat Anti-Rabbit IgG (H+L) (ABIN1684268 and ABIN3020597) at 1:10000 dilution. Lysates/proteins: 25 µg per lane. Blocking buffer: 3 % nonfat dry milk in TBST. Detection: ECL Basic Kit (RM00020). Exposure time: 20s.