



[Go to Product page](#)

Datasheet for ABIN6141400

## anti-GRIN1/NMDAR1 antibody (AA 600-700)

4 Images

1 Publication

### Overview

Quantity:	100 µL
Target:	GRIN1/NMDAR1 (GRIN1)
Binding Specificity:	AA 600-700
Reactivity:	Human
Host:	Rabbit
Clonality:	Polyclonal
Conjugate:	This GRIN1/NMDAR1 antibody is un-conjugated
Application:	Western Blotting (WB), Immunohistochemistry (IHC), Immunofluorescence (IF)

### Product Details

Immunogen:	A synthetic peptide corresponding to a sequence within amino acids 600-700 of human NMDAR1 (NP_015566.1).
Sequence:	ALTLSSAMWF SWGVLLNSGI GEGAPRSFSA RILGMVWAGF AMIIVASYTA NLA AFLVLDR PEERITGIND PRLRNPSDKF IYATVKQSSV DIYFRRQVEL S
Isotype:	IgG
Cross-Reactivity:	Human, Mouse, Rat
Characteristics:	Polyclonal Antibodies
Purification:	Affinity purification

## Target Details

---

Target:	GRIN1/NMDAR1 (GRIN1)
Alternative Name:	GRIN1 ( <a href="#">GRIN1 Products</a> )
Background:	<p>The protein encoded by this gene is a critical subunit of N-methyl-D-aspartate receptors, members of the glutamate receptor channel superfamily which are heteromeric protein complexes with multiple subunits arranged to form a ligand-gated ion channel. These subunits play a key role in the plasticity of synapses, which is believed to underlie memory and learning. Cell-specific factors are thought to control expression of different isoforms, possibly contributing to the functional diversity of the subunits. Alternatively spliced transcript variants have been described.,GRIN1,GluN1,MRD8,NMD-R1,NMDA1,NMDAR1,NR1,NMDA1,Neuroscience,Neurodegenerative Diseases,Amyloid Plaque and Neurofibrillary Tangle Formation in Alzheimer's Disease,Dopamine Signaling in Parkinson's Disease,GRIN1</p>
Molecular Weight:	99-107 kDa
Gene ID:	2902
UniProt:	<a href="#">Q05586</a>
Pathways:	<a href="#">Synaptic Membrane</a> , <a href="#">Feeding Behaviour</a> , <a href="#">Regulation of long-term Neuronal Synaptic Plasticity</a>

## Application Details

---

Application Notes:	WB,1:500 - 1:2000,IHC,1:50 - 1:200,IF,1:50 - 1:200
Restrictions:	For Research Use only

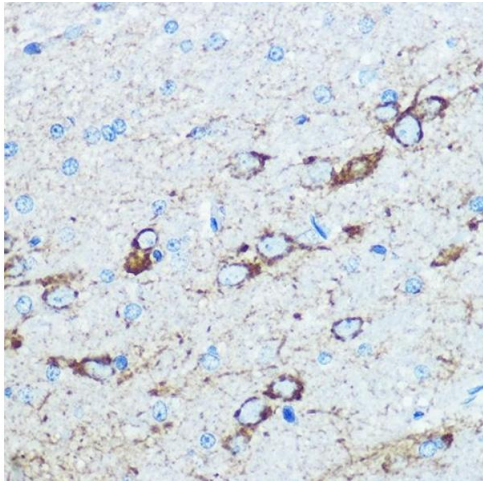
## Handling

---

Format:	Liquid
Buffer:	PBS with 0.02 % sodium azide,50 % glycerol, pH 7.3.
Preservative:	Sodium azide
Precaution of Use:	This product contains Sodium azide: a POISONOUS AND HAZARDOUS SUBSTANCE which should be handled by trained staff only.
Storage:	-20 °C
Storage Comment:	Store at -20°C. Avoid freeze / thaw cycles.

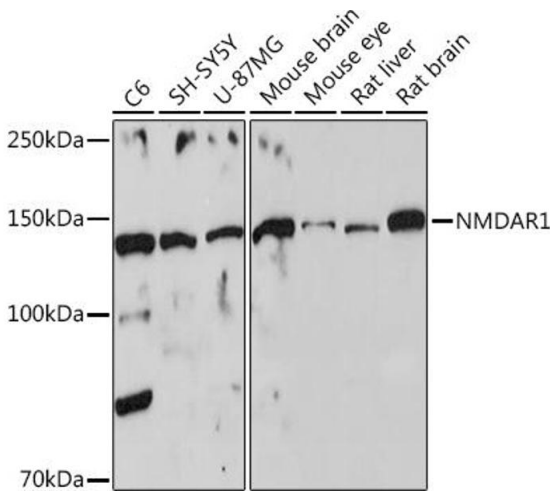
Product cited in: Li, Chen, Xu, Liu, Li, Liu, Wang, Sun, Sheng, Kong: "Alamandine attenuates sepsis-associated cardiac dysfunction via inhibiting MAPKs signaling pathways." in: **Life sciences**, Vol. 206, pp. 106-116, (2018) ([PubMed](#)).

Images



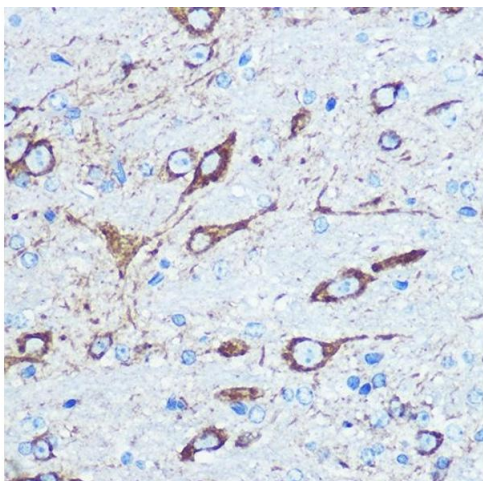
**Immunohistochemistry**

**Image 1.** Immunohistochemistry of paraffin-embedded rat brain using NMD Rabbit pAb (ABIN6133733, ABIN6141400, ABIN6141403 and ABIN6223602) at dilution of 100 (40x lens). Perform microwave antigen retrieval with 10 mM PBS buffer pH 7.2 before commencing with IHC staining protocol.



**Western Blotting**

**Image 2.** Western blot analysis of extracts of various cell lines, using NMD Rabbit pAb (ABIN6133733, ABIN6141400, ABIN6141403 and ABIN6223602) at 1:500 dilution. Secondary antibody: HRP Goat Anti-Rabbit IgG (H+L) (ABIN1684268 and ABIN3020597) at 1:10000 dilution. Lysates/proteins: 25 µg per lane. Blocking buffer: 3 % nonfat dry milk in TBST. Detection: ECL Basic Kit (RM00020). Exposure time: 10s.



**Immunohistochemistry**

**Image 3.** Immunohistochemistry of paraffin-embedded mouse brain using NMD Rabbit pAb (ABIN6133733, ABIN6141400, ABIN6141403 and ABIN6223602) at dilution of 100 (40x lens). Perform microwave antigen retrieval with 10 mM PBS buffer pH 7.2 before commencing with IHC staining protocol.

## Images

---

Please check the [product details page](#) for more images. Overall 4 images are available for ABIN6141400.