

Datasheet for ABIN6141502  
**anti-GTF2H2C antibody (AA 1-300)**



[Go to Product page](#)

3 Images

## Overview

Quantity:	100 µL
Target:	GTF2H2C
Binding Specificity:	AA 1-300
Reactivity:	Human
Host:	Rabbit
Clonality:	Polyclonal
Conjugate:	This GTF2H2C antibody is un-conjugated
Application:	Western Blotting (WB), Immunohistochemistry (IHC), Immunofluorescence (IF)

## Product Details

Immunogen:	Recombinant fusion protein containing a sequence corresponding to amino acids 1-300 of human GTF2H2C (NP_001092198.1).
Sequence:	MDEEPERTKR WEGGYERTWE ILKEDESGSL KATIEDILFK AKRKRVEHH GQVRLGMMRH LYVVVDGSRT MEDQDLKPNR LTCTLKLELY FVEEYFDQNP ISQIGIIVTK SKRAEKLETEL SGNPRKHITS LKEAVDMTCH GEPSLYNSLS MAMQTLKHMP GHTSREVLII FSSLTTC DPS NIYDLIKTLK AAKIRVSVIG LSAEVRVCTV LARETGGTYH VILDESHYKE LLTHHLSPPP ASSSSECSLI RMGFPQHTIA SLSDQDAKPS FSM AHLDGNT EPGLTLGGYF CPQCRAKYCE
Isotype:	IgG
Cross-Reactivity:	Human, Rat
Characteristics:	Polyclonal Antibodies
Purification:	Affinity purification

## Target Details

---

Target:	GTF2H2C
Alternative Name:	GTF2H2C ( <a href="#">GTF2H2C Products</a> )
Background:	Component of the core-TFIIH basal transcription factor involved in nucleotide excision repair (NER of DNA and, when complexed to CAK, in RNA transcription by RNA polymerase II.,GTF2H2C,GTF2H2C_2,Epigenetics & Nuclear Signaling,DNA Damage & Repair,GTF2H2C
Molecular Weight:	44 kDa
Gene ID:	728340
UniProt:	<a href="#">Q6P1K8</a>

## Application Details

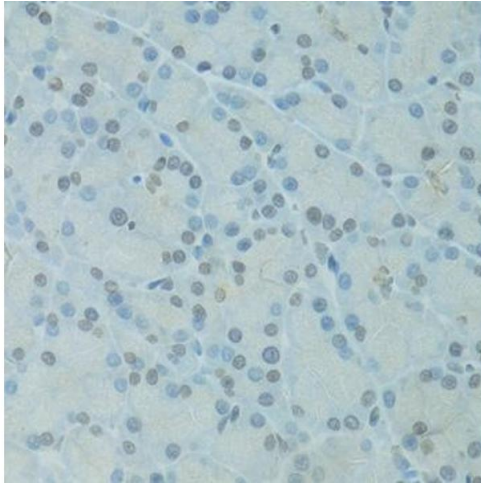
---

Application Notes:	WB,1:200 - 1:2000,IHC,1:50 - 1:200,IF,1:50 - 1:200
Restrictions:	For Research Use only

## Handling

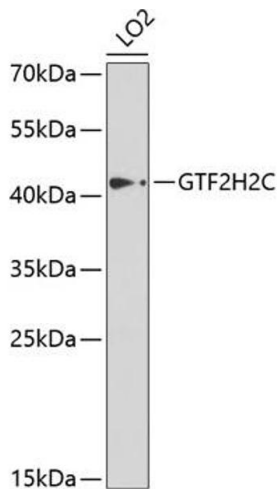
---

Format:	Liquid
Buffer:	PBS with 0.02 % sodium azide,50 % glycerol, pH 7.3.
Preservative:	Sodium azide
Precaution of Use:	This product contains Sodium azide: a POISONOUS AND HAZARDOUS SUBSTANCE which should be handled by trained staff only.
Storage:	-20 °C
Storage Comment:	Store at -20°C. Avoid freeze / thaw cycles.



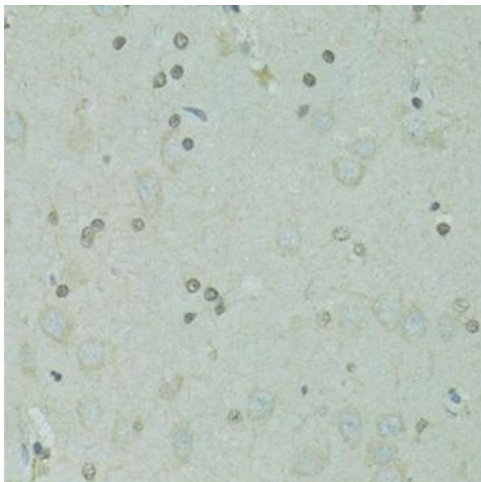
### Immunohistochemistry

**Image 1.** Immunohistochemistry of paraffin-embedded rat pancreas using GTF2H2C antibody at dilution of 1:100 (40x lens). Perform microwave antigen retrieval with 10 mM PBS buffer pH 7.2 before commencing with IHC staining protocol.



### Western Blotting

**Image 2.** Western blot analysis of extracts of LO2 cells, using GTF2H2C antibody at 1:1000 dilution. Secondary antibody: HRP Goat Anti-Rabbit IgG (H+L) (ABIN1684268 and ABIN3020597) at 1:10000 dilution. Lysates/proteins: 25 µg per lane. Blocking buffer: 3% nonfat dry milk in TBST. Detection: ECL Enhanced Kit (RM00021). Exposure time: 5s.



### Immunohistochemistry

**Image 3.** Immunohistochemistry of paraffin-embedded rat brain using GTF2H2C antibody at dilution of 1:100 (40x lens). Perform microwave antigen retrieval with 10 mM PBS buffer pH 7.2 before commencing with IHC staining protocol.