



[Go to Product page](#)

Datasheet for ABIN6141508  
**anti-GTF2H4 antibody (AA 1-300)**

1 Image

Overview

Quantity:	100 µL
Target:	GTF2H4
Binding Specificity:	AA 1-300
Reactivity:	Human
Host:	Rabbit
Clonality:	Polyclonal
Conjugate:	This GTF2H4 antibody is un-conjugated
Application:	Western Blotting (WB)

Product Details

Immunogen:	Recombinant fusion protein containing a sequence corresponding to amino acids 1-300 of human GTF2H4 (NP_001508.1).
Sequence:	MESTPSRGLN RVHLQCRNLQ EFLGGLSPGV LDRLYGHPAT CLAVFRELP S LAKNWVMRML FLEQLPQAA VALWVKKEFS KAQEESTGLL SGLRIWHTQL LPGGLQLLIL NPIFRQNLRI ALLGGGKAWS DDTSQLGPKD HARDVPSLDK YAEERWEVVL HFMVGSPPSAA VSQDLAQLLS QAGLMKSTEP GEPPCITSAG FQFLLLDTPA QLWYFMLQYL QTAQSRGMDL VEILSFLFQL SFSTLGKDYS VEGMSDSSLN FLQHLREFGL VFQRKRKSRR YYPTRLAINL SSGVSGAGGT
Isotype:	IgG
Cross-Reactivity:	Human, Mouse
Characteristics:	Polyclonal Antibodies
Purification:	Affinity purification

## Target Details

---

Target:	GTF2H4
Alternative Name:	GTF2H4 ( <a href="#">GTF2H4 Products</a> )
Background:	Component of the general transcription and DNA repair factor IIH (TFIIH core complex, which is involved in general and transcription-coupled nucleotide excision repair (NER of damaged DNA and, when complexed to CAK, in RNA transcription by RNA polymerase II. In NER, TFIIH acts by opening DNA around the lesion to allow the excision of the damaged oligonucleotide and its replacement by a new DNA fragment. In transcription, TFIIH has an essential role in transcription initiation. When the pre-initiation complex (PIC has been established, TFIIH is required for promoter opening and promoter escape. Phosphorylation of the C-terminal tail (CTD of the largest subunit of RNA polymerase II by the kinase module CAK controls the initiation of transcription.,GTF2H4,P52,TFB2,TFIIH,Epigenetics & Nuclear Signaling,DNA Damage & Repair,GTF2H4
Molecular Weight:	24 kDa/52 kDa
Gene ID:	2968
UniProt:	<a href="#">Q92759</a>
Pathways:	<a href="#">DNA Damage Repair</a>

## Application Details

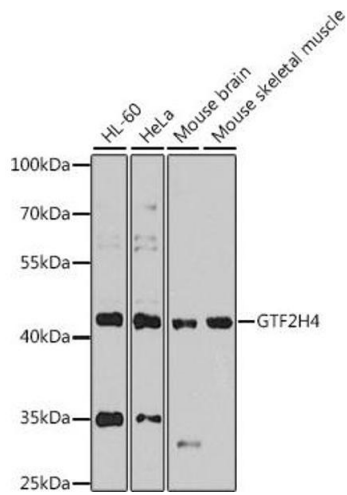
---

Application Notes:	WB,1:500 - 1:2000
Comment:	HIGH QUALITY
Restrictions:	For Research Use only

## Handling

---

Format:	Liquid
Buffer:	PBS with 0.02 % sodium azide,50 % glycerol, pH 7.3.
Preservative:	Sodium azide
Precaution of Use:	This product contains Sodium azide: a POISONOUS AND HAZARDOUS SUBSTANCE which should be handled by trained staff only.
Storage:	-20 °C
Storage Comment:	Store at -20°C. Avoid freeze / thaw cycles.



### Western Blotting

**Image 1.** Western blot analysis of extracts of various cell lines, using GTF2H4 antibody at 1:1000 dilution. Secondary antibody: HRP Goat Anti-Rabbit IgG (H+L) (ABIN1684268 and ABIN3020597) at 1:10000 dilution. Lysates/proteins: 25 µg per lane. Blocking buffer: 3% nonfat dry milk in TBST. Detection: ECL Enhanced Kit (RM00021). Exposure time: 30s.