



[Go to Product page](#)

Datasheet for ABIN6141529
anti-GUCA2A antibody (AA 22-115)

1 Image

Overview

Quantity:	100 µL
Target:	GUCA2A
Binding Specificity:	AA 22-115
Reactivity:	Human
Host:	Rabbit
Clonality:	Polyclonal
Conjugate:	This GUCA2A antibody is un-conjugated
Application:	Western Blotting (WB)

Product Details

Immunogen:	Recombinant fusion protein containing a sequence corresponding to amino acids 22-115 of human GUCA2A (NP_291031.2).
Sequence:	VTVQDGNFSF SLESVKKLD LQEPQEPRVG KLRNFAPIPG EPVVPILCSN PNFPEELKPL CKEPNAQEIL QRLEEIAEDP GTCEICAYAA CTGC
Isotype:	IgG
Cross-Reactivity:	Human, Mouse, Rat
Characteristics:	Polyclonal Antibodies
Purification:	Affinity purification

Target Details

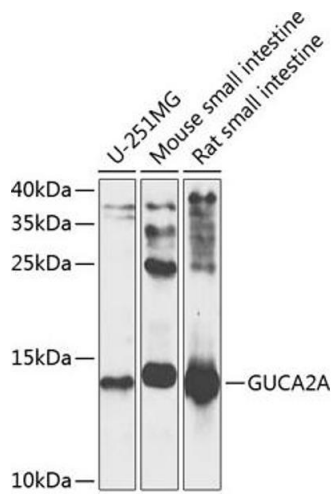
Target:	GUCA2A
Alternative Name:	GUCA2A (GUCA2A Products)
Background:	Endogenous activator of intestinal guanylate cyclase. It stimulates this enzyme through the same receptor binding region as the heat-stable enterotoxins.,GUCA2A,GCAP-I,GUCA2,STARA,guanylin,Signal Transduction,Cell Biology & Developmental Biology,Growth factor,Neuroscience,Calcium Signaling,GUCA2A
Molecular Weight:	12 kDa
Gene ID:	2980
UniProt:	Q02747

Application Details

Application Notes:	WB,1:500 - 1:2000
Comment:	HIGH QUALITY
Restrictions:	For Research Use only

Handling

Format:	Liquid
Buffer:	PBS with 0.02 % sodium azide,50 % glycerol, pH 7.3.
Preservative:	Sodium azide
Precaution of Use:	This product contains Sodium azide: a POISONOUS AND HAZARDOUS SUBSTANCE which should be handled by trained staff only.
Storage:	-20 °C
Storage Comment:	Store at -20°C. Avoid freeze / thaw cycles.



Western Blotting

Image 1. Western blot analysis of extracts of various cell lines, using GUCA antibody (ABIN6127993, ABIN6141529, ABIN6141530 and ABIN6225126) at 1:1000 dilution. Secondary antibody: HRP Goat Anti-Rabbit IgG (H+L) (ABIN1684268 and ABIN3020597) at 1:10000 dilution. Lysates/proteins: 25 µg per lane. Blocking buffer: 3 % nonfat dry milk in TBST. Detection: ECL Enhanced Kit (RM00021). Exposure time: 5s.