

Datasheet for ABIN6141545
anti-Glycogenin 1 antibody (AA 234-333)[Go to Product page](#)

1 Image

Overview

| | |
|----------------------|---|
| Quantity: | 100 µL |
| Target: | Glycogenin 1 (GYG1) |
| Binding Specificity: | AA 234-333 |
| Reactivity: | Human |
| Host: | Rabbit |
| Clonality: | Polyclonal |
| Conjugate: | This Glycogenin 1 antibody is un-conjugated |
| Application: | Western Blotting (WB) |

Product Details

| | |
|-------------------|---|
| Immunogen: | Recombinant fusion protein containing a sequence corresponding to amino acids 234-333 of human GYG1 (NP_001171649.1). |
| Sequence: | EAHDPNMTHP EFLILWWNIF TTNVLPLLQQ FGLVKDTC SY VNVEDVSGAI SHLSLGEIPA MAQPFVSSEE RKERWEQGQA DYMGADSFDN IKRKLD TYLQ |
| Isotype: | IgG |
| Cross-Reactivity: | Human, Mouse, Rat |
| Characteristics: | Polyclonal Antibodies |
| Purification: | Affinity purification |

Target Details

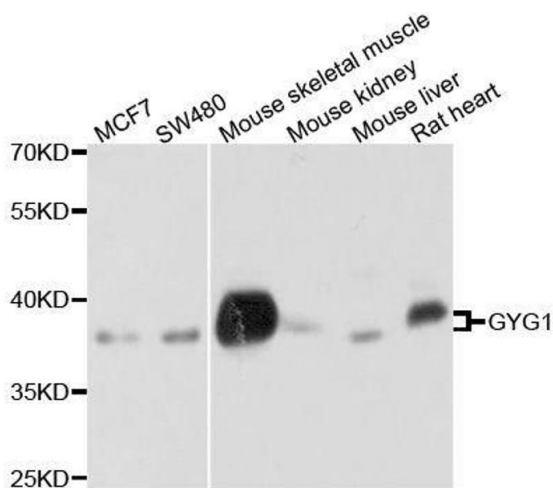
| | |
|-------------------|---|
| Target: | Glycogenin 1 (GYG1) |
| Alternative Name: | GYG1 (GYG1 Products) |
| Background: | <p>This gene encodes a member of the glycogenin family. Glycogenin is a glycosyltransferase that catalyzes the formation of a short glucose polymer from uridine diphosphate glucose in an autoglucosylation reaction. This reaction is followed by elongation and branching of the polymer, catalyzed by glycogen synthase and branching enzyme, to form glycogen. This gene is expressed in muscle and other tissues. Mutations in this gene result in glycogen storage disease XV. This gene has pseudogenes on chromosomes 1, 8 and 13 respectively.</p> <p>Alternatively spliced transcript variants encoding different isoforms have been identified.,GYG1,GSD15,GYG,Cancer,Signal Transduction,Endocrine & Metabolism,Carbohydrate metabolism,GYG1</p> |
| Molecular Weight: | 31 kDa/37 kDa/39 kDa |
| Gene ID: | 2992 |
| UniProt: | P46976 |
| Pathways: | Cellular Glucan Metabolic Process |

Application Details

| | |
|--------------------|-----------------------|
| Application Notes: | WB,1:200 - 1:2000 |
| Comment: | HIGH QUALITY |
| Restrictions: | For Research Use only |

Handling

| | |
|--------------------|--|
| Format: | Liquid |
| Buffer: | PBS with 0.02 % sodium azide,50 % glycerol, pH 7.3. |
| Preservative: | Sodium azide |
| Precaution of Use: | This product contains Sodium azide: a POISONOUS AND HAZARDOUS SUBSTANCE which should be handled by trained staff only. |
| Storage: | -20 °C |
| Storage Comment: | Store at -20°C. Avoid freeze / thaw cycles. |



Western Blotting

Image 1. Western blot analysis of extracts of various cell lines, using GYG1 antibody.