



[Go to Product page](#)

Datasheet for ABIN6141551  
**anti-GZMA antibody (AA 29-262)**

2 Images

Overview

Quantity:	100 µL
Target:	GZMA
Binding Specificity:	AA 29-262
Reactivity:	Human
Host:	Rabbit
Clonality:	Polyclonal
Conjugate:	This GZMA antibody is un-conjugated
Application:	Western Blotting (WB), Immunofluorescence (IF)

Product Details

Immunogen:	Recombinant fusion protein containing a sequence corresponding to amino acids 29-262 of human GZMA (NP_006135.1).
Sequence:	IIGGNEVTPH SRPYMVLLSL DRKTICAGAL IAKDWVLTAA HCNLNKRSQV ILGAHSITRE EPTKQIMLVK KEFPYPCYDP ATREGDLKLL QLTEKAKINK YVTILHLPKK GDDVKPGTMC QVAGWGRTHN SASWSDLRE VNITIDRKV CNDRNHYNFN PVIGMNMVCA GSLRGGRDSC NGDSGSPLLC EGVFRGVTSF GLENKCGDPR GPGVYILLSK KHLNWIIMTI KGAV
Isotype:	IgG
Cross-Reactivity:	Human, Mouse, Rat
Characteristics:	Polyclonal Antibodies
Purification:	Affinity purification

## Target Details

---

Target:	GZMA
Alternative Name:	GZMA ( <a href="#">GZMA Products</a> )
Background:	Cytolytic T lymphocytes (CTL) and natural killer (NK) cells share the remarkable ability to recognize, bind, and lyse specific target cells. They are thought to protect their host by lysing cells bearing on their surface 'nonself' antigens, usually peptides or proteins resulting from infection by intracellular pathogens. The protein described here is a T cell- and natural killer cell-specific serine protease that may function as a common component necessary for lysis of target cells by cytotoxic T lymphocytes and natural killer cells.,GZMA,CTLA3,HFSP,Cell Biology & Developmental Biology,Apoptosis,Immunology & Inflammation,Cell Intrinsic Innate Immunity Signaling Pathway,GZMA
Molecular Weight:	27 kDa/28 kDa
Gene ID:	3001
UniProt:	<a href="#">P12544</a>
Pathways:	<a href="#">Apoptosis</a>

## Application Details

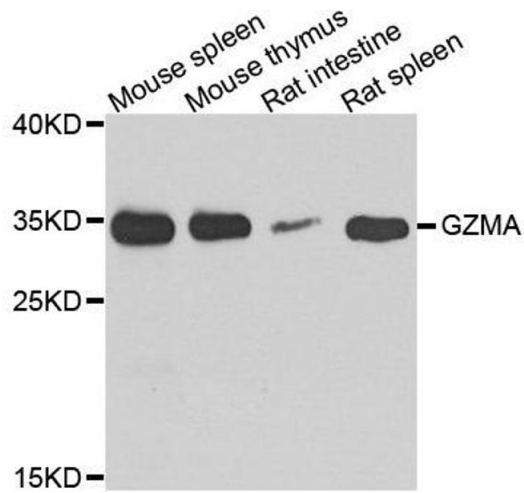
---

Application Notes:	WB,1:500 - 1:2000,IF,1:50 - 1:200
Comment:	HIGH QUALITY
Restrictions:	For Research Use only

## Handling

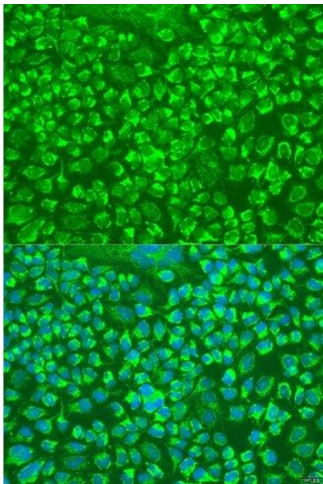
---

Format:	Liquid
Buffer:	PBS with 0.02 % sodium azide,50 % glycerol, pH 7.3.
Preservative:	Sodium azide
Precaution of Use:	This product contains Sodium azide: a POISONOUS AND HAZARDOUS SUBSTANCE which should be handled by trained staff only.
Storage:	-20 °C
Storage Comment:	Store at -20°C. Avoid freeze / thaw cycles.



### Western Blotting

**Image 1.** Western blot analysis of extracts of various cell lines, using GZMA antibody.



### Immunofluorescence

**Image 2.** Immunofluorescence analysis of U2OS cells using GZMA antibody.