



[Go to Product page](#)

Datasheet for ABIN6141559
anti-PROCR antibody (AA 19-209)

3 Images

Overview

Quantity:	100 µL
Target:	PROCR
Binding Specificity:	AA 19-209
Reactivity:	Human
Host:	Rabbit
Clonality:	Polyclonal
Conjugate:	This PROCR antibody is un-conjugated
Application:	Western Blotting (WB), Immunohistochemistry (IHC)

Product Details

Immunogen:	Recombinant fusion protein containing a sequence corresponding to amino acids 19-209 of human PROCR (NP_006395.2).
Sequence:	QDASDGLQRL HMLQISYFRD PYHVWYQGNA SLGGHLTHVL EGPDTNTTII QLQPLQEPES WARTQSGLQS YLLQFHGLVR LVHQERTLAF PLTIRCFLGC ELPPEGSRAH VFFEVAVNGS SFVSRPERA LWQADTQVTS GVVFTLQQL NAYNRTRYEL REFLEDTCVQ YVQKHISAEN TKGSQTSRSY T
Isotype:	IgG
Cross-Reactivity:	Human, Mouse, Rat
Characteristics:	Polyclonal Antibodies

Target Details

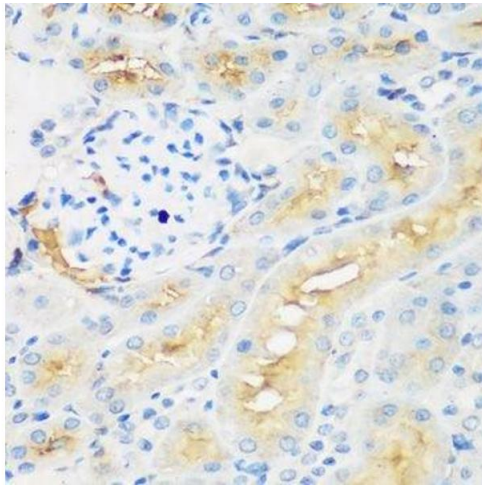
Target:	PROCR
Alternative Name:	PROCR (PROCR Products)
Background:	<p>The protein encoded by this gene is a receptor for activated protein C, a serine protease activated by and involved in the blood coagulation pathway. The encoded protein is an N-glycosylated type I membrane protein that enhances the activation of protein C. Mutations in this gene have been associated with venous thromboembolism and myocardial infarction, as well as with late fetal loss during pregnancy. The encoded protein may also play a role in malarial infection and has been associated with cancer.,PROCR,CCCA,CCD41,EPCR,h-PROCR,Immunology & Inflammation,CD markers,Stem Cells,Hematopoietic Progenitors,Cardiovascular,Blood,Coagulation,PROCR</p>
Molecular Weight:	26 kDa
Gene ID:	10544
UniProt:	Q9UNN8

Application Details

Application Notes:	WB,1:500 - 1:2000,IHC,1:50 - 1:200
Restrictions:	For Research Use only

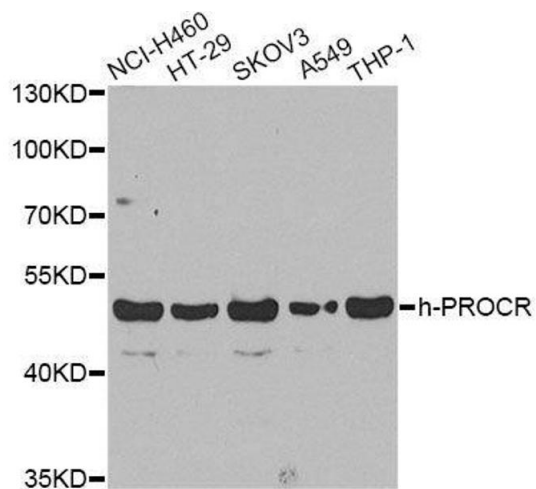
Handling

Format:	Liquid
Buffer:	PBS with 0.02 % sodium azide,50 % glycerol, pH 7.3.
Preservative:	Sodium azide
Precaution of Use:	This product contains Sodium azide: a POISONOUS AND HAZARDOUS SUBSTANCE which should be handled by trained staff only.
Storage:	-20 °C
Storage Comment:	Store at -20°C. Avoid freeze / thaw cycles.



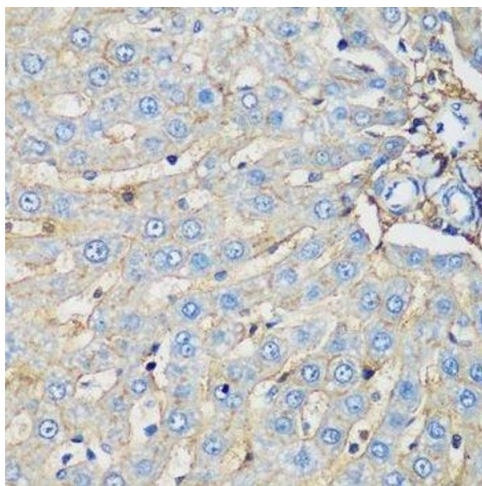
Immunohistochemistry (Paraffin-embedded Sections)

Image 1. Immunohistochemistry of paraffin-embedded rat kidney using PROCR antibody.



Western Blotting

Image 2. Western blot analysis of extracts of various cell lines, using PROCR antibody.



Immunohistochemistry (Paraffin-embedded Sections)

Image 3. Immunohistochemistry of paraffin-embedded rat liver using PROCR antibody.