



[Go to Product page](#)

Datasheet for ABIN6141619  
**anti-HAT1 antibody (AA 245-419)**

3 Images

Overview

Quantity:	100 µL
Target:	HAT1
Binding Specificity:	AA 245-419
Reactivity:	Human
Host:	Rabbit
Clonality:	Polyclonal
Conjugate:	This HAT1 antibody is un-conjugated
Application:	Western Blotting (WB), Immunofluorescence (IF), Chromatin Immunoprecipitation (ChIP)

Product Details

Immunogen:	Recombinant fusion protein containing a sequence corresponding to amino acids 245-419 of human KAT1/KAT1/HAT1 (NP_003633.1).
Sequence:	TPFQGQGHGA QLLETVHRY YTEFPTVLDIT AEDPSKSYVK LRDFVLVKLC QDLPCFSREK LMQGFNEDMA IEAQQKFKIN KQHARRVYEI LRLLVTDMSD AEQYRSYRLD IKRRLISPYK KKQRDLAKMR KCLRPEELTN QMNQIEISMQ HEQLEESFQE LVEDYRRVIE RLAQE
Isotype:	IgG
Cross-Reactivity:	Human, Mouse, Rat
Characteristics:	Polyclonal Antibodies
Purification:	Affinity purification

## Target Details

---

Target:	HAT1
Alternative Name:	HAT1 ( <a href="#">HAT1 Products</a> )
Background:	<p>The protein encoded by this gene is a type B histone acetyltransferase (HAT) that is involved in the rapid acetylation of newly synthesized cytoplasmic histones, which are in turn imported into the nucleus for de novo deposition onto nascent DNA chains. Histone acetylation, particularly of histone H4, plays an important role in replication-dependent chromatin assembly.</p> <p>Specifically, this HAT can acetylate soluble but not nucleosomal histone H4 at lysines 5 and 12, and to a lesser degree, histone H2A at lysine 5. Alternatively spliced transcript variants have been identified for this gene.,HAT1,KAT1,Epigenetics &amp; Nuclear Signaling,Chromatin Modifying Enzymes,Acetylation,Cell Biology &amp; Developmental Biology,Notch Signaling Pathway,HAT1</p>
Molecular Weight:	39 kDa/49 kDa
Gene ID:	8520
UniProt:	<a href="#">O14929</a>

## Application Details

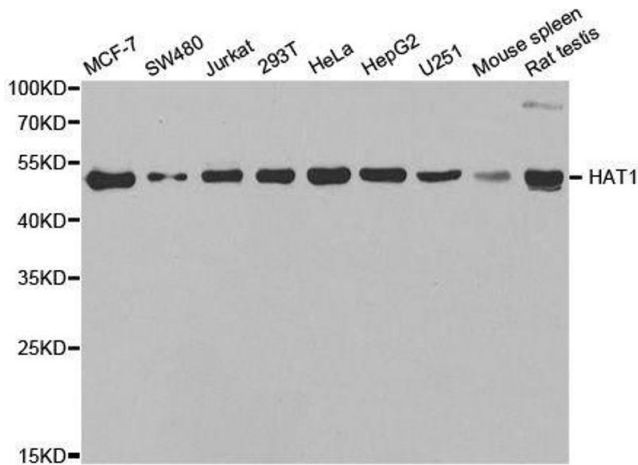
---

Application Notes:	WB,1:500 - 1:2000,IF,1:50 - 1:200,ChIP,1:50 - 1:200
Comment:	HIGH QUALITY
Restrictions:	For Research Use only

## Handling

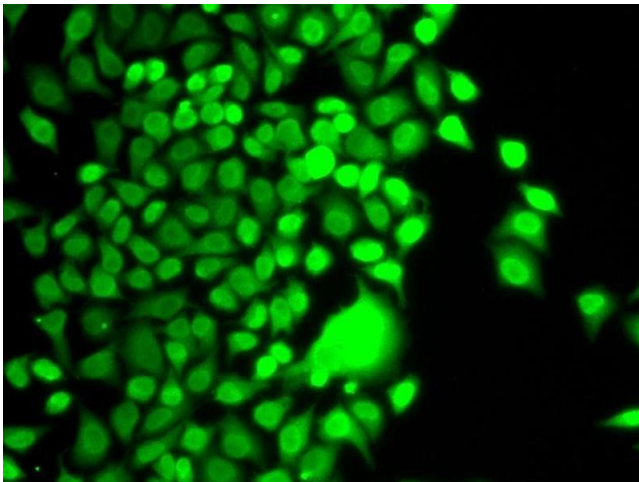
---

Format:	Liquid
Buffer:	PBS with 0.02 % sodium azide,50 % glycerol, pH 7.3.
Preservative:	Sodium azide
Precaution of Use:	This product contains Sodium azide: a POISONOUS AND HAZARDOUS SUBSTANCE which should be handled by trained staff only.
Storage:	-20 °C
Storage Comment:	Store at -20°C. Avoid freeze / thaw cycles.



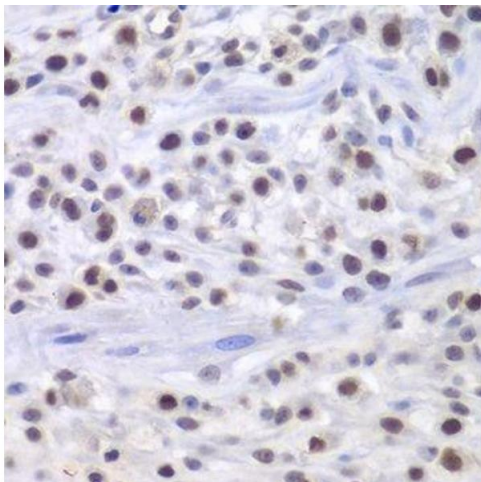
### Western Blotting

**Image 1.** Western blot analysis of extracts of various cell lines, using HAT1 antibody.



### Immunofluorescence

**Image 2.** Immunofluorescence analysis of U2OS cells using HAT1 antibody.



### Immunohistochemistry (Paraffin-embedded Sections)

**Image 3.** Immunohistochemistry of paraffin-embedded mouse osteosarcoma using HAT1 antibody.