



[Go to Product page](#)

Datasheet for ABIN6141626

## anti-TIM3 antibody (AA 1-100)

### 2 Images

#### Overview

Quantity:	100 µL
Target:	TIM3 (TIM 3)
Binding Specificity:	AA 1-100
Reactivity:	Human
Host:	Rabbit
Clonality:	Polyclonal
Conjugate:	This TIM3 antibody is un-conjugated
Application:	Western Blotting (WB), Immunofluorescence (IF)

#### Product Details

Immunogen:	A synthetic peptide corresponding to a sequence within amino acids 1-100 of human TIM-3/HAVCR2 (NP_116171.3).
Sequence:	MFSHLPFDCV LLLLLLLLTR SSEVEYRAEV GQNAYLPCFY TPAAPGNLVP VCWKGKACPV FECGNVVLRD DERDVNYWTS RYWLNGDFRK GDVSLTIENV
Isotype:	IgG
Cross-Reactivity:	Human, Mouse
Characteristics:	Polyclonal Antibodies
Purification:	Affinity purification

## Target Details

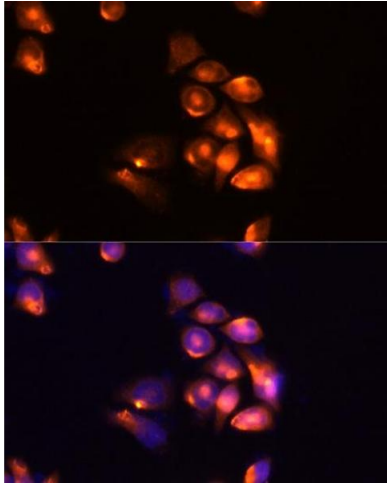
Target:	TIM3 (TIM 3)
Alternative Name:	HAVCR2 ( <a href="#">TIM 3 Products</a> )
Target Type:	Virus
Background:	<p>The protein encoded by this gene belongs to the immunoglobulin superfamily, and TIM family of proteins. CD4-positive T helper lymphocytes can be divided into types 1 (Th1) and 2 (Th2) on the basis of their cytokine secretion patterns. Th1 cells are involved in cell-mediated immunity to intracellular pathogens and delayed-type hypersensitivity reactions, whereas, Th2 cells are involved in the control of extracellular helminthic infections and the promotion of atopic and allergic diseases. This protein is a Th1-specific cell surface protein that regulates macrophage activation, and inhibits Th1-mediated auto- and alloimmune responses, and promotes immunological tolerance.,HAVCR2,CD366,HAVcr-2,KIM-3,TIM3,TIMD-3,TIMD3,Tim-3,Immunology &amp; Inflammation,Cell Intrinsic Innate Immunity Signaling Pathway,HAVCR2</p>
Molecular Weight:	85 kDa/100 kDa/105 kDa/106 kDa
Gene ID:	84868
UniProt:	<a href="#">Q8TDQ0</a>
Pathways:	<a href="#">Regulation of Lipid Metabolism by PPARalpha</a> , <a href="#">Cancer Immune Checkpoints</a>

## Application Details

Application Notes:	WB,1:500 - 1:2000,IF,1:50 - 1:200
Restrictions:	For Research Use only

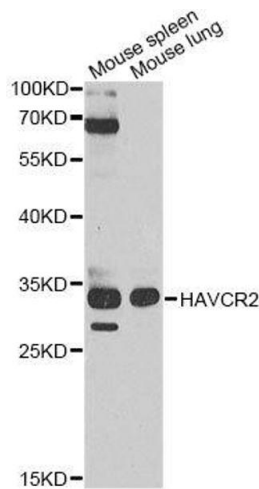
## Handling

Format:	Liquid
Buffer:	PBS with 0.02 % sodium azide,50 % glycerol, pH 7.3.
Preservative:	Sodium azide
Precaution of Use:	This product contains Sodium azide: a POISONOUS AND HAZARDOUS SUBSTANCE which should be handled by trained staff only.
Storage:	-20 °C
Storage Comment:	Store at -20°C. Avoid freeze / thaw cycles.



### Immunofluorescence

**Image 1.** Immunofluorescence analysis of HeLa cells using TIM-3/H antibody (ABIN6134185, ABIN6141626, ABIN6141630 and ABIN6217441) at dilution of 1:100 (40x lens). Blue: DAPI for nuclear staining.



### Western Blotting

**Image 2.** Western blot analysis of extracts of various cell lines, using HAVCR2 antibody.