

Datasheet for ABIN6141637
anti-HBa2 antibody (AA 1-142)[Go to Product page](#)

4 Images

Overview

Quantity:	100 µL
Target:	HBa2
Binding Specificity:	AA 1-142
Reactivity:	Human
Host:	Rabbit
Clonality:	Polyclonal
Conjugate:	This HBa2 antibody is un-conjugated
Application:	Western Blotting (WB), Immunofluorescence (IF)

Product Details

Immunogen:	Recombinant fusion protein containing a sequence corresponding to amino acids 1-142 of human HBA2 (NP_000508.1).
Sequence:	MVLSPADKTN VKAAWGKVGGA HAGEYGAEAL ERMFLSFPTT KTYFPHFDLS HGSAQVKGHG KKVADALTNA VAHVDDMPNA LSALSDLHAH KLRVDPVNFK LLSHCLLVTL AAHLPAEFTP AVHASLDKFL ASVSTVLTSK YR
Isotype:	IgG
Cross-Reactivity:	Human, Mouse, Rat
Characteristics:	Polyclonal Antibodies
Purification:	Affinity purification

Target Details

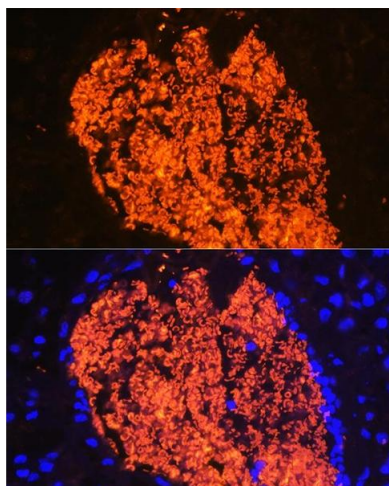
Target:	HBa2
Alternative Name:	HBA2 (HBA2 Products)
Background:	<p>The human alpha globin gene cluster located on chromosome 16 spans about 30 kb and includes seven loci: 5'- zeta - pseudozeta - mu - pseudoalpha-1 - alpha-2 - alpha-1 - theta - 3'.</p> <p>The alpha-2 (HBA2) and alpha-1 (HBA1) coding sequences are identical. These genes differ slightly over the 5' untranslated regions and the introns, but they differ significantly over the 3' untranslated regions. Two alpha chains plus two beta chains constitute HbA, which in normal adult life comprises about 97 % of the total hemoglobin, alpha chains combine with delta chains to constitute HbA-2, which with HbF (fetal hemoglobin) makes up the remaining 3 % of adult hemoglobin. Alpha thalassemias result from deletions of each of the alpha genes as well as deletions of both HBA2 and HBA1, some nondeletion alpha thalassemias have also been reported.,HBA2,HBA-T2,HBH,HBA2</p>
Molecular Weight:	15 kDa
Gene ID:	3040
UniProt:	P69905

Application Details

Application Notes:	WB,1:500 - 1:2000,IF,1:50 - 1:200
Comment:	HIGH QUALITY
Restrictions:	For Research Use only

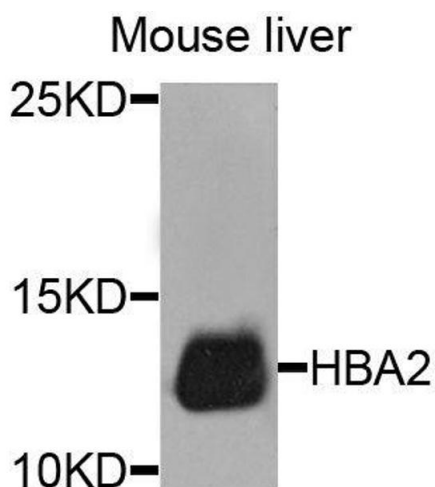
Handling

Format:	Liquid
Buffer:	PBS with 0.02 % sodium azide,50 % glycerol, pH 7.3.
Preservative:	Sodium azide
Precaution of Use:	This product contains Sodium azide: a POISONOUS AND HAZARDOUS SUBSTANCE which should be handled by trained staff only.
Storage:	-20 °C
Storage Comment:	Store at -20°C. Avoid freeze / thaw cycles.



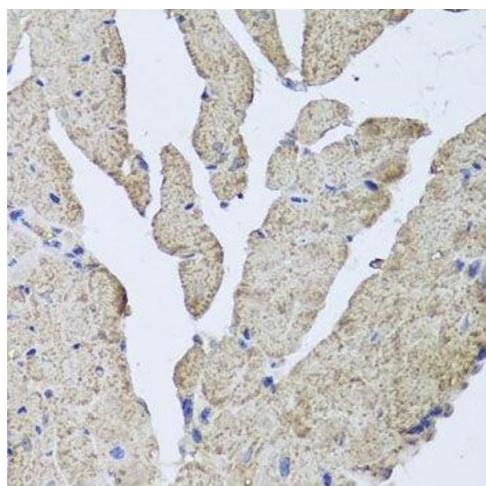
Immunofluorescence

Image 1. Immunofluorescence analysis of Mouse placenta using HB antibody (ABIN6129603, ABIN6141637, ABIN6141638 and ABIN6224486) at dilution of 1:100 (40x lens). Blue: DAPI for nuclear staining.



Western Blotting

Image 2. Western blot analysis of extracts of mouse liver, using HBA2 antibody.



Immunohistochemistry (Paraffin-embedded Sections)

Image 3. Immunohistochemistry of paraffin-embedded mouse heart using HBA2 antibody.

Please check the [product details page](#) for more images. Overall 4 images are available for ABIN6141637.