



[Go to Product page](#)

Datasheet for ABIN6141701  
**anti-HDLBP antibody (AA 1035-1268)**

5 Images

Overview

Quantity:	100 µL
Target:	HDLBP
Binding Specificity:	AA 1035-1268
Reactivity:	Human
Host:	Rabbit
Clonality:	Polyclonal
Conjugate:	This HDLBP antibody is un-conjugated
Application:	Western Blotting (WB), Immunohistochemistry (IHC), Immunofluorescence (IF)

Product Details

Immunogen:	Recombinant fusion protein containing a sequence corresponding to amino acids 1035-1268 of human HDLBP (NP_976221.1).
Sequence:	LERVKELQAE QEDRALRSFK LSVTVDPKYH PKIIGRKGAV ITQIRLEHDV NIQFPDKDDG NQPQDQITIT GYEKNTEAAR DAILRIVGEL EQMVSEDVPL DHRVHARIIG ARGKAIRKIM DEFKVDIRFP QSGAPDPNCV TVTGLPENVE EAIDHILNLE EEYLADVVDV EALQVYMKPP AHEEAKAPSR GFVVRDAPWT ASSSEKAPDM SSSEEFPSFG AQVAPKTLPW GPKR
Isotype:	IgG
Cross-Reactivity:	Human, Mouse, Rat
Characteristics:	Polyclonal Antibodies
Purification:	Affinity purification

## Target Details

---

Target:	HDLBP
Alternative Name:	HDLBP ( <a href="#">HDLBP Products</a> )
Background:	The protein encoded by this gene binds high density lipoprotein (HDL) and may function to regulate excess cholesterol levels in cells. The encoded protein also binds RNA and can induce heterochromatin formation.,HDLBP,HBP,PRO2900,VGL,vigilin,Epigenetics & Nuclear Signaling,RNA Binding,Cancer,Signal Transduction,Endocrine & Metabolism,Lipid Metabolism,Cholesterol Metabolism,Cardiovascular,Heart,Lipids,Cardiovascular diseases,Heart disease,HDLBP
Molecular Weight:	137 kDa/141 kDa
Gene ID:	3069
UniProt:	<a href="#">Q00341</a>

## Application Details

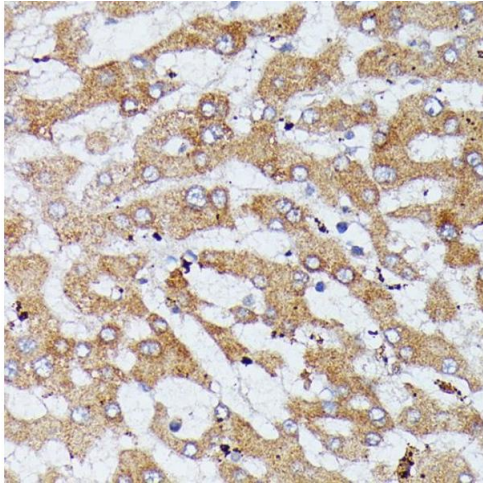
---

Application Notes:	WB,1:500 - 1:2000,IHC,1:50 - 1:100,IF,1:50 - 1:100
Restrictions:	For Research Use only

## Handling

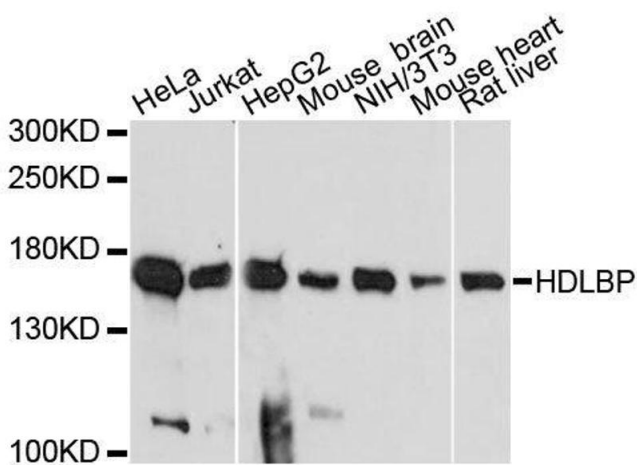
---

Format:	Liquid
Buffer:	PBS with 0.02 % sodium azide,50 % glycerol, pH 7.3.
Preservative:	Sodium azide
Precaution of Use:	This product contains Sodium azide: a POISONOUS AND HAZARDOUS SUBSTANCE which should be handled by trained staff only.
Storage:	-20 °C
Storage Comment:	Store at -20°C. Avoid freeze / thaw cycles.



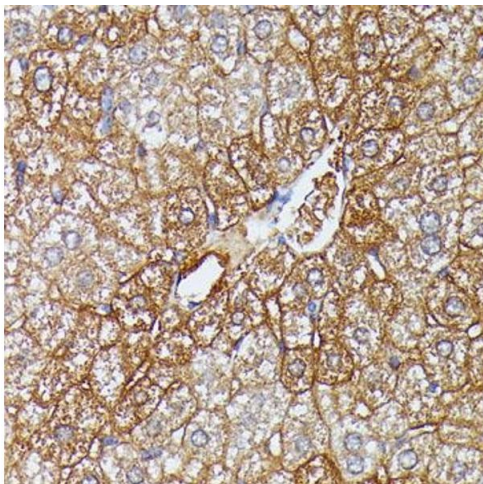
### Immunohistochemistry

**Image 1.** Immunohistochemistry of paraffin-embedded human liver using HDLBP antibody (ABIN6128051, ABIN6141701, ABIN6141702 and ABIN6221672) at dilution of 1:100 (40x lens). Perform microwave antigen retrieval with 10 mM PBS buffer pH 7.2 before commencing with IHC staining protocol.



### Western Blotting

**Image 2.** Western blot analysis of extracts of various cell lines, using HDLBP antibody.



### Immunohistochemistry

**Image 3.** Immunohistochemistry of paraffin-embedded mouse liver using HDLBP antibody (ABIN6128051, ABIN6141701, ABIN6141702 and ABIN6221672) at dilution of 1:100 (40x lens). Perform microwave antigen retrieval with 10 mM PBS buffer pH 7.2 before commencing with IHC staining protocol.

Please check the [product details page](#) for more images. Overall 5 images are available for ABIN6141701.