

Datasheet for ABIN6141703  
**anti-HEATR1 antibody (AA 1-120)**



[Go to Product page](#)

1 Image

## Overview

Quantity:	100 µL
Target:	HEATR1
Binding Specificity:	AA 1-120
Reactivity:	Human
Host:	Rabbit
Clonality:	Polyclonal
Conjugate:	This HEATR1 antibody is un-conjugated
Application:	Western Blotting (WB)

## Product Details

Immunogen:	Recombinant fusion protein containing a sequence corresponding to amino acids 1-120 of human HEATR1 (NP_060542.4).
Sequence:	MTSLAQLLQR LALPQSDASL LSRDEVASLL FDPKEAATID RDTAFAIGCT GLEELLGIDP SFEQFEAPLF SQLAKTLERS VQTKAVNKQL DENISLFLIH LSPYFLLKPA QKCLEWLIHR
Isotype:	IgG
Cross-Reactivity:	Human
Characteristics:	Polyclonal Antibodies
Purification:	Affinity purification

## Target Details

---

Target:	HEATR1
Alternative Name:	HEATR1 ( <a href="#">HEATR1 Products</a> )
Background:	Ribosome biogenesis factor. Involved in nucleolar processing of pre-18S ribosomal RNA. Required for optimal pre-ribosomal RNA transcription by RNA polymerase I.,HEATR1,BAP28,UTP10,Epigenetics & Nuclear Signaling,RNA Binding,HEATR1
Molecular Weight:	242 kDa
Gene ID:	55127
UniProt:	<a href="#">Q9H583</a>

## Application Details

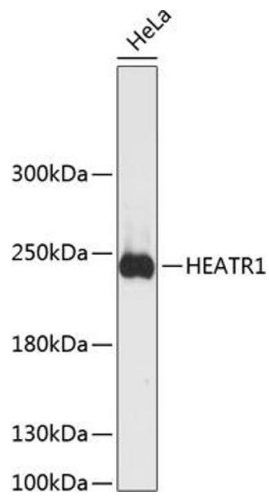
---

Application Notes:	WB,1:500 - 1:2000
Comment:	HIGH QUALITY
Restrictions:	For Research Use only

## Handling

---

Format:	Liquid
Buffer:	PBS with 0.02 % sodium azide,50 % glycerol, pH 7.3.
Preservative:	Sodium azide
Precaution of Use:	This product contains Sodium azide: a POISONOUS AND HAZARDOUS SUBSTANCE which should be handled by trained staff only.
Storage:	-20 °C
Storage Comment:	Store at -20°C. Avoid freeze / thaw cycles.



### Western Blotting

**Image 1.** Western blot analysis of extracts of HeLa cells, using HE antibody at 1:3000 dilution. Secondary antibody: HRP Goat Anti-Rabbit IgG (H+L) (ABIN1684268 and ABIN3020597) at 1:10000 dilution. Lysates/proteins: 25 µg per lane. Blocking buffer: 3% nonfat dry milk in TBST. Detection: ECL Basic Kit (RM00020). Exposure time: 90s.