



[Go to Product page](#)

Datasheet for ABIN6141716
anti-HEPACAM antibody (AA 35-245)

1 Image

Overview

Quantity:	100 µL
Target:	HEPACAM
Binding Specificity:	AA 35-245
Reactivity:	Human
Host:	Rabbit
Clonality:	Polyclonal
Conjugate:	This HEPACAM antibody is un-conjugated
Application:	Western Blotting (WB)

Product Details

Immunogen:	Recombinant fusion protein containing a sequence corresponding to amino acids 35-245 of human HEPACAM (NP_689935.2).
Sequence:	NITSPVRLIH GTVGKSALLS VQYSSTSSDR PVVKWQLKRD KPVTVVQSIG TEVIGTLRPD YRDRIRLFEN GSLLLSDLQL ADEGTYEVEI SITDDTFTGE KTINLTVDVP ISRPQVLVAS TTVLELSEAF TLNCSHENG T KPSYTWLKD G KPLLNDSRML LSPDQKVLTI TRVLMEDDDL YSCMVENPIS QGRSLPVKIT VYRRSSLYII L
Isotype:	IgG
Cross-Reactivity:	Human, Mouse, Rat
Characteristics:	Polyclonal Antibodies
Purification:	Affinity purification

Target Details

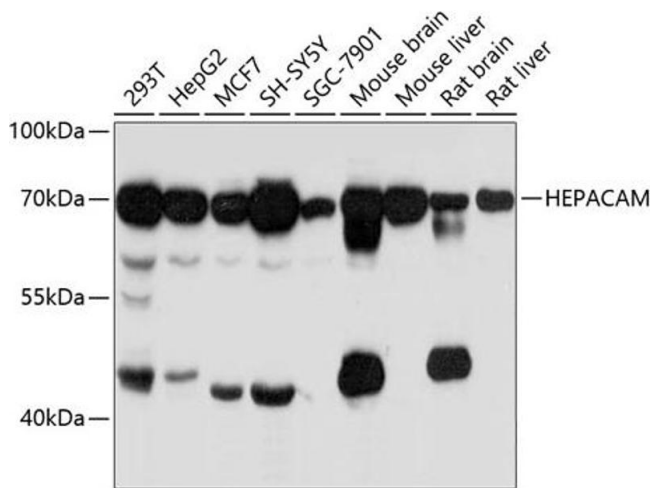
Target:	HEPACAM
Alternative Name:	HEPACAM (HEPACAM Products)
Background:	The protein encoded by this gene is a single-pass type I membrane protein that localizes to the cytoplasmic side of the cell membrane. The encoded protein acts as a homodimer and is involved in cell motility and cell-matrix interactions. The expression of this gene is downregulated or undetectable in many cancer cell lines, so this may be a tumor suppressor gene.,HEPACAM,GlialCAM,MLC2A,MLC2B,Cancer,Invasion and Metastasis,Signal Transduction,Cell Biology & Developmental Biology,Cell Adhesion,Cell Adhesion Molecules,Cytoskeleton,HEPACAM
Molecular Weight:	40 kDa/46 kDa
Gene ID:	220296
UniProt:	Q14CZ8

Application Details

Application Notes:	WB,1:500 - 1:2000
Comment:	HIGH QUALITY
Restrictions:	For Research Use only

Handling

Format:	Liquid
Buffer:	PBS with 0.02 % sodium azide,50 % glycerol, pH 7.3.
Preservative:	Sodium azide
Precaution of Use:	This product contains Sodium azide: a POISONOUS AND HAZARDOUS SUBSTANCE which should be handled by trained staff only.
Storage:	-20 °C
Storage Comment:	Store at -20°C. Avoid freeze / thaw cycles.



Western Blotting

Image 1. Western blot analysis of extracts of various cell lines, using HEPACAM antibody (ABIN6132116, ABIN6141716, ABIN6141717 and ABIN6215275) at 1:3000 dilution. Secondary antibody: HRP Goat Anti-Rabbit IgG (H+L) (ABIN1684268 and ABIN3020597) at 1:10000 dilution. Lysates/proteins: 25 µg per lane. Blocking buffer: 3% nonfat dry milk in TBST. Detection: ECL Basic Kit (RM00020). Exposure time: 10s.