



[Go to Product page](#)

Datasheet for ABIN6141741  
**anti-HFM1 antibody (AA 1-240)**

3 Images

Overview

Quantity:	100 µL
Target:	HFM1
Binding Specificity:	AA 1-240
Reactivity:	Human
Host:	Rabbit
Clonality:	Polyclonal
Conjugate:	This HFM1 antibody is un-conjugated
Application:	Western Blotting (WB), Immunohistochemistry (IHC)

Product Details

Immunogen:	Recombinant fusion protein containing a sequence corresponding to amino acids 1-240 of human HFM1 (NP_001017975.4).
Sequence:	MLKSNDCFLS LENLFFEKPD EVENHPDNEK SLDWFLPPAP LISEIPDTQE LEEELESHKL LGQEKRPKML TSNLKITNED TNYISLTQKF QFAPPSDKYE QDDLNLLEGVG NNDLSHVAGK LTYASQKYKN HIGTEIAPEK SVPDDTKLVN FAEDKGESTS VFRKRLFKIS DNIHGSAYSN DNELDSHIGS VKIVQTEMNK GKSRNYSNSK QKFQYSANVF TANNAFSASE IGEGMFKAPS
Isotype:	IgG
Cross-Reactivity:	Human, Mouse, Rat
Characteristics:	Polyclonal Antibodies
Purification:	Affinity purification

## Target Details

---

Target:	HFM1
Alternative Name:	HFM1 ( <a href="#">HFM1 Products</a> )
Background:	The protein encoded by this gene is thought to be an ATP-dependent DNA helicase and is expressed mainly in germ-line cells. Defects in this gene are a cause of premature ovarian failure 9 (POF9),HFM1,MER3,POF9,SEC63D1,Si-11,Si-11-6,helicase,Epigenetics & Nuclear Signaling,Cell Biology & Developmental Biology,HFM1
Molecular Weight:	62 kDa/162 kDa
Gene ID:	164045
UniProt:	<a href="#">A2PYH4</a>

## Application Details

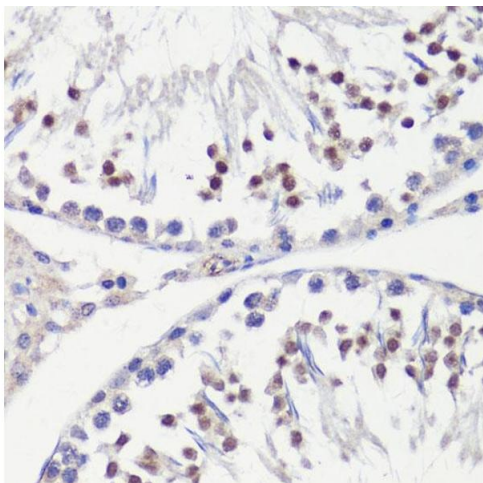
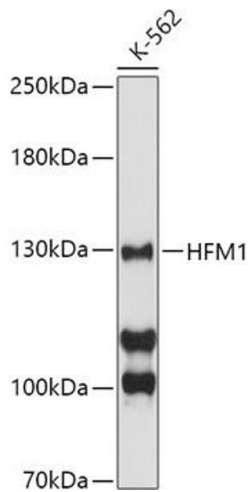
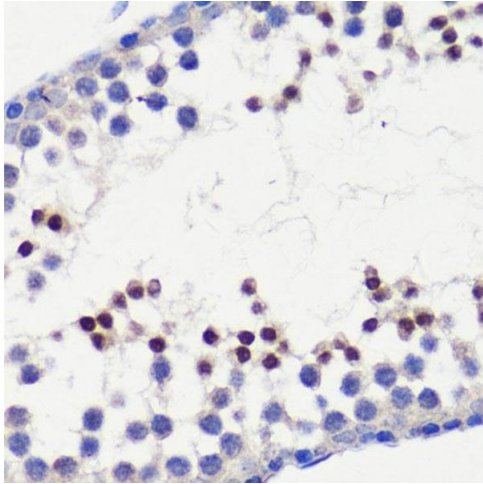
---

Application Notes:	WB,1:500 - 1:2000,IHC,1:50 - 1:100
Comment:	HIGH QUALITY
Restrictions:	For Research Use only

## Handling

---

Format:	Liquid
Buffer:	PBS with 0.02 % sodium azide,50 % glycerol, pH 7.3.
Preservative:	Sodium azide
Precaution of Use:	This product contains Sodium azide: a POISONOUS AND HAZARDOUS SUBSTANCE which should be handled by trained staff only.
Storage:	-20 °C
Storage Comment:	Store at -20°C. Avoid freeze / thaw cycles.



### Immunohistochemistry

**Image 1.** Immunohistochemistry of paraffin-embedded mouse testis using HFM1 antibody (ABIN6133318, ABIN6141741, ABIN6141743 and ABIN6224711) at dilution of 1:100 (40x lens). Perform microwave antigen retrieval with 10 mM PBS buffer pH 7.2 before commencing with IHC staining protocol.

### Western Blotting

**Image 2.** Western blot analysis of extracts of K-562 cells, using HFM1 antibody (ABIN6133318, ABIN6141741, ABIN6141743 and ABIN6224711) at 1:500 dilution. Secondary antibody: HRP Goat Anti-Rabbit IgG (H+L) (ABIN1684268 and ABIN3020597) at 1:10000 dilution. Lysates/proteins: 25 µg per lane. Blocking buffer: 3 % nonfat dry milk in TBST. Detection: ECL Basic Kit (RM00020). Exposure time: 90s.

### Immunohistochemistry

**Image 3.** Immunohistochemistry of paraffin-embedded rat testis using HFM1 antibody (ABIN6133318, ABIN6141741, ABIN6141743 and ABIN6224711) at dilution of 1:100 (40x lens). Perform microwave antigen retrieval with 10 mM PBS buffer pH 7.2 before commencing with IHC staining protocol.