



[Go to Product page](#)

Datasheet for ABIN6141752  
**anti-HIC1 antibody (AA 180-430)**

1 Image

Overview

Quantity:	100 µL
Target:	HIC1
Binding Specificity:	AA 180-430
Reactivity:	Human
Host:	Rabbit
Clonality:	Polyclonal
Conjugate:	This HIC1 antibody is un-conjugated
Application:	Western Blotting (WB)

Product Details

Immunogen:	Recombinant fusion protein containing a sequence corresponding to amino acids 180-430 of human HIC1 (NP_001091672.1).
Sequence:	AATPVIQACY PSPVGPPPPP AAEPSPGPEA AVNTHCAELY ASGPGPAAAL CASERRCSPL CGLDLSKKSP PGSAAPERPL AERELPPRPD SPPSAGPAAY KEPPLALPSL PPLPFQKLEE AAPPSPDFRG GSGSPGPEPP GRPDGPSLLY RWMKHEPGLG SYGDELGRER GSPSERCEER GGDAAVSPGG PPLGLAPPPR YPGSLDGPGA GGDGDDYKSS SEETGSSEDP SPPGGHLEGY PCPHLAYGEP E
Isotype:	IgG
Cross-Reactivity:	Mouse
Characteristics:	Polyclonal Antibodies
Purification:	Affinity purification

## Target Details

---

Target:	HIC1
Alternative Name:	HIC1 ( <a href="#">HIC1 Products</a> )
Background:	This gene functions as a growth regulatory and tumor repressor gene. Hypermethylation or deletion of the region of this gene have been associated with tumors and the contiguous-gene syndrome, Miller-Dieker syndrome. Alternative splicing of this gene results in multiple transcript variants.,HIC1,ZBTB29,ZNF901,hic-1,Epigenetics & Nuclear Signaling,Cancer,Tumor suppressors,HIC1
Molecular Weight:	74 kDa/76 kDa
Gene ID:	3090
UniProt:	<a href="#">Q14526</a>
Pathways:	<a href="#">Positive Regulation of Response to DNA Damage Stimulus</a>

## Application Details

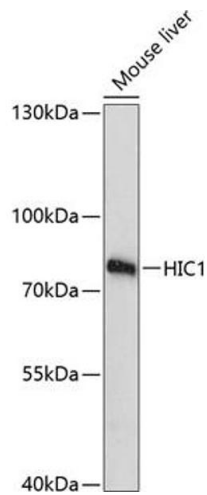
---

Application Notes:	WB,1:500 - 1:2000
Restrictions:	For Research Use only

## Handling

---

Format:	Liquid
Buffer:	PBS with 0.02 % sodium azide,50 % glycerol, pH 7.3.
Preservative:	Sodium azide
Precaution of Use:	This product contains Sodium azide: a POISONOUS AND HAZARDOUS SUBSTANCE which should be handled by trained staff only.
Storage:	-20 °C
Storage Comment:	Store at -20°C. Avoid freeze / thaw cycles.



### Western Blotting

**Image 1.** Western blot analysis of extracts of mouse liver, using HIC1 antibody (ABIN6128075, ABIN6141752, ABIN6141754 and ABIN6218077) at 1:3000 dilution. Secondary antibody: HRP Goat Anti-Rabbit IgG (H+L) (ABIN1684268 and ABIN3020597) at 1:10000 dilution. Lysates/proteins: 25  $\mu$ g per lane. Blocking buffer: 3 % nonfat dry milk in TBST. Detection: ECL Enhanced Kit (RM00021). Exposure time: 90s.