

Datasheet for ABIN6141767  
**anti-HINT1 antibody (AA 1-126)**



[Go to Product page](#)

3 Images

## Overview

Quantity:	100 µL
Target:	HINT1
Binding Specificity:	AA 1-126
Reactivity:	Human
Host:	Rabbit
Clonality:	Polyclonal
Conjugate:	This HINT1 antibody is un-conjugated
Application:	Western Blotting (WB), Immunofluorescence (IF)

## Product Details

Immunogen:	Recombinant fusion protein containing a sequence corresponding to amino acids 1-126 of human HINT1 (NP_005331.1).
Sequence:	MADEIAKAQV ARPGGDTIFG KIIKKEIPAK IIFEDDRCLA FHDISPQAPT HFLVIPKKHI SQISVAEDDD ESLLGHLMIIV GKKCAADLGL NKGYRMVVNE GSDGGQSVYH VHLHVLGGRQ MHWPPG
Isotype:	IgG
Cross-Reactivity:	Human, Mouse, Rat
Characteristics:	Polyclonal Antibodies
Purification:	Affinity purification

## Target Details

---

Target:	HINT1
Alternative Name:	HINT1 ( <a href="#">HINT1 Products</a> )
Background:	<p>This gene encodes a protein that hydrolyzes purine nucleotide phosphoramidates substrates, including AMP-morpholidate, AMP-N-alanine methyl ester, AMP-alpha-acetyl lysine methyl ester, and AMP-NH<sub>2</sub>. The encoded protein interacts with these substrates via a histidine triad motif. This gene is considered a tumor suppressor gene. In addition, mutations in this gene can cause autosomal recessive neuromyotonia and axonal neuropathy. There are several related pseudogenes on chromosome 7. Several transcript variants have been observed.,HINT1,HINT,NMAN,PKCI-1,PRKCNH1,Epigenetics &amp; Nuclear Signaling,Cancer,Tumor suppressors,HINT1</p>
Molecular Weight:	13 kDa
Gene ID:	3094
UniProt:	<a href="#">P49773</a>

## Application Details

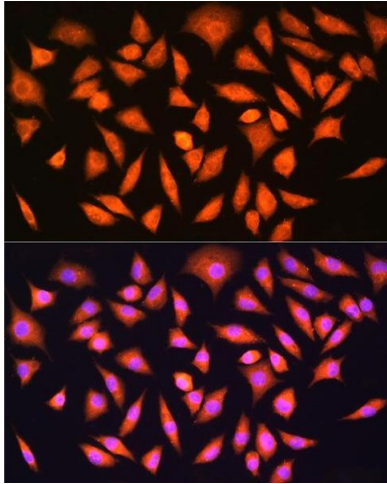
---

Application Notes:	WB,1:1000 - 1:2000,IF,1:50 - 1:200
Comment:	HIGH QUALITY
Restrictions:	For Research Use only

## Handling

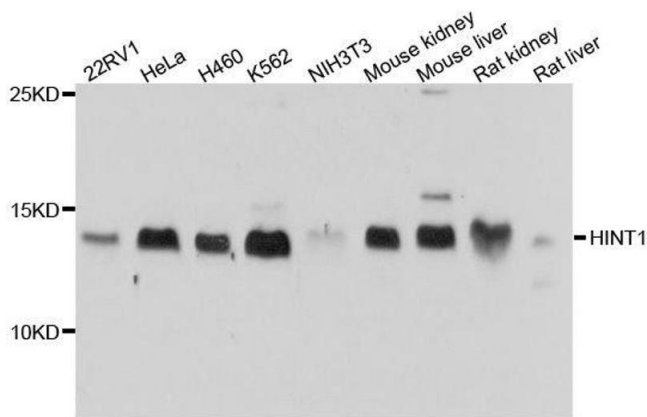
---

Format:	Liquid
Buffer:	PBS with 0.02 % sodium azide,50 % glycerol, pH 7.3.
Preservative:	Sodium azide
Precaution of Use:	This product contains Sodium azide: a POISONOUS AND HAZARDOUS SUBSTANCE which should be handled by trained staff only.
Storage:	-20 °C
Storage Comment:	Store at -20°C. Avoid freeze / thaw cycles.



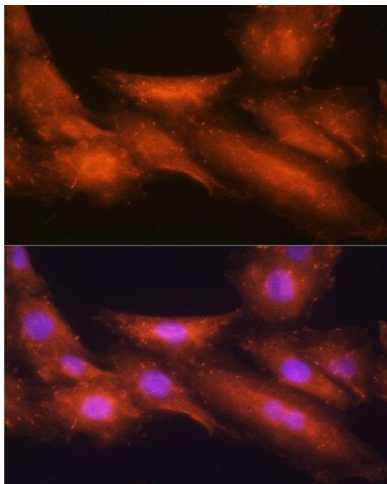
### Immunofluorescence

**Image 1.** Immunofluorescence analysis of L929 cells using [KO Validated] HINT1 Rabbit pAb at dilution of 1:100 (40x lens). Blue: DAPI for nuclear staining.



### Western Blotting

**Image 2.** Western blot analysis of extracts of various cell lines, using HINT1 antibody.



### Immunofluorescence

**Image 3.** Immunofluorescence analysis of H9C2 cells using [KO Validated] HINT1 Rabbit pAb at dilution of 1:100 (40x lens). Blue: DAPI for nuclear staining.